

introduction

Air Power, the harnessed servant of industrial progress, eliminates time waste and drudgery. Makes work handling fast, economical and automatic. If you want the most economical, adaptable and speedy impetus to all pressure, needs AIR POWER has no rival. Feeding work to machines, holding, exerting aimed and precisional pressure, lifting or handling heavy equipment, AIR POWER is your best solution.

This catalog has been designed to provide you with all the necessary information you need to select the proper AIR-MITE equipment to meet your specific requirements. Variations or special units other than those shown are available upon request.

index

	Page		
Mighty Mite Short Stroke Cylinders	3	VDB Series 2 & 3-Way Solenoid Valves	36-37
Air Arbor Presses	4-5	Connectors for VDB Series	37
Classic Design Cylinders		MV2 Series Miniature Valves	38-39
Tandem & Triplex	6-7	MV3 & MV3P Poppet Valves	40
Foot Mounted Models	8-9	Slide Valves, Quick Exhaust Valves	40
Front Flange Mounted Models	10-11	Flow Control, Needle, Check Valves	41
Rear Flange Mounted Models	12-13	PC2500 Safety Controls	42-43
Pull Models	12-13	SC3000 Safety Controls—Stand Alone	44
Clevis Mounted Models	12-13	SC3300 Safety Controls—Press Ready	45
DAR Cylinders	14-15	LV3 Series—Safety Lockout Valves	46
Micro Model Cylinders	16-17	V101 & V202 Lockout Slide Valves	46
V-Series Control Valves		Miniature Air Components	47
Valve Types & Order Information	18-19	Air Volume Chambers	47
V3 Series 3-Way Valves	20-22	Filter-Regulator-Lubricator Units	48-49
V4 & V5 Series 4-Way Valves	23-25	Vacuum Pumps	50-51
V4 & V5 Series - 3 Position Valves	26	Roto-Flo Speed Controls	52
Safety Foot Guard	27	Exhaust Silencers & Mufflers	53
V3 & V4 Pilot Valves—Standard	28	Vacuum Electric Switches	53
V3 & V4 Pilot Valves—Low Pressure	29	Air Holding Collet Fixtures	54
V3 & V4 Series—Solenoid Valves	30-31	Air Line Instant Fittings	55
S2 & S3 Series—Solenoid Valves	32-33	Power Conversion Table	Back Cover
S5 Series—Miniature Solenoid Valves	34-35	Suggested Rod End Styles—Chart	Back Cover

PRICES AND QUOTATION

Prices are subject to change without notice, but any such change shall not affect orders already accepted. Quotations are firm for 30 days only.

MINIMUM CHARGE

Minimum billing on any order is \$25.00 net.

RETURNED GOODS

No purchases are to be returned after shipment for any reason unless our written acceptance has first been obtained. All returns are subject to a 20% restocking charge. All shipping charges shall be prepaid. No goods returned after 6 months.

DESIGN

Manufacturer reserves the right to alter specifications and/or dimensions without notice. Seller assumes no responsibility for revision of models already in the field.

SPECIAL PRODUCTS

Orders for special products are not subject to cancellation. Cylinder orders are considered special, due to stroke, rod extension, thread, etc., and therefore non-cancellable.

TERMS OF PAYMENT

NET—30 Days F.O.B. Chicago, Ill.

Please see page 42 in this catalog for full information on anti tie-down controls.

MIGHTY MITE SHORT STROKE CYLINDERS



- Double Acting Cylinder
- Cylinder bores and stainless steel piston rods are specially finished for extremely low seal friction and minimum stick-slip effect.
- Buna N "O" Rings for efficient service -30°F. to 250°F.
- Stainless Steel Piston Rod

MODEL G106

MODEL G104

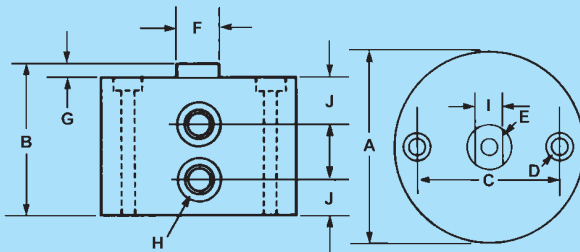


MODEL G100

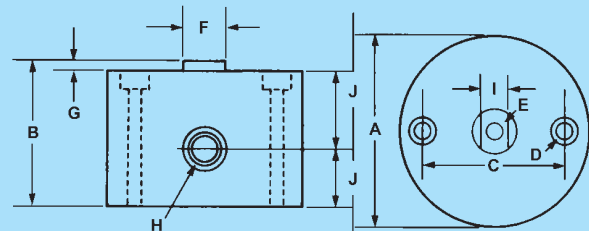
Available in 1/8", 1/4", 1/2", 3/4", 1" and 2" stroke lengths.

SPECIFICATIONS

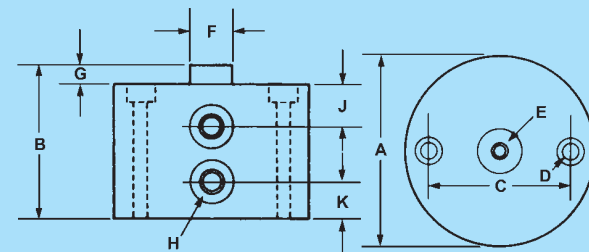
- Maximum Operating pressures:
120 p.s.i. pneumatic
400 p.s.i. hydraulic
- Mounting Screws available for all models



Models G106-107



Models G104-G105



Models G100-G101-G102-G103

HOW TO ORDER

When ordering "Mighty Mite" cylinders please specify: Model No., Bore Size, and Stroke, I.E., G100, 1/2", 1/8-1/2".

NOTE: "B" dimension in chart remains constant regardless of incremental strokes.

Model No.	Bore	Stroke	A	B	C	D	E	F	G	H	I	J	K
G100	1/2	1/8-1/2	1.125	1.218	.880	(2)#6	8-32	5/16	1/8	10-32	-	.281	.296
G101	1/2	3/4-1	1.125	1.718	.880	(2)#6	10-32	5/16	1/8	10-32		.281	.296
G102	3/4	1/8-1/2	1.50	1.218	1.187	(2)#6	10-32	5/16	1/8	10-32		.281	.296
G103	3/4	3/4-1	1.50	1.718	1.187	(2)#6	10-32	5/16	1/8	10-32		.281	.296
G104	11/8	1/8-1/2	2.00	1.313	1.687	(2)#10	5/16-24	1/2	1/8	1/8	7/16	.593	
G105	11/8	3/4-1	2.00	1.813	1.687	(2)#10	5/16-24	1/2	1/8	1/8	7/16	.593	
G106	15/8	1/4-1	2.75	2.312	2.375	(2)#10	3/8-24	5/8	1/8	1/8	1/2	.500	
G107	15/8	1-2	2.75	3.312	2.375	(2)#10	3/8-24	5/8	1/8	1/8	1/2	.500	

NOTE: G100 cylinders available with 8-32 or 10-32 internal threads - specify.

- **COMPACT** – Require 60% Less Mounting Space
- **SIMPLE, EASY TO MOUNT**
- **INTERCHANGEABLE**

Mighty Mite Short Stroke Cylinders are 65% shorter than conventional cylinders and require 60% less mounting space. Compact and rugged, they ave a low silhouette that makes them ideally suited for clamping fixtures, jig work, high speed cycling, and most any applications where tight spaces allow very limited working room.

Simple, easy to mount, the Mighty Mite cylinders have a rapid response, high clamping force relative to their small, compact external size.

Design of the units permit complete interchangeability of cylinders (dimensionally in cylinders) and parts with cylinders and/or parts of comparable makes. Changeover or replacement both in existing on-the-job installations and other application is simple and quickly accomplished.

Cylinders have an attractive blue anodized finish. Cylinder bores and stainless steel piston rods are specially finished for extremely low seal friction and minimum stick-slip effect. Special Buna N "O" Rings are used to provide efficient service from -30°F to 250°F. Optional Viton Rings are available for higher temperature applications.

AIR ARBOR PRESSES

CAPACITIES 1/4, 1/2, 3/4, 1, 2, 3 TON

Air-Mite has been manufacturing air arbor presses since 1952. Today, our complete and expanded line of production presses offers as much accuracy and precision as your tooling requires—all at an affordable price.

Cylinders have a durable, maintenance-free construction that assures uninterrupted service. Solid steel column provides greater strength and rigidity. Unlimited ram clearance is available by specifying “daylight” or work area distance required. Ram guides to prevent ram rotation are standard on the DAP38 and DAP58 models, and are offered as optional equipment for all other presses.

Air arbor presses are available as either *spring return*—with “AP” designation—or as *double acting* with “DAP” designation—models. All presses can be supplied with double rod end cylinders—with “DR” designation. Double rod end presses are especially useful for: (1) applications requiring a

greater bearing surface for vertical axis stability and (2) for “micro” adjustment of the piston rod travel on the down stroke. For these reasons, AIR-MITE strongly recommends the (DR) presses for most applications.

PRESS SELECTION—Presses are rated according to the deliverable force provided by the different models at varying psi of “in” line pressure. Air-Mite Model Nos. are the key to the deliverable force. Tandem presses—Models DAP14, 24, and 38—deliver *double* the force of other presses for the same bore and at the same “in” line pressure. Triplex presses—Model DAP58DR—deliver *triple* the force of other presses for the same bore and at the same “in” line pressure. Eg., the following 5” bore presses deliver different pounds of force at 100 psi “in” line pressure: DAP19 models deliver 1900 pounds; DAP38 models deliver 3800 pounds; DAP58DR models deliver 5800 pounds.

PRESS SELECTION

Applications

- Basic crimping, forming, pressing, stamping, broaching
- Complicated die sets, electronics, medical products

Basic Daylight (Work Area) Distance – All Models

Standard 6" clearance – from retracted rod to base platen
Additional daylight area – specify additional when ordering

Stroke & Stroke Adjustment

- Standard—as shown, Additional—as required
- DR (Double Rod) Models—top rod threaded UNF with mtg nuts provided
Lower rod threaded—additional charge

Rod End Options

- Type 1—Blank (Plain) rod end
- Type 2—Full Thread – Male UNF or UNC
- Type 3—Reduced diameter male UNF or UNC thread
- Type 4—Female UNF thread
- Type 5—Per customer requirement

* See chart on back cover

WARNING:

Whenever air arbor presses are manually operated two hand anti-tie down controls must be used. Presses are sold under conditions that all OSHA regulations be met by users.

Standard Rod Extension

Model 150 - 1"
Models 225, 300, 400, 500 - 1.5"
Models 550, 580 - 2"
Longer extensions available

Ram Guides—standard on DAP38, DAP38DR & DAP58DR models—for applications requiring non-rotating rod during press cycling.

- Type A – Yoke design attaching rod to OD of press column – standard guide
- Type B – Keywayed into steel or chromed column

Operating Pressures

Minimum Pressures—25-30 psi,
Maximum Pressure—120 psi

Safety Controls

Controls specifically designed for all presses—two hand non-tie down controls
Stand alone—self-contained or modular designs
Press Ready—specifically designed for presses - a complete package ready to install - see p. 45

DOUBLE
BRACKET
CYLINDER
MOUNTING



2,3 TON
MODELS

DOUBLE
BRACKET
CYLINDER
MOUNTING



3/4, 1 1/4, and
2 TON
MODELS

SHORTER
STROKE
CYLINDER
MOUNTING



1/4, 1/2, 3/4,
1 TON
MODELS

LONGER
STROKE
CYLINDER
MOUNTING



1/4, 1/2, 3/4,
1 TON
MODELS

SHORTER
STROKE
CYLINDER
MOUNTING

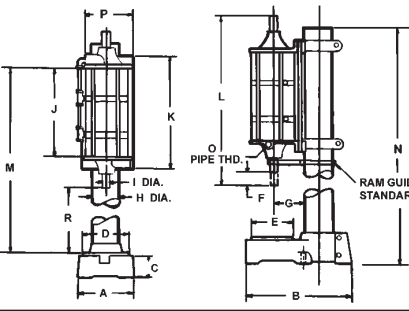


1/4, 1/2, 3/4,
1 TON
MODELS

LONGER
STROKE
CYLINDER
MOUNTING



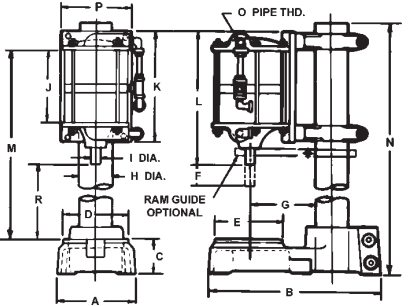
1/4, 1/2, 3/4,
1 TON
MODELS



DOUBLE ACTING-AIR

Model	Bore Size	Power Capacity	Factor	A	B	C	D	E	F	G	H	I	J	K	L	M	N	O	P	R	Pipe Size	Weight
DAP38DR	5	2 Ton	38-1	5 7/8	11 7/8	2 9/16	5 1/16	5 1/16	2 4 9/16	3	1	7 5/8	10 5/8	17 1/4	19	21 1/2	1/2	5 1/2	6 1/4	6	1/2 NPT	100
DAP58DR	5	3 Ton	58-1	5 7/8	11 7/8	2 9/16	5 1/16	5 1/16	2 4 9/16	3	1	12 9/16	14 3/4	22 1/4	23	26 1/2	1/2	6 1/4	6	1/2 NPT	100	

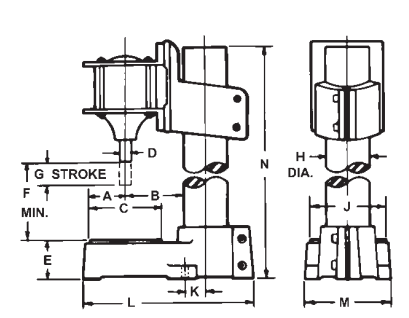
*Cylinder stroke optional. *Column length optional. Ram guides optional. K Dimension figures are approximate



DOUBLE ACTING-AIR

Model	Bore Size	Power Capacity	Factor	A	B	C	D	E	F	G	H	I	J	K	L	M	N	O	P	R	Pipe Size	Weight
DAP14	3	3/4Ton	14-1	4 11/16	10 1/8	2 1/8	4	4	2 4 1/8	2 3/8	1/2	6 5/16	9 1/8	12 1/8	16 3/8	19 1/2	1/4	4	6	1/4	52	
DAP24	4	1 1/4 Ton	24-1	5 7/8	11 7/8	2 9/16	5 1/16	5 1/16	2 4	3 3/4	7 3/4	10 15/16	13 1/8	17 3/4	21 1/2	3/8	5 1/2	6	3/8	90		
DAP38	5	2 Ton	38-1	5 7/8	11 7/8	2 9/16	5 1/16	5 1/16	2 4 9/16	3	1	7 9/16	10 3/4	13	19	21 1/2	1/2	6 1/4	6	1/2	97	

*Larger stroke available on request. *Larger column available on request.



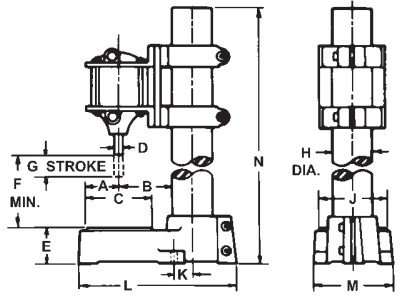
SINGLE ACTING-SPRING

Model No.	Bore Size	Stroke	Power Factor	A	B	C	D	E	F	G	H	J	K	L	M	N	Pipe Size	Net Weight
AP4	2 1/4	1 1/2	3.98	1 7/8	4	4	1/2	2 1/8	6	1 1/2	2 3/8	4	1 3/4	10 1/8	4 11/16	12 3/4	1/4 NPT	40
AP7	3	1 1/2	7.07	1 3/4	4 3/8	4	1/2	2 1/8	6	1 1/2	2 3/8	4	1 3/4	10 1/8	4 11/16	12 3/4	1/4 NPT	41
AP12	4	2	12.56	2	4 1/8	5 3/4	2 9/16	6	2	3	5	1 7/16	11 7/8	5 7/8	14 1/2	3/8 NPT	71	
AP19	5	2	19.63	2	4 11/16	5	1	2 9/16	6	2	3	5	1 7/16	11 7/8	5 7/8	14 1/2	1/2 NPT	73

DOUBLE ACTING-AIR

DAP4	2 1/4	1	3.98	1 7/8	4	4	1/2	2 1/8	6	1	2 3/8	4	1 3/4	10 1/8	4 11/16	12 3/4	1/4 NPT	40
DAP7	3	1	7.07	1 1/2	4 3/8	4	1/2	2 1/8	6	1	2 3/8	4	1 3/4	10 1/8	4 11/16	12 3/4	1/4 NPT	41
DAP12	4	1 1/2	12.56	2 1/2	4 1/8	5 3/4	2 9/16	6	1 1/2	3	5	1 7/16	11 7/8	5 7/8	14 1/2	3/8 NPT	71	
DAP19	5	1 1/2	19.63	2	4 9/16	5	1	2 9/16	6	1 1/2	3	5	1 7/16	11 7/8	5 7/8	14 1/2	1/2 NPT	73

*Column length optional. Ram guides optional. K Dimension figures are approximate



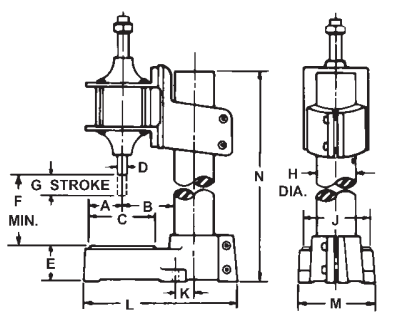
SINGLE ACTING-SPRING

Model No.	Bore Size	Stroke	Power Factor	A	B	C	D	E	F	G*	H	J	K	L	M	N*	Pipe Size	Weight
AP4	2 1/4	2	3.98	1 7/8	3 3/4	4	1/2	2 1/8	6	2	2 3/8	4	1 3/4	10 1/8	4 11/16	15 3/4	1/4 NPT	41
AP7	3	2	7.07	1 3/4	4 1/8	4	1/2	2 1/8	6	2	2 3/8	4	1 3/4	10 1/8	4 11/16	15 3/4	1/4 NPT	43
AP12	4	3	12.56	2 5/8	4	5 3/4	2 9/16	6	3	3	5	1 7/16	11 7/8	5 7/8	18 1/2	3/8 NPT	74	
AP19	5	3	19.63	2	4 1/2	5	1	2 9/16	6	3	3	5	1 7/16	11 7/8	5 7/8	18 1/2	1/2 NPT	76

DOUBLE ACTING-AIR

DAP4	2 1/4	1 1/2	3.98	1 7/8	3 3/4	4	1/2	2 1/8	6	1 1/2	2 3/8	4	1 3/4	10 1/8	4 11/16	15 1/4	1/4 NPT	40
DAP7	3	1 1/2	7.07	1 1/2	4 1/8	4	1/2	2 1/8	6	1 1/2	2 3/8	4	1 3/4	10 1/8	4 11/16	15 1/4	1/4 NPT	41
DAP12	4	2	12.56	2 1/2	4	5 3/4	2 9/16	6	2	3	5	1 7/16	11 7/8	5 7/8	17 1/2	3/8 NPT	71	
DAP19	5	2	19.63	1 7/8	4 1/2	5	1	2 9/16	6	2	3	5	1 7/16	11 7/8	5 7/8	17 1/2	1/2 NPT	72

*Column length optional. *Stroke length optional. Ram guides optional. K Dimension figures are approximate



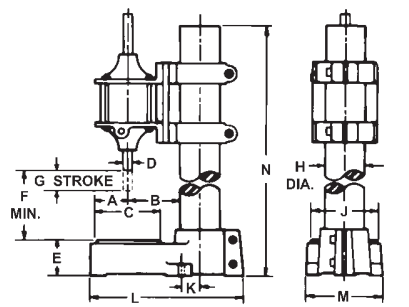
SINGLE ACTING-SPRING

Model No.	Bore Size	Stroke	Power Factor	A	B	C	D*	E	F	G	H	J	K	L	M	N*	Pipe Size	Net Weight
AP4DR	2 1/4	1 1/2	3.98	1 5/8	4	4	1/2	2 1/8	6	1 1/2	2 3/8	4	1 3/4	10 1/8	4 11/16	12 3/4	1/4 NPT	40
AP7DR	3	1 1/2	7.07	1 1/2	4 3/8	4	1/2	2 1/8	6	1 1/2	2 3/8	4	1 3/4	10 1/8	4 11/16	12 3/4	1/4 NPT	41
AP12DR	4	2	12.56	2 1/2	4 1/8	5 3/4	2 9/16	6	2	3	5	1 7/16	11 7/8	5 7/8	14 1/2	3/8 NPT	73	
AP19DR	5	2	19.63	1 7/8	4 11/16	5	1	2 9/16	6	2	3	5	1 7/16	11 7/8	5 7/8	14 1/2	1/2 NPT	75

DOUBLE ACTING-AIR

DAP4DR	2 1/4	1	3.98	1 3/8	4	4	1/2	2 1/8	6	1	2 3/8	4	1 3/4	10 1/8	4 11/16	12 3/4	1/4 NPT	40
DAP7DR	3	1	7.07	1 1/2	4 3/8	4	1/2	2 1/8	6	1	2 3/8	4	1 3/4	10 1/8	4 11/16	12 3/4	1/4 NPT	41
DAP12DR	4	1 1/2	12.56	2 1/2	4 1/8	5 3/4	2 9/16	6	1 1/2	3	5	1 7/16	11 7/8	5 7/8	14 1/2	3/8 NPT	73	
DAP19DR	5	1 1/2	19.63	1 7/8	4 11/16	5	1	2 9/16	6	1 1/2	3	5	1 7/16	11 7/8	5 7/8	14 1/2	1/2 NPT	75

*Column length optional. Ram guides optional. K Dimension figures are approximate



SINGLE ACTING-SPRING

Model No.	Bore Size	Stroke	Power Factor	A	B	C	D	E	F*	G*	H	J	K	L	M	N*	Pipe Size	Net Weight
AP4DR	2 1/4	2	3.98	1 7/8	3 3/4	4	1/2	2 1/8	6	2	2 3/8	4	1 3/4	10 1/8	4 11/16	15 3/4	1/4 NPT	40
AP7DR	3	2	7.07	1 3/4	4 1/8	4	1/2	2 1/8	6	2	2 3/8	4	1 3/4	10 1/8	4 11/16	15 3/4	1/4 NPT	41
AP12DR	4	3	12.56	2 5/8	4	5 3/4	2 9/16	6	3	3	5	1 7/16	11 7/8	5 7/8	18 1/2	3/8 NPT	72	
AP19DR	5	3	19.63	2	4 1/2	5	1	2 9/16	6	3	3	5	1 7/16	11 7/8	5 7/8	18 1/2	1/2 NPT	75

DOUBLE ACTING-AIR

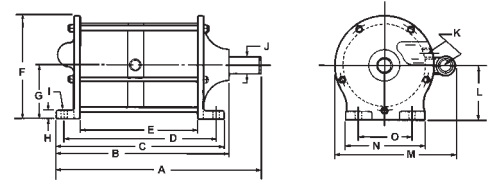
DAP4DR	2 1/4	1 1/2	3.98	1 7/8	3 3/4	4	1/2	2 1/8	6	1 1/2	2 3/8	4	1 3/4	10 1/8	4 11/16	15 1/4	1/4 NPT	41
DAP7DR	3	1 1/2	7.07	1 1/2	4 1/8	4	1/2	2 1/8	6	1 1/2	2 3/8	4	1 3/4	10 1/8	4 11/16	15 1/4	1/4 NPT	42
DAP12DR	4	2	12.56	2 1/2	4	5 3/4	2 9/16	6	2	3	5	1 7/16	11 7/8	5 7/8	17 1/2	3/8 NPT	73	
DAP19DR	5	2	19.63	2	4 9/16	5	1	2 9/16	6	2	3	5	1 7/16	11 7/8	5 7/8	17 1/2	1/2 NPT	76

CLASSIC DESIGN
TANDEM & TRIPLEX CYLINDERS
SINGLE OR DOUBLE ROD END

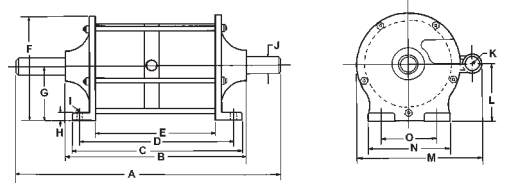
FOOT MOUNT
SINGLE OR DOUBLE ROD END
DAP550



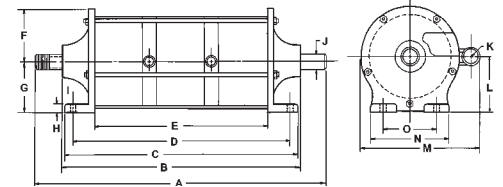
DAP550



DAP550DR



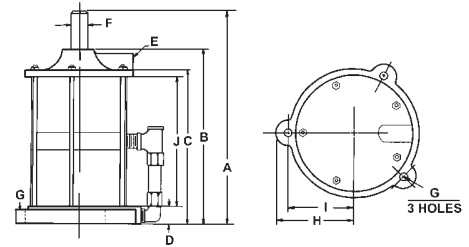
DAP580DR



Note: 550 Models
Shown

REAR FLANGE MOUNT

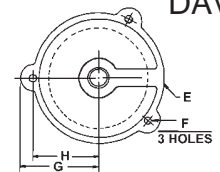
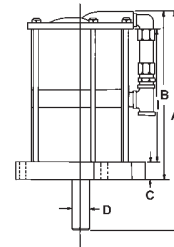
DAV550



DAV550

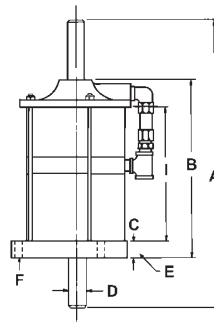
FRONT FLANGE MOUNT
SINGLE OR DOUBLE
ROD END

DAVF 550

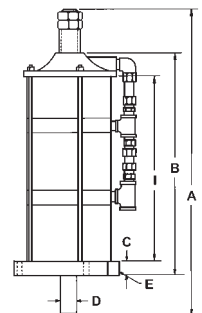


DAVF550

DAVF550DR



DAVF550DR



DAVF580DR

Cylinder Rod End Options - See chart on back cover.

AIR-MITE Tandem & Triplex Cylinders consist of two or three separate bore areas mounted in-line with pistons connected on a common piston rod or rods. They are available in either single or double end models. The main advantage of these cylinders is the multiplication of force they can deliver without needing larger bores or higher operating pressure.

All tandem and triplex foot mounted cylinders provide the cylinder component used on all AIR-MITE presses. All tandem and triplex cylinders shown at left can provide deliverable force in either the extend or retract position. Advise factory when ordering. Unless specified when ordering, cylinders will provide force in the extend position.

Note: Consult factory for strokes of less than 2" and longer than 6".

Shown are standard strokes - Additional length as required

Model No.	Bore	Stroke	Power* Factor	A	B	C	D	E	F	G	H	I	J	K	L	M	N	O
DAP350	3	2	14.1	11 1/4	9 3/4	9 1/4	8 7/16	6 15/16	4 1/16	2 1/16	7/16	1/4	1/2	1/4	2 1/2	5	3 1/8	2 3/8
DAP450	4	2	24.1	12 3/4	11 1/4	10 11/16	9 13/16	7 11/16	5 7/16	2 3/4	1/2	27/64	3/4	3/8	3 5/16	6 7/16	4 7/8	3 3/8
DAP550	5	2	38.1	13	11	10 5/8	9 11/16	7 5/8	6 1/2	3 5/16	9/16	27/64	1	1/2	4	7 11/16	5	3 3/8

Model No.	Bore	Stroke	Power* Factor	A	B	C	D	E	F	G	H	I	J	K	L	M	N	O
DAP350DR	3	2	14.1	15 1/4	10 1/4	9 5/16	8 1/2	7	4 1/16	2 1/16	7/16	1/4	1/2	1/4	2 1/2	5	3 1/8	2 3/8
DAP450DR	4	2	24.1	17 1/8	12	10 11/16	9 13/16	7 11/16	5 7/16	2 3/4	1/2	27/64	3/4	3/8	3 5/16	6 7/16	4 7/8	3 3/8
DAP550DR	5	2	38.1	17 1/4	11 3/8	10 5/8	9 11/16	7 5/8	6 1/2	3 5/16	9/16	27/64	1	1/2	4	7 11/16	5	3 3/8
DAP580DR	5	2	58.1	22	16 1/8	15 7/8	14 1/2	12 3/8	6 1/2	3 5/16	9/16	27/64	1	1/2	4	7 11/16	5	3 3/8

*Figures are theoretical. See chart on back cover.

Note: All tandem and triplex cylinders are assembled with side piping or manifolding. If no piping is required, advise factory when ordering. See price list for correct pricing.

Shown are standard strokes - Additional length as required

Model No.	Bore	Stroke	Power* Factor	A	B	C	D	E	F	G	H	I	J
DAV350	3	2	14.1	10 11/16	9 3/16	7 13/16	5/8	1/4	1/2	5/16	2 9/32	2 5/8	6 7/8
DAV450	4	2	24.1	12 1/8	10 1/2	8 5/8	1	3/8	3/4	3/8	3 1/2	3 1/16	7 1/4
DAV550	5	2	38.1	12 5/8	10 1/16	9 1/16	1 1/8	1/2	1	3/8	4	3 1/2	7 9/16
DAV580	5	2	58.1	17 9/16	15 1/16	14 1/16	1 1/8	1/2	1	13/32	4	3 1/2	12 11/16

*Figures are theoretical. See chart on back cover.

The DAV Series-Rear Flange Mount—of tandem and triplex cylinders is for applications requiring double or triple the force of conventional cylinders and still maintaining the same flange size. Standard models generate force in the extend position. Specify when ordering if force is required in the retract position. For strokes less than 2" or longer than 6" please consult factory.

Shown are standard strokes - Additional length as required

Model No.	Bore	Stroke	Power* Factor	A	B	C	D	E	F	G	H	I
DAVF350	3	2	14.1	10 7/16	8 7/8	1	1/2	1/4	5/16	2 7/8	2 7/16	7
DAVF450	4	2	24.1	12	9 7/8	1 1/8	3/4	3/8	3/8	3 1/2	3	7 9/16
DAVF550	5	2	38.1	13 1/8	10 7/8	1 3/8	1	1/2	3/8	4	3 1/2	7 11/16
DAVF580	5	2	58.1	17 7/8	15 1/4	1 3/8	1	1/2	13/32	4	3 1/2	12 7/16

*Figures are theoretical. See chart on back cover.

Model No.	Bore	Stroke	Power* Factor	A	B	C	D	E	F	G	H	I
DAVF350DR	3	2	14.1	14 5/8	11 1/8	1	1/2	1/4	5/16	2 7/8	2 7/16	7
DAVF450DR	4	2	24.1	16 1/4	10 3/4	1 1/8	3/4	3/8	3/8	3 1/2	3	7 9/16
DAVF550DR	5	2	38.1	17 1/4	10 3/8	1 3/8	1	1/2	3/8	4	3 1/2	7 5/8
DAVF580DR	5	2	58.1	22	15 5/8	1 3/8	1	1/2	3/8	4	3 1/2	12 7/8

*Figures are theoretical. See chart on back cover.

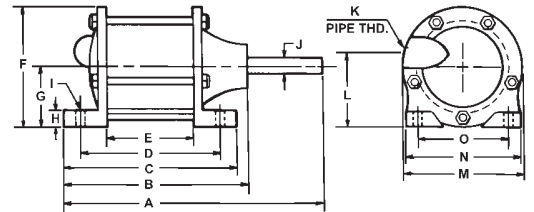
The DAVF Series-Front Flange Mount—of tandem and triplex cylinders is for applications requiring double or triple the force of conventional cylinders. Available in both single or double rod (DR) end models. Standard models generate force in the extend position. Specify when ordering if force is required in the retract position. For strokes less than 2" or longer than 6" please consult factory.

PLEASE NOTE: Air cylinders and air presses are required to be used with guards or anti tie-down controls as per OSHA regulations. This applies to all cylinders shown on pages 6, 7, 8, 9, 10, 11, 12, 13.

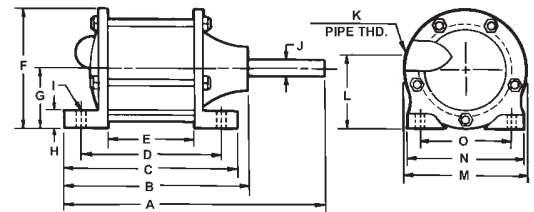
CLASSIC DESIGN FOOT MOUNT MODELS SINGLE OR DOUBLE ROD END

FOOT MOUNT

“P” SERIES
SPRING RETURN

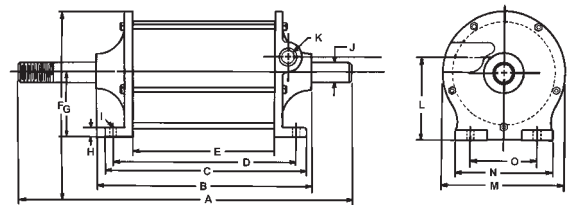


“DAP” SERIES
DOUBLE ACTING

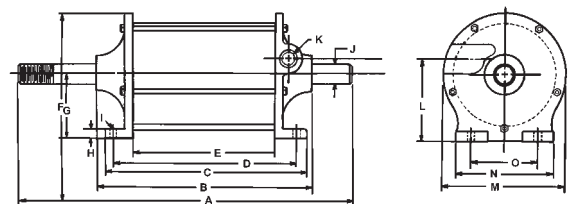


FOOT MOUNT DOUBLE ROD END

“PDR” SERIES
SPRING RETURN



“DAPDR” SERIES
DOUBLE ACTING



SPECIFICATIONS – CLASSIC DESIGN SERIES CYLINDERS

- Cast Impregnated Aluminum End Caps
- Oilite Bearings
- Extra Long Life Lip Seals – Buna N for smooth breakaway
- Hard Coated Aluminum Tube – Pre-lubed surface for extended cycle life
- Piston Rods – Ground & polished steel
- Tie Rod Construction – 5 Tie Rods for maximum rigidity & stretch on longer stroke models
- Operating Pressures: 25-120 psi air
- Cylinder Stroke Lengths – Spring return – up to 4" Double Acting – as required

ROD END – OPTIONS

- Type 1 Blank-standard
- Type 2 Full thread-male (UNF)
- Type 3 Reduced diameter male thread (UNF)
- Type 4 Female UNF thread
- Type 5 Per customer requirement
- WF Wrench Flats available for all cylinders
- *See chart on back cover

Rod Clevis - For all classic cylinders

Cyl Model	Clevis
150	145A 3/8-24 UNF
225, 300	245 A 1/2-20 UNF
400	345A 3/4-16 UNF
500	445 1"-14 UNF

Shown are standard strokes for immediate shipment - Additional as required

Stock No.	Bore	Stroke	Power* Factor	A	B	C	D	E	F	G	H	I	J	K	L	M	N	O
P150	1 1/2	1 1/2	1.76	5 5/16	4 3/16	4	3 3/8	2 3/16	2 5/16	1 3/16	5/16	3/16	3/8	1/8	1 1/2	2 5/16	2 1/4	1 5/8
P225	2 1/4	1 1/2	3.98	6 3/8	4 13/16	4 9/16	3 3/4	2 3/16	3 3/8	1 11/16	7/16	1/4	1/2	1/4	2 3/16	3 3/8	3 3/16	2 3/8
P300	3	1 1/2	7.07	6 3/8	5	4 5/8	3 3/4	2 5/16	4 3/16	2 1/16	1/2	1/4	1/2	1/4	2 17/32	4 1/8	3 1/8	2 3/8
P400	4	2	12.56	8 1/8	6 5/8	6	5 1/8	3	5 1/2	2 11/16	1/2	3/8	3/4	3/8	3 5/16	5 3/8	4 7/8	3 3/8
P500	5	2	19.63	8	6 3/8	6	5 1/8	3	6 1/2	3 5/16	1/2	3/8	1	1/2	4	6 3/8	5	3 3/8

*Figures are theoretical. See chart on back cover.

Dimensions given are for 1 Stroke

Stock No.	Bore	Power* Factor	A	B	C	D	E	F	G	H	I	J	K	L	M	N	O
DAP150	1 1/2	1.76	5 1/4	4 1/16	3 13/16	3 1/4	2	2 5/16	1 3/16	5/16	3/16	3/8	1/8	1 7/16	2 5/16	2 1/4	1 5/8
DAP225	2 1/4	3.98	6 3/8	4 3/4	4 3/8	3 3/4	2 3/32	3 3/8	1 3/4	7/16	1/4	1/2	1/4	2 3/16	3 1/4	3 3/16	2 3/8
DAP300	3	7.07	6 7/16	4 15/16	4 9/16	3 7/8	2 1/4	4 3/16	2 1/16	1/2	1/4	1/2	1/4	2 17/32	4 3/16	3 3/16	2 3/8
DAP400	4	12.56	7 3/4	6 1/8	5 1/2	4 5/8	2 1/2	5 1/2	2 11/16	1/2	3/8	3/4	3/8	3 1/4	5 1/2	5	3 3/8
DAP500	5	19.63	7 3/4	6	5 9/16	4 5/8	2 1/2	6 1/2	3 5/16	1/2	3/8	1	1/2	3 31/32	6 3/8	5	3 3/8

*Figures are theoretical. See chart on back cover.

The P and DAP double rod end series provide two features not found on our single rod end models. First, the ability to micro adjust the stroke length. Second, a greater bearing surface to minimize deflection of the piston rod on the workpiece. These models are the cylinder component of our air presses as well as sold

separately as foot mounted cylinders. They offer long life and high cycling at affordable prices.

Double rod end models are especially useful for applications with exceptionally long strokes where deflection is a problem.

Shown are standard strokes - Additional strokes as required

Stock No.	Bore	Stroke	Power* Factor	A	B	C	D	E	F	G	H	I	J	K	L	M	N	O
P150DR	1 1/2	1 1/2	1.76	8 3/16	4 9/16	4 1/8	3 1/2	2 1/4	2 5/16	1 3/16	5/16	3/16	3/8	1/8	1 7/16	2 5/16	2 1/4	1 5/8
P225DR	2 1/4	1 1/2	3.98	9 13/16	5 5/16	4 5/8	3 3/4	2 3/16	3 3/8	1 11/16	7/16	1/4	1/2	1/4	2 1/4	3 3/8	3 3/16	2 3/8
P300DR	3	1 1/2	7.07	10	5 1/2	4 9/16	3 3/4	2 1/4	4 3/16	2 1/16	5/16	1/4	1/2	1/4	2 1/2	4 1/8	3 1/8	2 3/8
P400DR	4	2	12.56	12 3/8	7 1/4	6 1/16	5 1/8	3	5 1/2	2 11/16	1/2	3/8	3/4	3/8	3 1/4	5 3/8	4 7/8	3 3/8
P500DR	5	2	19.63	12	6 13/16	6 1/16	5 1/8	3 1/16	6 1/2	3 5/16	1/2	3/8	1	1/2	4	6 3/8	5	3 3/8

*Figures are theoretical. See chart on back cover.

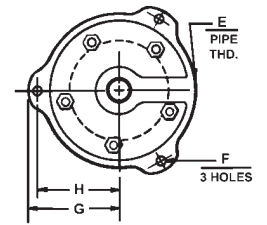
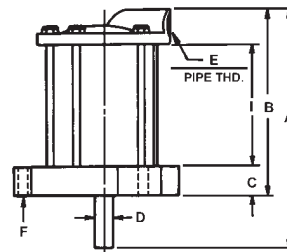
Dimensions given are for 1 Stroke - Additional strokes as required

Stock No.	Bore	Stroke	Power* Factor	A	B	C	D	E	F	G	H	I	J	K	L	M	N	O
DAP150DR	1 1/2	1	1.76	8 1/2	4 1/2	4	3 3/8	2 1/8	2 5/16	1 3/16	5/16	3/16	3/8	1/8	1 7/16	2 5/16	2 1/4	1 5/8
DAP225DR	2 1/4	1	3.98	9 7/16	6 5/16	4 11/16	3 3/4	2 3/16	3 3/8	1 3/4	7/16	1/4	1/2	1/4	2 1/8	3 3/8	3 3/16	2 3/8
DAP300DR	3	1	7.07	9 1/2	6 1/2	4 9/16	3 3/4	2 3/16	4 3/16	2 1/16	1/2	3/8	1/2	1/4	2 1/2	4 3/16	3 3/16	2 3/8
DAP400DR	4	1	12.56	10 7/8	6 3/4	5 9/16	4 5/8	2 1/2	5 1/2	2 11/16	1/2	3/8	3/4	3/8	3 1/4	5 1/2	5	3 3/8
DAP500DR	5	1	19.63	10 5/8	6 5/8	5 9/16	4 5/8	2 9/16	6 1/2	3 5/16	1/2	3/8	1	1/2	4	6 3/8	5	3 3/8

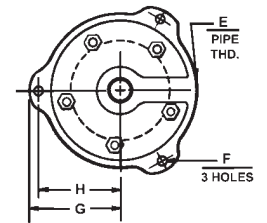
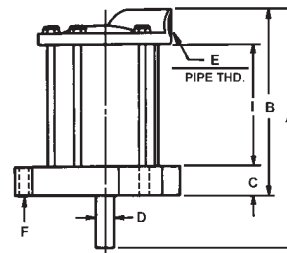
*Figures are theoretical. See chart on back cover.

FRONT FLANGE MOUNT

“VF” SERIES
SPRING RETURN

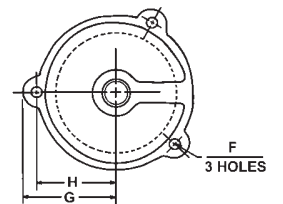
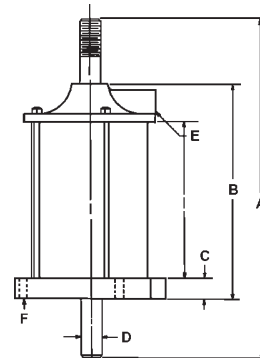


“DAVF” SERIES
DOUBLE ACTING

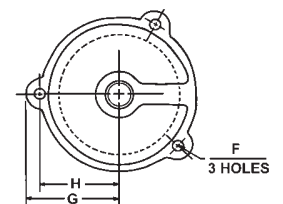
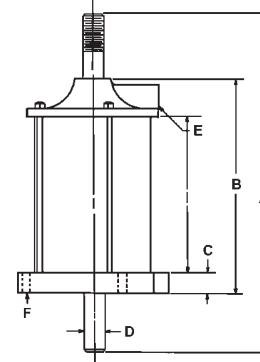


FRONT FLANGE MOUNT
DOUBLE ROD END MODELS

“VFDR” SERIES
SPRING RETURN



“DAVFDR” SERIES
DOUBLE ACTING



Cylinder Rod End Options - See chart on back cover.

Model No.	Bore	Stroke	Power* Factor	A	B	C	D	E	F	G	H
VF150	1 1/2	1 1/2	1.76	5 1/4	4 1/4	1/2	3/8	1/8	3/16	1 11/16	1 7/16
VF225	2 1/4	1 1/2	3.98	6 1/8	4 3/4	1/2	1/2	1/4	1/4	2 1/4	2
VF300	3	1 1/2	7.07	6 3/8	5 1/8	5/8	1/2	1/4	5/16	2 3/4	2 7/16
VF400	4	2	12.56	8 1/4	6 1/2	1 1/16	3/4	3/8	3/8	3 1/2	3
VF500	5	2	19.63	7 3/4	6 1/4	1 1/8	1	1/2	3/8	4	3 1/2

*Figures are theoretical. See chart on back cover.

Given dimensions include 1 of stroke advise length of stroke required.

Model No.	Bore	Power* Factor	A	B	C	D	E	F	G	H	I
DAV F150	1 1/2	1.76	5 1/8	4 1/16	7/8	3/8	1/8	3/16	1 3/4	1 7/16	
DAV F225	2 1/4	3.98	6 1/16	4 1/8	7/8	1/2	1/4	1/4	2 3/8	2	
DAV F300	3	7.07	5 11/16	4 3/16	1	1/2	1/4	5/16	2 7/8	2 7/16	2 9/32
DAV F400	4	12.56	7	4 15/16	11/16	3/4	3/8	3/8	3 1/2	3	2 9/16
DAV F500	5	19.63	7 1/8	5 1/8	11/8	1	1/2	3/8	4	3 1/2	2 9/16

*Figures are theoretical. See chart on back cover.

Longer strokes available consult factory

Model No.	Bore	Stroke	Power* Factor	A	B	C	D	E	F	G	H	I
VF150DR	1 1/2	1 1/2	1.76	8 1/4	4 11/16	3/8	3/8	1/8	3/16	1 11/16	1 7/16	3 1/16
VF225DR	2 1/4	1 1/2	3.98	9 13/16	5 7/16	1/2	1/2	1/4	1/4	2 1/4	2	3 3/8
VF300DR	3	1 1/2	7.07	10 3/16	5 11/16	5/8	1/2	1/4	5/16	2 7/8	2 7/16	3 7/16
VF400DR	4	2	12.56	12 3/8	7 3/8	1 1/8	3/4	3/8	3/8	3 1/2	3	4 3/16
VF500DR	5	2	19.63	11 3/8	6 3/8	1 3/8	1	1/2	3/8	4	3 1/2	3 5/8

*Figures are theoretical. See chart on back cover.

Dimensions given for 1 stroke

Longer strokes available consult factory

Model No.	Bore	Stroke	Power* Factor	A	B	C	D	E	F	G	H	I
DAVF150DR	1 1/2	1	1.76	8 1/8	4 1/8	3/4	3/8	1/8	3/16	1 3/4	1 7/16	2 3/16
DAVF225DR	2 1/4	1	3.98	2 13/16	4 9/16	7/8	1/2	1/4	5/16	2 3/8	2	2 1/8
DAVF300DR	3	1	7.07	9 1/16	4 15/16	1	1/2	1/4	5/16	2 7/8	2 7/16	2 1/4
DAVF400DR	4	1	12.56	10 1/8	5 13/16	1 1/8	3/4	3/8	3/8	3 1/2	3	2 9/16
DAVF500DR	5	1	19.63	12 9/16	5 3/4	1 3/8	1	1/2	3/8	4	3 1/2	3 1/16

*Figures are theoretical. See chart on back cover.

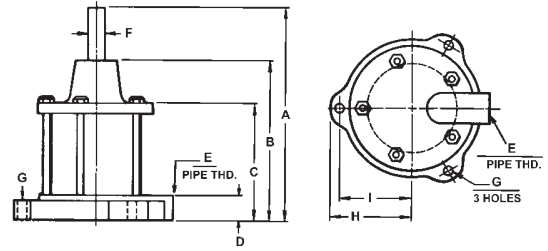
VF & DAVF Front Flange Models provide a piston rod that extends through the mounting surface permitting the cylinder to be mounted behind or under the surface and free of the work area.

The VF and DAVF Classic Series DR cylinders provide a double rod bearing surface for increased stability and less deflection. A rod nut is supplied on one rod to aid in variable stroke adjustment. This affords the user a multi stroke capability with just one cylinder.

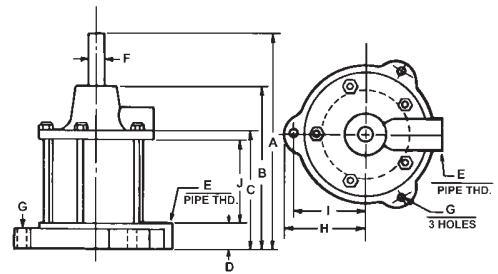
PLEASE NOTE: Air cylinders and air presses are required to be used with guards or anti tie-down controls as per OSHA regulations. This applies to all cylinders shown on pages 6, 7, 8, 9, 10, 11, 12, 13.

CLASSIC DESIGN REAR FLANGE, PULL & CLEVIS MOUNTED MODELS

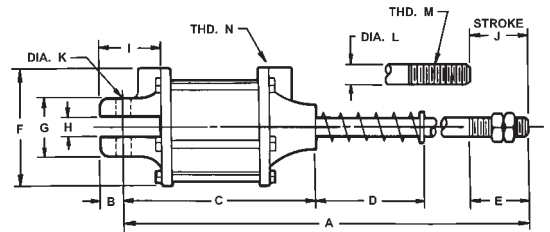
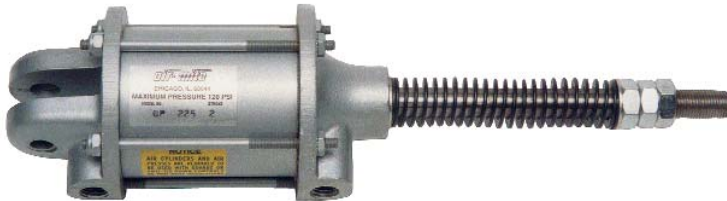
REAR FLANGE MOUNT



SPRING RETURN "V" SERIES

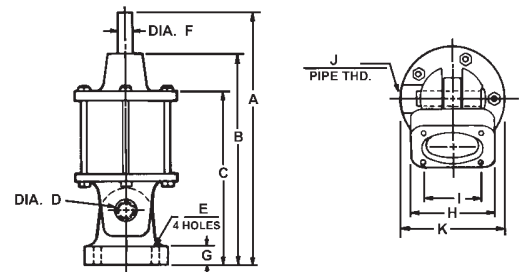


PULL MODELS

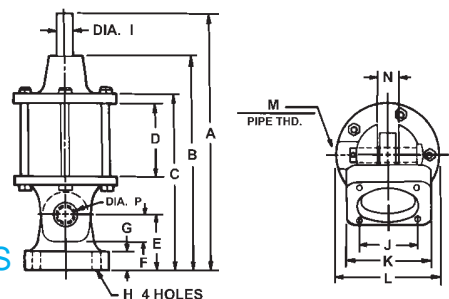


SPRING RETURN "CP" SERIES

CLEVIS MOUNTED MODELS



SPRING RETURN "C" SERIES



DOUBLE ACTING "DAC" SERIES

Model No.	Bore	Stroke	Power* Factor	A	B	C	D	E	F	G	H	I
V150	1 1/2	1 1/2	1.76	5 3/16	4 1/8	3 1/8	9/16	1/8	3/8	3/16	1 3/4	1 7/16
V225	2 1/4	1 1/2	3.98	6	4 9/16	3 3/16	5/8	1/4	1/2	9/32	2 1/4	1 7/8
V300	3	1 1/2	7.07	6 1/8	4 3/4	3 3/8	5/8	1/4	1/2	5/16	2 7/8	2 1/4
V400	4	2	12.56	7 5/8	6 3/16	4 5/16	1 1/8	3/8	3/4	3/8	3 1/2	3
V500	5	2	19.63	7 5/8	6 1/16	4 1/2	1 7/16	1/2	1	3/8	4	3 1/2

*Figures are theoretical. See chart on back cover.

Rear Flange mounted cylinders are widely used in applications requiring increased holding power. They are mounted with the direction of effort at right angles and away from the mounting surface.

Dimensions given are for 1 Stroke

Model No.	Bore	Power* Factor	A	B	C	D	E	F	G	H	I	J
DAV150	1 1/2	1.76	5 1/4	3 7/8	2 15/16	9/16	1/8	3/8	3/16	1 11/16	1 7/16	2
DAV225	2 1/4	3.98	5 15/16	4 5/16	3 1/16	5/8	1/4	1/2	9/32	2 1/4	1 7/8	2 3/32
DAV300	3	7.07	5 15/16	4 9/16	3 5/16	5/8	1/4	1/2	5/16	2 5/8	2 1/4	2 1/4
DAV400	4	12.56	7 1/8	5 11/16	3 13/16	11/8	3/8	3/4	3/8	3 1/2	3	2 1/2
DAV500	5	19.63	7 1/8	5 3/16	4	1 7/16	1/2	1	3/8	4	3 1/2	2 1/2

*Figures are theoretical. See chart on back cover.

Stock No.	Bore	Power* Factor	A	B	C	D	E	F	G	H	I	J	K	L	M	N
CP150	1 1/2	1.76	10	5/8	4 5/8	2 11/16	1 1/2	2 3/8	1 3/8	1/2	1 3/4	1 1/2	3/8	3/8	3/8-24	1/8
CP225	2 1/4	3.98	10 3/4	9/16	5	2 3/4	1 1/2	3 1/4	1 5/8	1/2	1 15/16	1 1/2	3/8	1/2	1 1/2-20	1/4
CP300	3	7.07	10 1/8	15/16	5 3/16	2 3/4	1 1/2	4 1/4	2 1/16	5/8	2 1/4	1 1/2	1/2	1/2	1 1/2-20	1/4
CP400	4	12.56	12 13/16	13/16	7	3 7/8	1 1/2	5 3/16	1 11/16	3/4	2 1/2	2	5/8	3/4	3/4-16	3/8
CP500	5	19.63	13 1/8	15/16	6 1/2	4 7/8	1 1/2	6 1/4	2 1/8	1	2 11/16	2	3/4	1	1-14	1/2

**Ram extension optional.

*Larger stroke cylinders available.

MOUNTING BRACKET NOT AVAILABLE FOR CP500

The CP Series features a normally extended piston rod using air to retract the rod. Stroke lengths from 1.5" to 4" are available. Rod clevises are available for all models. Clevis bases are options for all except the CP500 model. CP cylinders should not be used for power press applications.

Stock No.	Bore	Power* Factor	A	B	C	D	E	F	G	H	I	J	K	
C150	1 1/2	1.76	7	5 7/8	5	1/2	1/4	3/8	1/2	21/4	1 3/8	1/8	2 3/8	
C225	2 1/4	1 1/2	3.98	8 1/4	6 5/8	5 3/8	9/16	1/4	1/2	1/2	2 11/16	1 3/4	1/4	3 1/4
C300	3	1 1/2	7.07	8 1/2	7 1/8	5 7/8	5/8	5/16	1/2	5/8	3 1/4	2 3/8	1/4	4 1/4
C400	4	2	12.56	10 5/8	9	7 1/8	5/8	3/8	3/4	3/4	4 1/4	3 1/4	3/8	5 3/16
C500	5	2	19.63	9 3/4	8 1/16	6 5/8	3/4	-	1	No Base Available	1/2			

*Figures are theoretical. See chart on back cover.

Dimensions on C500 are for O.A.L.

CLEVIS BASE NOT AVAILABLE FOR C500 & DAC500

CLEVIS MOUNTED cylinders are used in applications where the fixture has an "off line" or arc movement. It has a full swing from 20-160 degrees in a plane vertical to the base and will readily supply power the length of the entire arc.

Given dimensions include 1 of stroke advise length of stroke required.

Model No.	Bore	Power* Factor	A	B	C	D	E	F	G	H	I	J	K	L	M	N	P
DAC150	1 1/2	1.76	6 7/8	5 9/16	4 5/8	2	1 1/4	5/8	1/2	1/4	3/8	1 3/8	2 1/4	2 3/8	1/8	1/2	3/8
DAC225	2 1/4	3.98	7 11/16	6 1/8	4 7/8	2 3/32	1 5/16	11/16	1/2	1/4	1/2	1 3/4	2 11/16	3 1/4	1/4	1/2	3/8
DAC300	3	7.07	8 1/4	6 7/8	5 7/16	2 1/4	1 3/4	15/16	5/8	5/16	1/2	2 3/8	3 1/4	4 1/4	1/4	5/8	1/2
DAC400	4	12.56	10 1/8	8 1/2	6 5/8	2 1/2	2 1/4	1 1/8	3/4	3/8	3/4	2 1/4	4 5/16	5 1/2	3/8	3/4	5/8
DAC500	5	19.63	9 1/8	7 1/8	6 1/8	2 1/2		1 3/8		3/8	1			6 1/4	1/2	1	3/4

*Figures are theoretical. See chart on back cover.

DAR CYLINDERS – AIR-150 PSI WATER/L.P. HYDRAULIC-250 PSI



DAR cylinders are available with in-port "ROTO-FLO" Speed Controls. See page 52 for further information.

DAR cylinders offer space saving design for many types of fixtures and machinery. Unique design permits complete interchangeability of cylinders and accessories with those of similar round cylinder lines. Makes a simple field replacement possible in existing or new applications. Cylinders are available in both single and

double rod end styles. For all models, stroke lengths of 1" thru 6" are ready to ship from inventory. Additional stroke lengths—as required.

Cylinders are assembled and shipped with port configurations as noted in above photos.

Model No.	Bore Size	A	B	C	D	E	F	G	H	J	K	L	M	N	O
DAR10	1 1/8	2 1/16	3/8	1 3/8	5/8	1	21/32	3/8	1	7/8	2 1/2	2	1 3/8	1 5/8	7/8
DAR15	1 1/2	2 5/8	1/2	1 3/4	7/8	1 1/4	7/8	1/2	1 1/2	1 1/4	3 1/4	2 1/2	1 9/32	1 5/8	1 1/16
DAR20	2	2 5/8	1/2	2 1/4	7/8	1 1/4	7/8	1/2	1 1/2	1 1/4	3 1/4	2 1/2	1 9/32	1 5/8	1 1/16
DAR25	2 1/2	2 7/8	9/16	2 3/4	1	2	1 3/8	5/8	1 11/16	1 1/2	4 1/2	3 3/8	1 29/32	2 1/4	1 3/8
DAR30	3	2 7/8	9/16	3 1/4	1	2	1 3/8	5/8	1 11/16	1 1/2	4 1/2	3 3/8	1 29/32	2 1/4	1 3/8
DAR40	4	4 7/8	13/16	4 1/4	1 1/8	2 3/16	1 7/16	3/4	2 1/4	1 7/8	5 1/4	4	2 17/32	3 1/4	1 3/4

Model No.	Bore Size	P	R	S	T	U	V	W	X	Y	Z	A-A	B-B	C-C	D-D	E-E	Z-Z
DAR10	1 1/8	5/8	15/32	7/8	2 1/4	9/32	1 3/4	2 1/4	1 3/4	3/8	1/4	1/8	3/4-16	3/8-16	1 5/16	1	1/4
DAR15	1 1/2	7/8	9/16	1 3/4	3	9/32	2 1/4	2 1/4	1 3/4	3/8	5/16	1/4	1-14	1/2-13	1 5/16	1	5/16
DAR20	2	7/8	9/16	1 3/4	3	9/32	2 1/4	2 1/4	1 3/4	3/8	5/16	1/4	1-14	5/8-11	1 5/16	1	5/16
DAR25	2 1/2	1 1/4	7/8	2 3/8	4	13/32	3	2 3/8	1 13/16	1/2	7/16	3/8	1 3/8-12	3/4-10	1 5/16	1 1/4	7/16
DAR30	3	1 1/4	7/8	2 3/8	4	13/32	3	2 3/8	1 13/16	1/2	7/16	3/8	1 3/8-12	3/4-10	1 5/16	1 1/4	7/16
DAR40	4	1 3/4	1 5/16	3 7/16	5	1 5/32	3 3/4	3 3/8	2 5/8	5/8	1/2	1/2	1 3/4-12	1-14	1 13/16	1 1/2	1/2

NOTE: DAR10 cylinders available with oversize 7/8-14 mtg. threads EB -Advise.

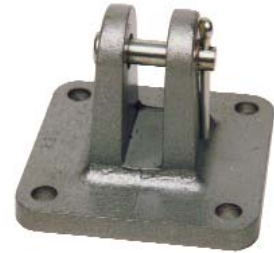
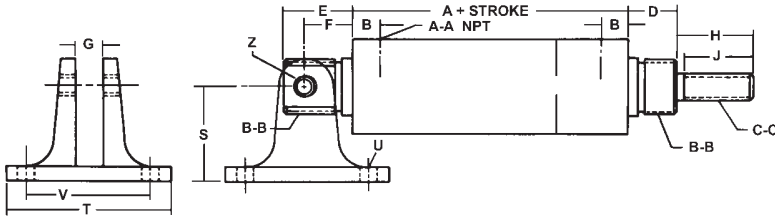
SPECIFICATIONS

Front and Rear End Caps Anodized Aluminum
 Tubing Hard Coated Aluminum
 Piston Rods Zinc or Chrome Plated Steel Stainless Steel optional
 Piston Rods Threaded with Wrench Flats standard
 Piston Seal Buna N standard Viton Seals optional
 Double Rod Ends Available for all cylinders
 Removal of Rear Tang Optional
 Swivel of Rear Tang 90 Available for all cylinders

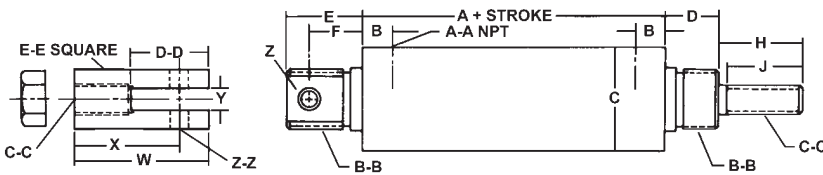
ROD END – OPTIONS

- Type 1 Plain
- Type 2 Full male thread (UNF)
- Type 2NC - Full male thread (UNC)
- Type 3 Shoulder and external male thread
- Type 4 Internal thread
- Type 5 Per customer requirement

ROD EXTENSION Shown (See chart & drawing) Additional As required



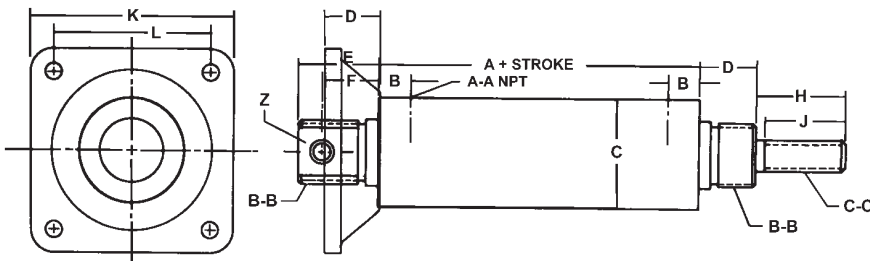
SWIVEL BRACKET
 139 1 1/8" BORE
 239 1 1/8"-2" BORE
 339 2 1/8"-3" BORE
 439 4" BORE



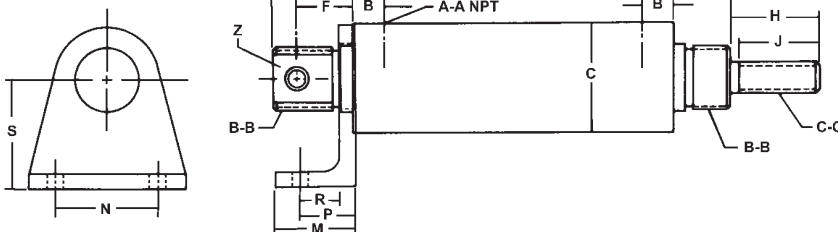
ROD CLEVIS
 110 1 1/8" BORE
 145 1 1/8" BORE
 245 2" BORE
 345 2 1/8"-3" BORE
 445 4" BORE

 110 3/8" x 16
 THREAD
 145 1/2" x 13
 THREAD
 245 5/8" x 11
 THREAD

Basic Cylinder Dimensions



FLANGE MOUNT
 129 1 1/8" BORE
 229 1 1/8" - 2" BORE
 329 2 1/8"-3" BORE
 429 4" BORE

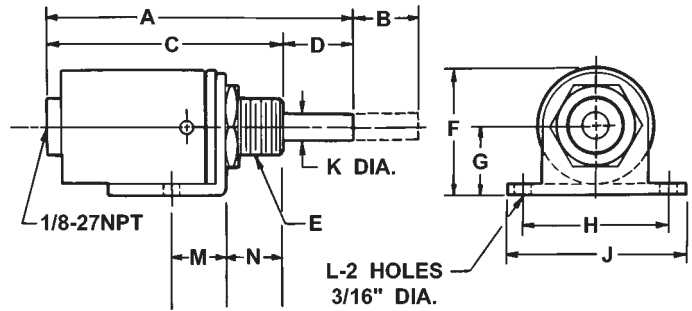


FOOT MOUNT
 132A 1 1/8" BORE
 132 1 1/8" BORE
 232 2" BORE
 332 2 1/8"-3" BORE
 434 4" BORE

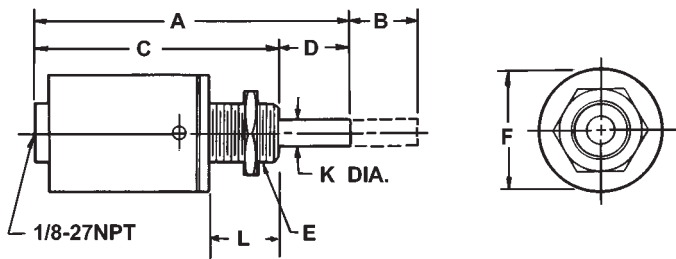
MICRO MODELS – 3/4", 1", 1 1/8", 1 1/4" BORES
SINGLE AND DOUBLE ACTING

SINGLE ACTING

"P" SERIES
FOOT MOUNT

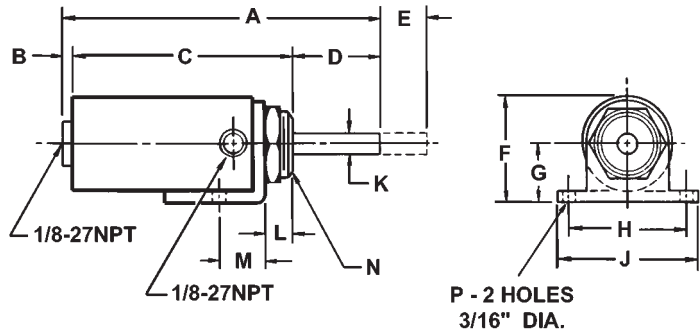


"V" SERIES
NOSE MOUNT

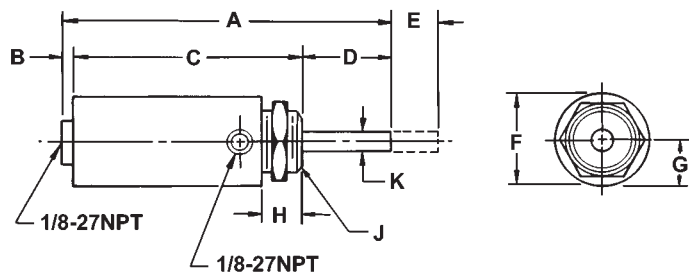


DOUBLE ACTING

"DAP" SERIES
FOOT MOUNT



"DAV" SERIES
NOSE MOUNT



Micro model cylinders are "bantam" cylinders designed specifically for limited space applications. Single and double acting models provide ample power for many applications: clamping, locking, ejection, throttling are but a few. Controlled singly or in groups, all cylinders are repairable and easily repaired or replaced in the field.

Stock No.	Bore	Stroke	Power Factor*	A	B	C	D	E	F	G	H	J	K	L	M	N
P-75-1/2	3/4	1/2	.44	2 3/4	1/2	2	3/4	1/2 -20	1 3/32	11/16	1 1/4	1 5/8	1/4	3/16	39/64	1/4
P-75-1	3/4	1	.44	3 1/4	1	2 1/2	3/4	1/2 -20	1 3/32	11/16	1 1/4	1 5/8	1/4	3/16	39/64	1/4
P-75-2	3/4	2	.44	4 61/64	2	4 13/64	3/4	1/2 -20	1 3/32	11/16	1 1/4	1 5/8	1/4	3/16	39/64	1/4
P-75-3	3/4	3	.44	5 61/64	3	5 13/64	3/4	1/2 -20	1 3/32	11/16	1 1/4	1 5/8	1/4	3/16	39/64	1/4
P-100	1	5/8	.75	2 11/16	5/8	2 3/16	1/2	5/8 -18	1 3/8	13/16	1 5/8	2	5/16	3/16	9/16	1/2
P-100-1	1	1	.75	3 9/16	1	2 9/16	3/4	5/8 -18	1 3/8	13/16	1 5/8	2	5/16	3/16	9/16	1/2
P-100-2	1	2	.75	5 1/2	2	4 1/2	1	5/8 -18	1 3/8	13/16	1 5/8	2	5/16	3/16	9/16	1/2
P-100-3	1	3	.75	6 1/2	3	5 1/2	1	5/8 -18	1 3/8	13/16	1 5/8	2	5/16	3/16	9/16	1/2
P-110-1	1 1/8	1	1.00	3 5/16	1	2 1/2	3/4	5/8 -18	1 15/32	13/16	1 5/8	2	5/16	3/16	9/16	1/2
P-110-2	1 1/8	2	1.00	5 13/16	2	4 3/8	1	5/8 -18	1 15/32	13/16	1 5/8	2	5/16	3/16	9/16	1/2
P-110-3	1 1/8	3	1.00	6 13/16	3	5 3/8	1	5/8 -18	1 15/32	13/16	1 5/8	2	5/16	3/16	9/16	1/2
P-1251/2	1 1/4	1/2	1.225	3 1/16	1/2	2	1	7/8 -14	1 5/8	27/32	1 5/8	2	3/8	3/16	5/8	1/2
P-125-1	1 1/4	1	1.225	3 1/2	1	2 1/2	1	7/8 -14	1 5/8	27/32	1 5/8	2	3/8	3/16	5/8	1/2

Stock No.	Bore	Stroke	Power Factor*	A	B	C	D	E	F	K	L
V-75-1/2	3/4	1/2	.44	2 3/4	1/2	2	3/4	1/2 -20	7/8	1/4	3/8
V-75-1	3/4	1	.44	3 1/4	1	2 1/2	3/4	1/2 -20	7/8	1/4	3/8
V-75-2	3/4	2	.44	4 61/64	2	4 13/64	3/4	1/2 -20	7/8	1/4	3/8
V-75-3	3/4	3	.44	5 61/64	3	5 13/64	3/4	1/2 -20	7/8	1/4	3/8
V-100	1	5/8	.75	2 11/16	5/8	2 3/16	1/2	5/8 -18	1 1/4	5/16	5/8
V-100AC	1	5/8	.75	2 1/4	5/8	1 29/32	3/8	5/8 -18	1 1/4	5/16	3/8
V-100-1	1	1	.75	3 9/32	1	29/16	3/4	5/8 -18	1 1/4	5/16	5/8
V-100-2	1	2	.75	5 1/2	2	4 1/2	1	5/8 -18	1 1/4	5/16	5/8
V-100-3	1	3	.75	6 1/2	3	5 1/2	1	5/8 -18	1 1/4	5/16	5/8
V-110-1	1 1/8	1	1.00	3 5/16	1	2 1/2	3/4	5/8 -18	1 5/16	5/16	5/8
V-110-2	1 1/8	2	1.00	5 13/32	2	4 3/8	1	5/8 -18	1 5/16	5/16	5/8
V-110-3	1 1/8	3	1.00	6 13/32	3	5 3/8	1	5/8 -18	1 5/16	5/16	5/8
V-125-1/2	1 1/4	1/2	1.225	3 1/16	1/2	2	1	7/8 -14	1 1/2	3/8	5/8
V-125-1	1 1/4	1	1.225	3 1/2	1	2 1/2	1	7/8 -14	1 1/2	3/8	5/8

*Figures are theoretical. See chart on back cover.

Stock No.	Bore	Stroke	Power Factor*	A	B	C	D	E	F	G	H	J	K	L	M	N	P
DAP75-1/2	3/4	1/2	.44	3 13/64	5/32	2 29/64	3/4	1/2	1 3/32	11/16	1 1/4	1 5/8	1/4	5/16	39/64	1/2 -20	3/16
DAP75-1	3/4	1	.44	3 23/32	5/32	2 51/64	3/4	1	1 3/32	11/16	1 1/4	1 5/8	1/4	5/16	39/64	1/2 -20	3/16
DAP75-2	3/4	2	.44	4 3/4	5/32	3 51/64	3/4	2	1 3/32	11/16	1 1/4	1 5/8	1/4	5/16	39/64	1/2 -20	3/16
DAP75-3	3/4	3	.44	5 23/32	5/32	4 51/64	3/4	3	1 3/32	11/16	1 1/4	1 5/8	1/4	5/16	39/64	1/2 -20	3/16
DAP75-4	3/4	4	.44	6 23/32	5/32	5 51/64	3/4	4	1 3/32	11/16	1 1/4	1 5/8	1/4	5/16	39/64	1/2 -20	3/16
DAP100-1/2	1	1/2	.75	3 3/16	3/16	2 1/2	1/2	1/2	1 1/4	5/8	1 5/8	2	5/16	3/8	9/16	7/8 -14	3/16
DAP100-1	1	1	.75	4 1/4	1/8	3 1/16	1 1/8	1	1 3/8	3/4	1 5/8	2	5/16	3/8	9/16	7/8 -14	3/16
DAP100-2	1	2	.75	5 3/8	1/8	4 1/16	1 1/8	2	1 3/8	3/4	1 5/8	2	5/16	3/8	9/16	7/8 -14	3/16
DAP100-3	1	3	.75	6 3/8	1/8	5 1/16	1 1/8	3	1 3/8	3/4	1 5/8	2	5/16	3/8	9/16	7/8 -14	3/16
DAP100-4	1	4	.75	7 3/8	1/8	6 1/16	1 1/8	4	1 3/8	3/4	1 5/8	2	5/16	3/8	9/16	7/8 -14	3/16
DAP100-5	1	5	.75	8 3/8	1/8	7 1/16	1 1/8	5	1 3/8	3/4	1 5/8	2	5/16	3/8	9/16	7/8 -14	3/16
DAP100-6	1	6	.75	9 3/8	1/8	8 1/16	1 1/8	6	1 3/8	3/4	1 5/8	2	5/16	3/8	9/16	7/8 -14	3/16
DAP125-1	1 1/4	1	1.22	4 5/8	1/8	3 3/8	1	1	1 21/32	7/8	1 5/8	2	3/8	1/2	5/8	7/8	3/16
DAP125-2	1 1/4	2	1.22	5 5/8	1/8	4 3/8	1	2	1 21/32	7/8	1 5/8	2	3/8	1/2	5/8	7/8	3/16
DAP125-3	1 1/4	3	1.22	6 5/8	1/8	5 3/8	1	3	1 21/32	7/8	1 5/8	2	3/8	1/2	5/8	7/8	3/16

*Figures are theoretical. See chart on back cover.

Stock No.	Bore	Stroke	Power Factor*	A	B	C	D	E	F	G	H	J	K
DAV75-1/2	3/4	1/2	.44	3 13/64	5/32	2 29/64	3/4	1/2	7/8	7/16	7/16	1/2 -20	1/4
DAV75-1	3/4	1	.44	3 45/64	5/32	2 61/64	3/4	1	7/8	7/16	7/16	1/2 -20	1/4
DAV75-2	3/4	2	.44	4 45/64	5/32	3 61/64	3/4	2	7/8	7/16	7/16	1/2 -20	1/4
DAV75-3	3/4	3	.44	5 45/64	5/32	4 61/64	3/4	3	7/8	7/16	7/16	1/2 -20	1/4
DAV75-4	3/4	4	.44	6 23/32	5/32	5 61/64	3/4	4	7/8	7/16	7/16	1/2 -20	1/4
DAV100-1/2	1	1/2	.75	3 3/16	3/16	2 1/2	1/2	1/2	1 1/4	5/8	1/2	7/8 -14	5/16
DAV100-1	1	1	.75	4 1/4	1/8	3 1/16	1 1/8	1	1 1/4	5/8	1/2	7/8 -14	5/16
DAV100-2	1	2	.75	5 3/8	1/8	4 1/16	1 1/8	2	1 1/4	5/8	1/2	7/8 -14	5/16
DAV100-3	1	3	.75	6 3/8	1/8	5 1/16	1 1/8	3	1 1/4	5/8	1/2	7/8 -14	5/16
DAV100-4	1	4	.75	7 3/8	1/8	6 1/16	1 1/8	4	1 1/4	5/8	1/2	7/8 -14	5/16
DAV100-5	1	5	.75	8 3/8	1/8	7 1/16	1 1/8	5	1 1/4	5/8	1/2	7/8 -14	5/16
DAV100-6	1	6	.75	9 3/8	1/8	8 1/16	1 1/8	6	1 1/4	5/8	1/2	7/8 -14	5/16
DAV125-1	1 1/4	1	1.22	4 5/8	1/8	3 3/8	1	1	1 1/2	5/8	5/8	7/8 -14	3/8
DAV125-2	1 1/4	2	1.22	5 5/8	1/8	4 3/8	1	2	1 1/2	5/8	5/8	7/8 -14	3/8
DAV125-3	1 1/4	3	1.22	6 5/8	1/8	5 3/8	1	3	1 1/2	5/8	5/8	7/8 -14	3/8

SPECIFICATIONS

V75, V100, V110, DAV75, DAV100 - Brass Series

Cylinder Body/Tube Brass
 Cylinder Rods Zinc plated steel
 Stainless optional
 Piston seals Buna N V-packs
 standard Viton optional
 Cylinder End Caps Brass
 Operating Pressures 0-150 psi
 Air
 0-350 psi Hydraulic
 Stroke lengths V75=1 thru 3"
 V100=1/2 thru 3" V110=1 thru
 3" DAV75= 1/2 thru 4"

DAV100=1 thru 6"

Spring force Rate per inch: V100AC=7#

V100, V110-1=3.5#; V100 & V110-2, -3=2#

ROD END - OPTIONS

- Type 1 Plain rod end
- Type 2 External thread-see chart on back cover
- Type 3 Shoulder and external thread
- Type 4 Internal thread
- Type 5 Cut off or flush shafts

SPECIFICATIONS

V125, DAV125 Aluminum Series

Cylinder Body/Tube - Anodized aluminum
 Cylinder Rods-Zinc plated steel Stainless-optional
 Piston seals-V125-Buna N V-packs DAV125-Buna N O-rings Viton v-packs and O-rings-optional
 Cylinder End Caps-Anodized aluminum
 Operating Pressures-0-150 psi
 Air 0-350 psi Hydraulic
 Stroke Lengths-V125=1/2 thru 1" DAV125=1 thru 3"
 Spring Force-Rate per inch V125-1/2=15# V125-1=11#

ROD END - OPTIONS

- Type 1 - Plain rod end
- Type 2 - External thread-see chart on back cover
- Type 3 - Shoulder and external thread
- Type 4 - Internal thread
- Type 5 - Cut off or flush shafts
- Type 6 - Drill thru entire length of shaft

CONTROL VALVES

V SERIES VALVES—3-WAY & 4-WAY 2 & 3 POSITION

A COMPLETE SERIES OF AIR VALVES— 1/8", 1/4", 3/8", 1/2" NPT

VALVE TYPES

V3 = 3-way, Normally Closed & Normally Open
 V3 = Selector or Diverter
 V4 = 4-way, 2 Position, Single Inlet

V5 = 4-way, 2 Position, Dual Inlet
 V4...3P = 4-way, 3 Position, Single Inlet
 V5...3P = 4-way, 3 Position, Dual Inlet

DESIGN FEATURES

Anodized Aluminum Body one basic design permits use of different operators
 Electroless nickel plated spools
 Teflon coated Buna N seals standard Viton seals available
 Prelubed with Magnalube G for longevity in cycling
 Safety Foot Guard FG100 recommended
 Operating Pressures: Air 1/8", 1/4", 3/8" models 150 psi 1/2" model 120 psi
 Hydraulic all models 300 psi

Minimum Operating Pressures:

Standard Pilot single pilot, spring return 25 psi Double pilot 10 psi

Low Pressure Pilot single pilot, spring return 15 psi Double pilot 7 psi

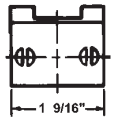
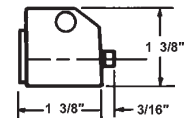
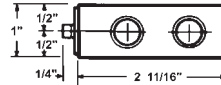
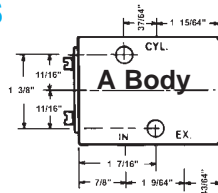
Cv Factors: 3-way: 1/8" & 1/4" npt 1.8 3/8" & 1/2" npt 2.9

4-way: 1/8" & 1/4" npt 1.8 3/8" & 1/2" npt 2.9

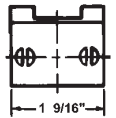
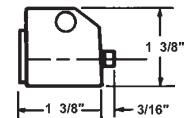
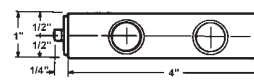
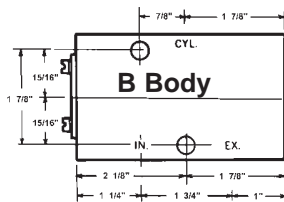
MOUNTING & DIMENSIONAL DATA – 3-WAY & 4-WAY, 2 POSITION VALVES

BASIC 3-WAY VALVES

1/8" & 1/4" npt

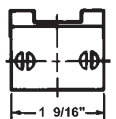
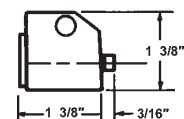
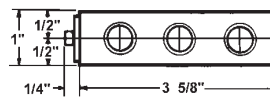
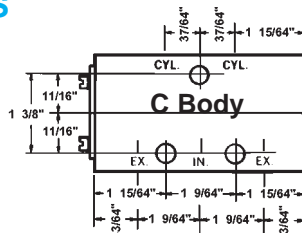


3/8" & 1/2" npt

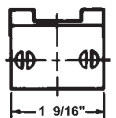
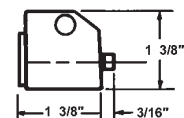
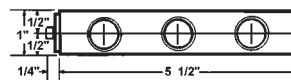
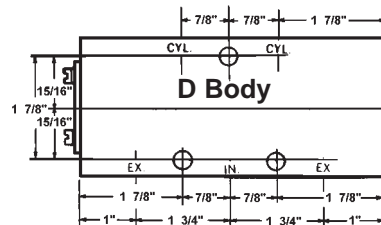


BASIC 4-WAY VALVES

1/8" & 1/4" npt



3/8" & 1/2" npt



ORDERING INFORMATION

V SERIES - MODEL NUMBERS (4 Digits)

Photos & drawings of our most frequently used control valves see pp. 20-29.

1st Digit

Type

- V3 = 3-Way
- V4 = 4-Way-2 pos.
- V5 = 4 Way-2 pos./Dual Inlet
- V4...3P = 4 Way-3 pos.
- V5...3P = 4 Way-3 pos.

V4

2nd Digit

Port Size

- 1 = 1/8" npt
- 2 = 1/4" npt
- 3 = 3/8" npt
- 4 = 1/2" npt

2

3rd & 4th Digit

Actuator/Return-2 position

- | | |
|-------------------------|------------------------|
| 00 = Basic/Spring | 08 = Pedal/Spring |
| 01 = Palm Button/Manual | 09 = Treadle/Manual |
| 02 = Palm Button/Spring | 10 = Treadle/Spring |
| 03 = Handball/Manual | 11 = Roller Cam/Spring |
| 04 = Handball/Spring | 12 = Ball Cam/Spring |
| 06 = Finger Tip/Spring | 15 = Double Pilot |
| | 16 = Single Pilot |

10

Example: V4210 = 4-Way, 2 pos. 1/4" single inlet treadle w/spring return.

Note: Modifications & some custom valve numbers can be created by combining primary model numbers with many of the below noted primary modifications.

PRIMARY MODIFICATIONS - 2 & 3 POSITION VALVES

Manual Control Valve Suffixes - 2 Position Valves

- | | | |
|------------------------------|-------------------------|-----------------------------------|
| A = Special mtg holes | IP - Low pressure pilot | S = Selector valve |
| D = Detent | NO = Normally open | T = Light duty spring |
| G = Heavy duty spring | P = Pilot return | V = Viton seals |
| H = Hydraulic (Low Pressure) | PM = Panel mount | X = X201 mufflers in ports |
| HD = Heavy duty actuator | R = Diverter valve | Y = Shorter hand ball assy. 3 OAL |

Manual Control Valve Suffixes 3 Position Valves

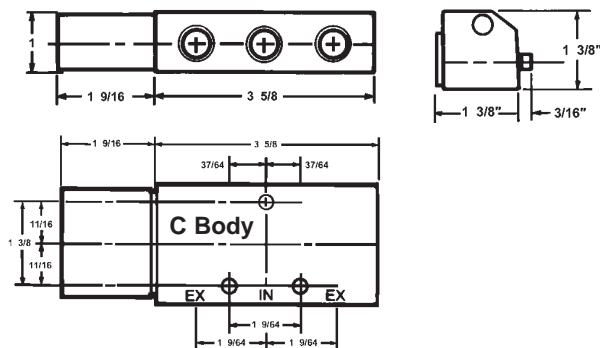
-To order 3 position valves, add the following suffix to 4-way, 2 pos. primary valve numbers

- | | |
|--|---|
| 3P = 3 position, closed center, spring to center | 3PD = 3 position, closed center, detented |
| 3PO = 3 position, open center, spring to center | 3POD = 3 position, open center, detented |

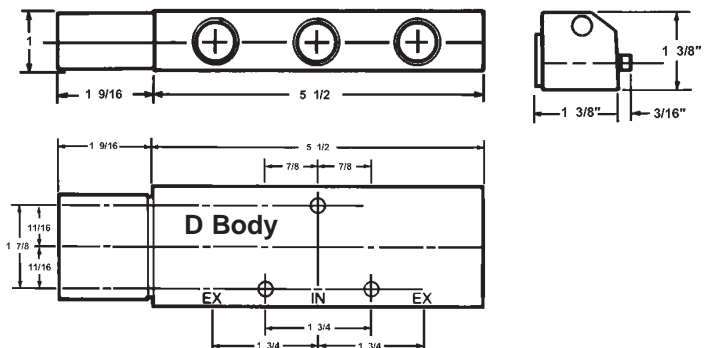
MOUNTING & DIMENSIONAL DATA - 4-WAY, 3 POSITION VALVES

Spring to center or detented, closed center or open center

1/8" & 1/4" npt



3/8" & 1/2" npt



V3 SERIES 3-WAY CONTROL VALVES

NORMALLY CLOSED & NORMALLY OPEN

3-WAY PALM BUTTON



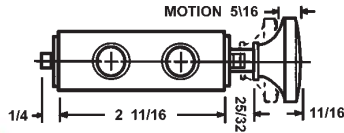
MANUAL
RETURN



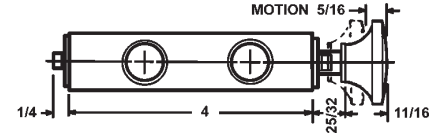
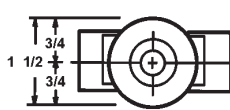
SPRING
RETURN



DETENT-



V3101 1/8", V3201 1/4"
NPT
(Manual Return)
V3102 1/8", V3202 1/4"

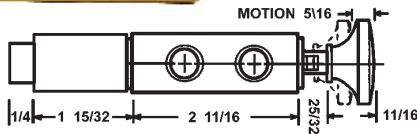


V3301 3/8", V3401 1/2"
NPT
(Manual Return)
V3302 3/8", V3402 1/2"

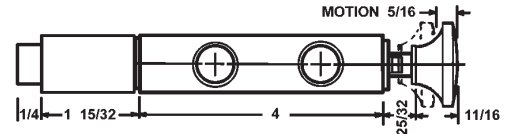
3-WAY PALM BUTTON-PILOT RETURN



PILOT
RETURN



V3101P 1/8", V3201P 1/4"
NPT



V3301P 3/8", V3401P 1/2"
NPT

3-WAY PANEL MOUNT



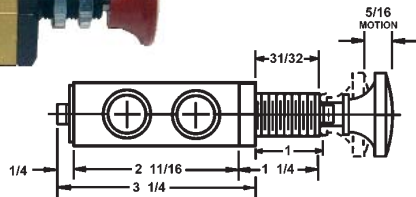
MANUAL
RETURN



SPRING
RETURN

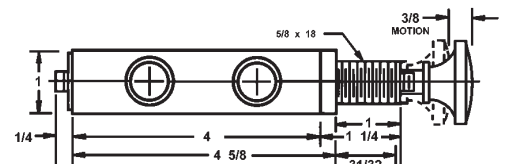


DETENT-



3-Way
V3101-PM 1/8"
(Manual)

V3102-PM 1/8"
(Spring)



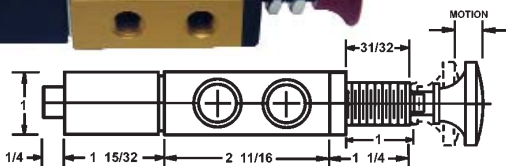
V3301-PM 3/8" (M)
V3302-PM 3/8" (S)

V3401-PM 1/2" (M)
V3402-PM 1/2" (S)

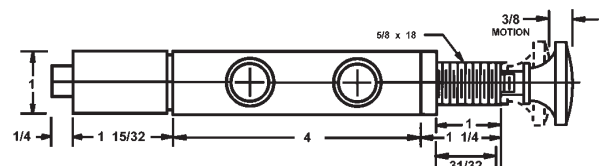
3-WAY PANEL MOUNT-PILOT RETURN



PILOT
RETURN



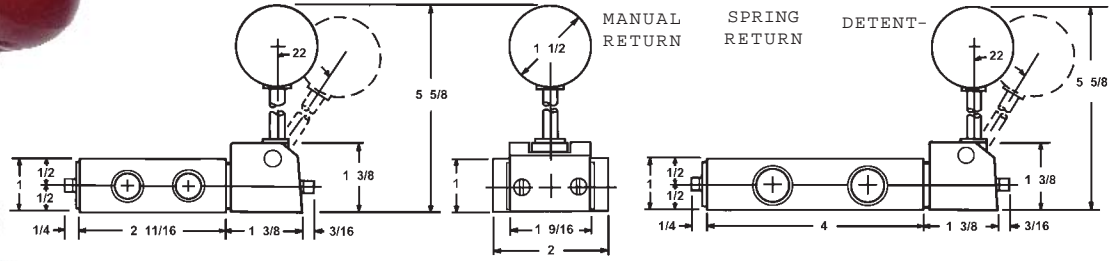
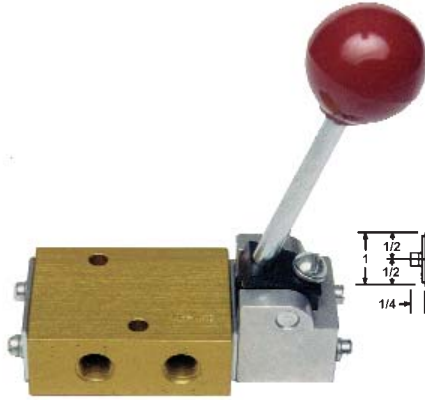
V3101-PMP 1/8" (Pilot
Return)



V3301-PMP 3/8" (PR)
V3401-PMP 1/2" (PR)

To order as Normally Open valves—
add NO suffix to part numbers

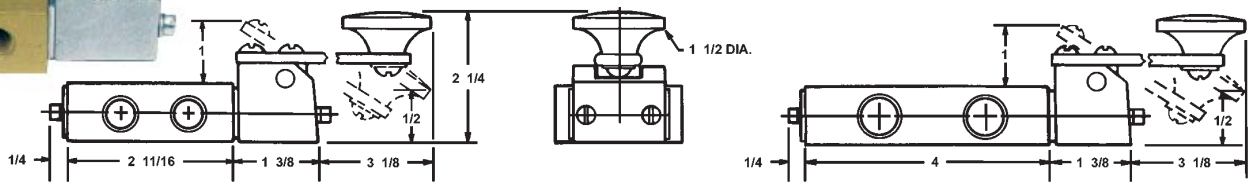
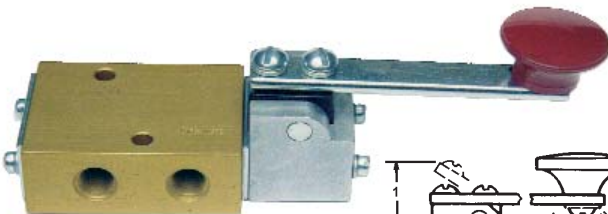
3-WAY HAND BALL VALVE



V3103 1/8", V3203 1/4"
NPT
(Manual Return)
V3104 1/8", V3204 1/4"

V3303 3/8", V3403 1/2"
NPT
(Manual Return)
V3304 3/8", V3404 1/2"

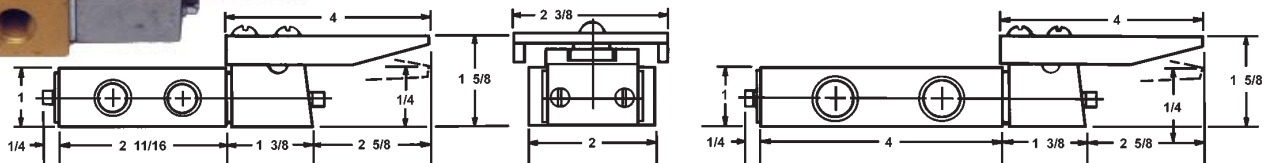
3-WAY FINGER VALVE



V3106 1/8", V3206 1/4"
NPT

V3306 3/8", V3406 1/2"
NPT

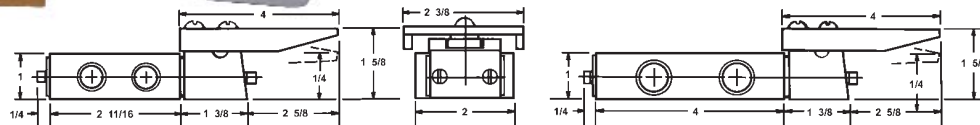
3-WAY PEDAL VALVE



V3108 1/8", V3208 1/4"
NPT

V3308 3/8", V3408 1/2"
NPT

3-WAY PEDAL-PILOT RETURN



V3108P1/8", V3208P1/4"

V3308P3/8", V3408P1/2"

WARNING: All hand and foot operated valves should be guarded to prevent accidental or unintended operation in accordance with OSHA Section 1910.217 and AIS Section B11.1.

*For peak efficiency lubrication of the valve is recommended.

V3 SERIES 3-WAY CONTROL VALVES

NORMALLY CLOSED & NORMALLY OPEN

1/8", 1/4", 3/8", 1/2" NPT

3-WAY TREADLE VALVE



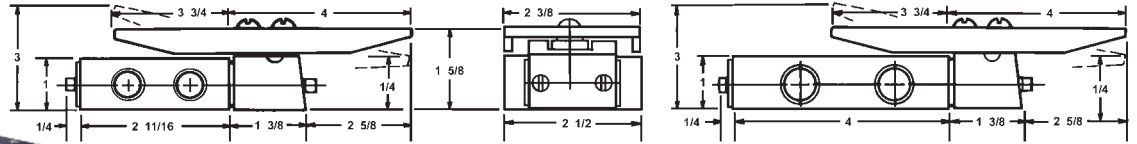
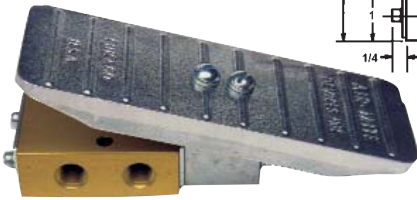
MANU-
AL



SPRING
RETUR



DETENT-



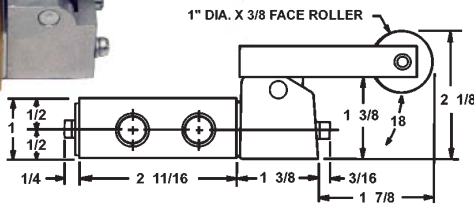
V3109 1/8", V3209 1/4"
NPT
(Manual Return)
V3110 1/8", V3210 1/4" NPT

V3309 3/8", V3409 1/2"
NPT
(Manual Return)
V3310 3/8", V3410 1/2"

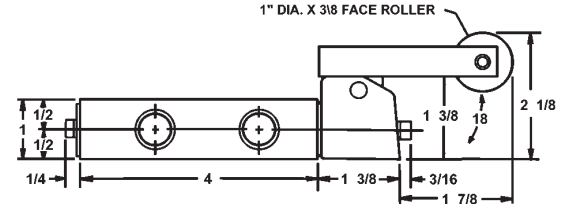
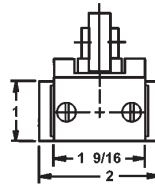
3-WAY ROLLER CAM



SPRING
RETURN

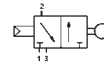


V3111 1/8", V3211 1/4" NPT
(Spring Return)

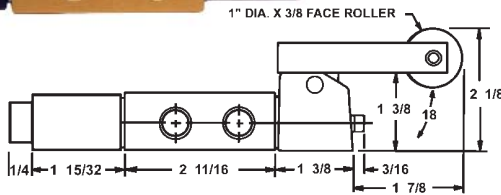


V3311 3/8", V3411 1/2" NPT
(Spring Return)

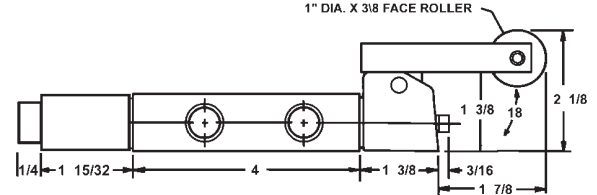
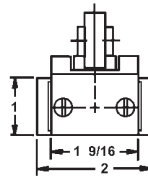
3-WAY ROLLER CAM-PILOT RETURN



PILOT
RETURN



V3111P 1/8", V3211P 1/4"
NPT

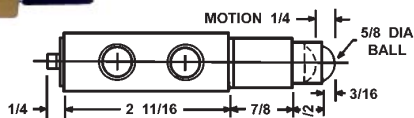


V3311P 3/8", V3411P 1/2"
NPT

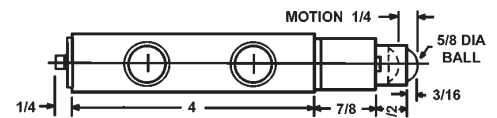
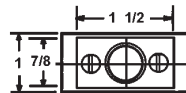
3-WAY BALL CAM



SPRING
RETURN



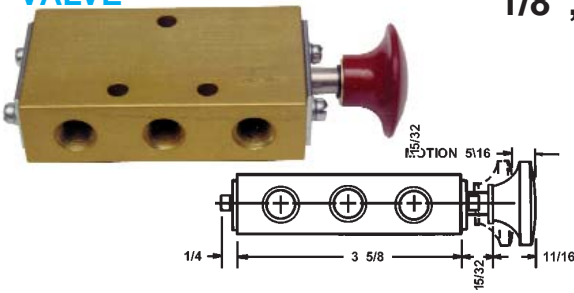
V3112 1/8", V3212 1/4" NPT
(Spring Return)



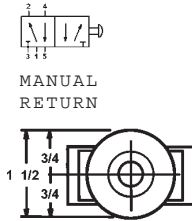
V3312 3/8", V3412 1/2"
NPT

AIR-MITE
DEVICES, INC.
4-WAY PALM BUTTON
VALVE

V4 & V5 SERIES
4-WAY CONTROL VALVES
2 POSITION SINGLE & DUAL INLET
1/8", 1/4", 3/8", 1/2" NPT



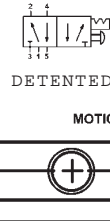
V4101 1/8", V4201 1/4" NPT
NPT (Manual Return)
V5101 1/8", V5201 1/4" V4102 1/8", V4202 1/4"



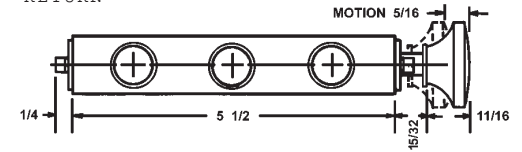
MANUAL
RETURN



SPRING
RETURN

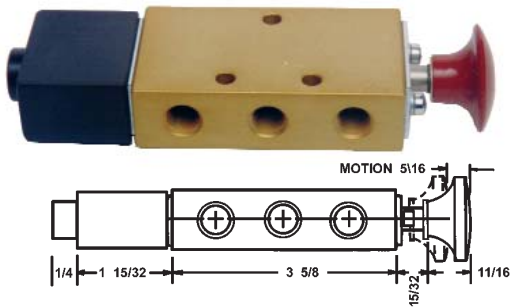


DETENTED

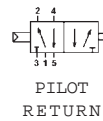
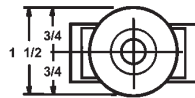


V4301 3/8", V4401 1/2" NPT
NPT (Manual Return)
V5301 3/8", V5401 1/2" V4302 3/8", V4402 1/2"

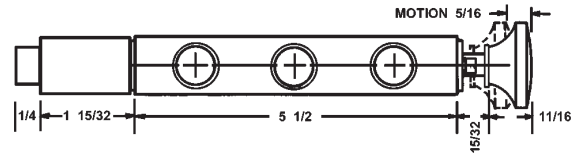
4-WAY PALM BUTTON-PILOT RETURN



V4101P 1/8", V4201P 1/4" NPT
V5101P 1/8", V5201P 1/4"

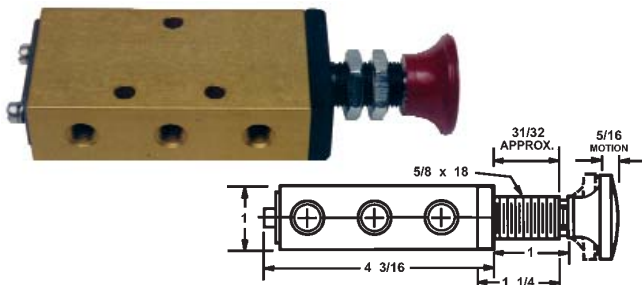


PILOT
RETURN

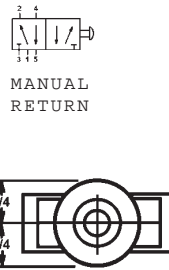


V4301P 3/8", V4401P 1/2" NPT
V5301P 3/8", V5401P 1/2"

4-WAY PANEL MOUNT VALVE



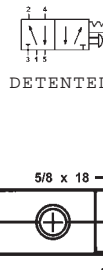
V4101-PM 1/8 (Manual) V4102-PM 1/8 (Spring)



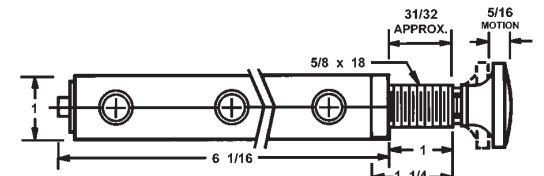
MANUAL
RETURN



SPRING
RETURN

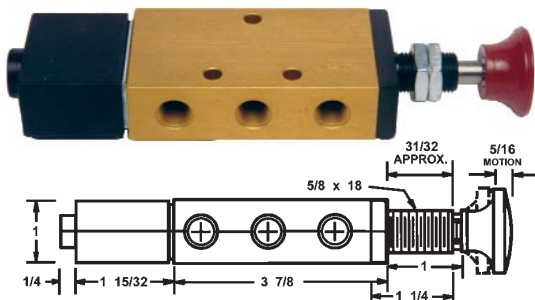


DETENTED

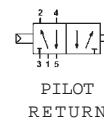


V4301-PM 3/8" (M) V4401-PM 1/2" (M)
V4302-PM 3/8" (S) V4402-PM 1/2" (S)

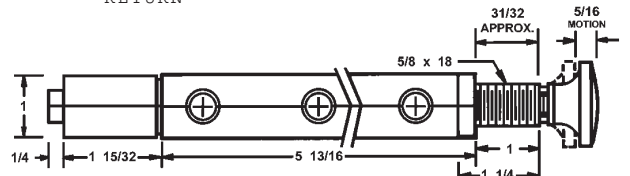
4-WAY PANEL MOUNT-PILOT RETURN



V4101-PMP 1/8 V4201-PMP 1/4"
P = Pilot (Air) Return



PILOT
RETURN

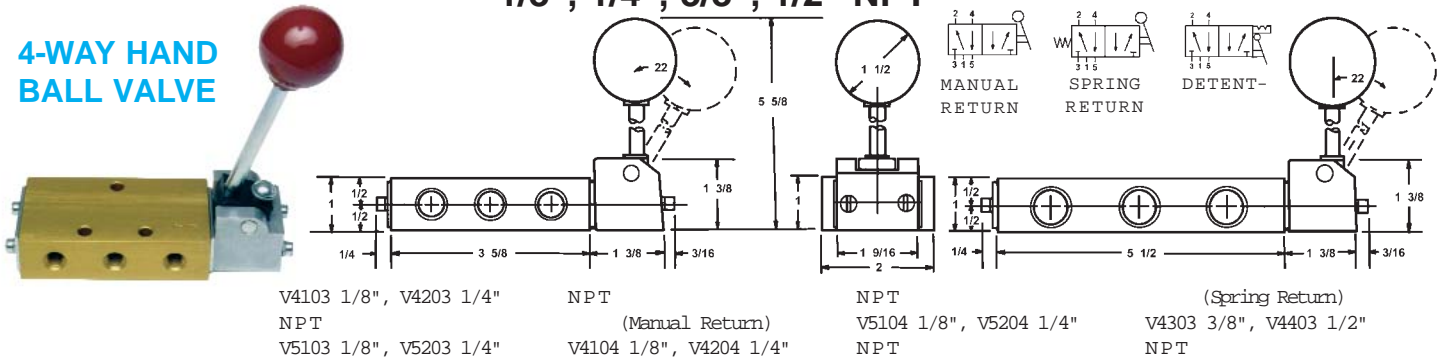


V4301-PMP 3/8" V4401-PMP 1/2"

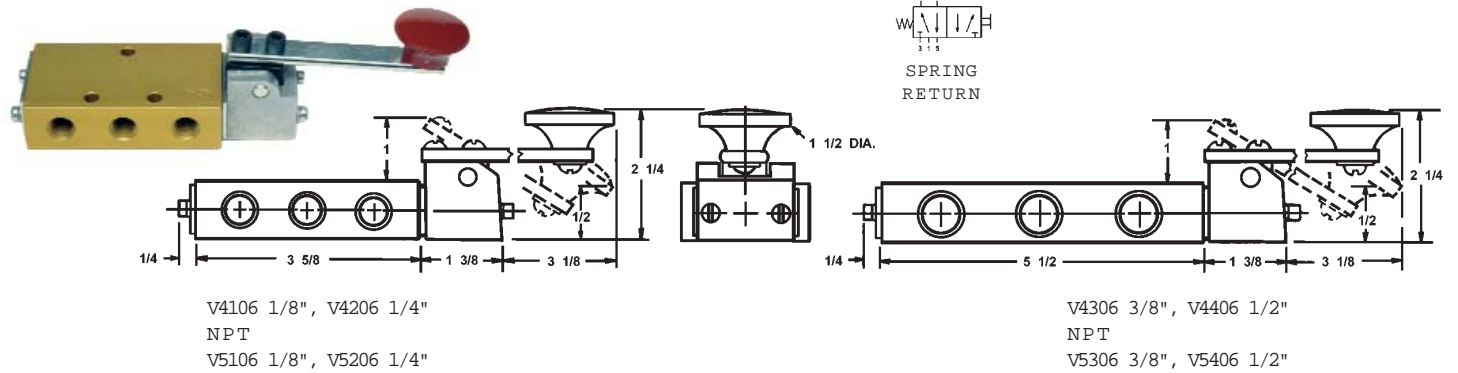
V4 & V5 SERIES 4-WAY CONTROL VALVES

2 POSITION SINGLE & DUAL INLET
1/8", 1/4", 3/8", 1/2" NPT

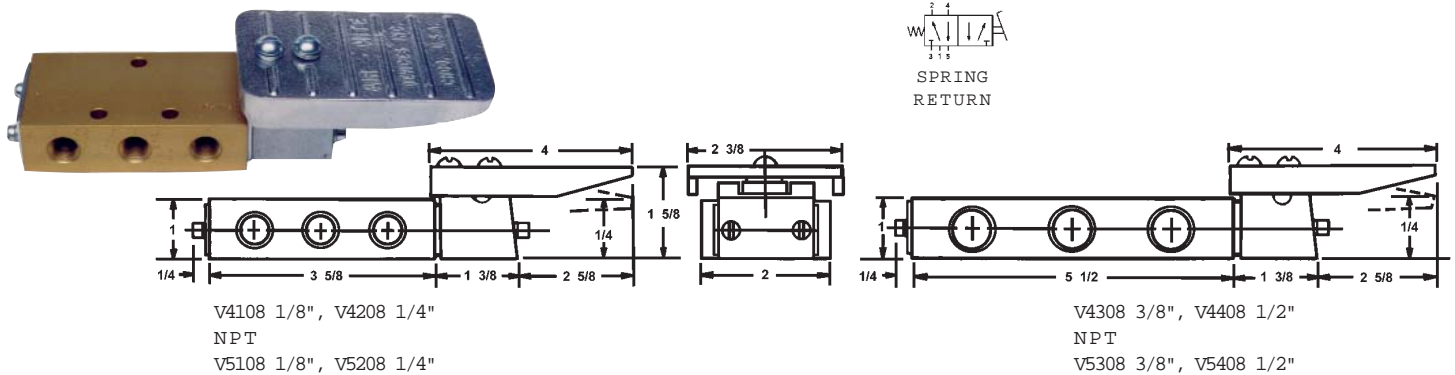
4-WAY HAND BALL VALVE



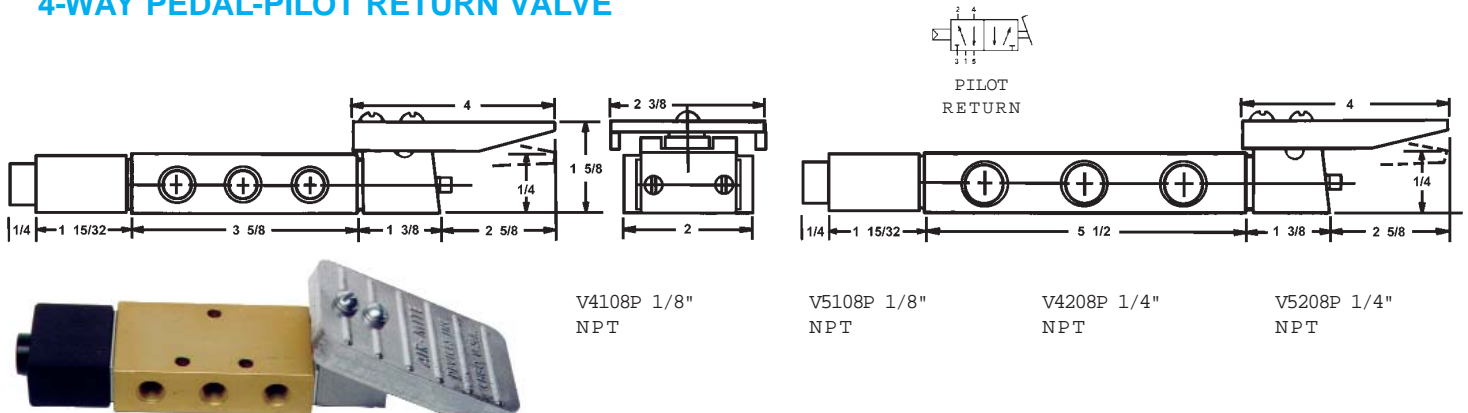
4-WAY FINGER VALVE



4-WAY PEDAL VALVE



4-WAY PEDAL-PILOT RETURN VALVE

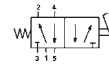


WARNING: All hand and foot operated valves should be guarded to prevent accidental or unintended operation in accordance with OSHA Section 1910.217 and AIS Section B11.1.

4-WAY TREADLE VALVE



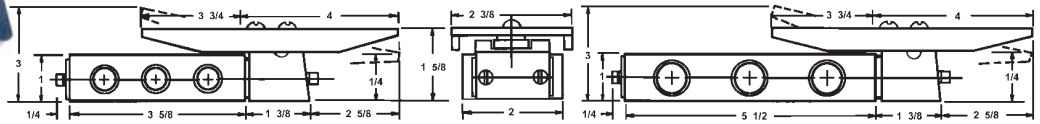
MANUAL
RETURN



SPRING
RETURN



DETENT-



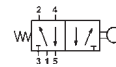
V4109 1/8", V4209 1/4"
NPT
V5109 1/8", V5209 1/4"

NPT
(Manual Return)
V4110 1/8", V4210 1/4"

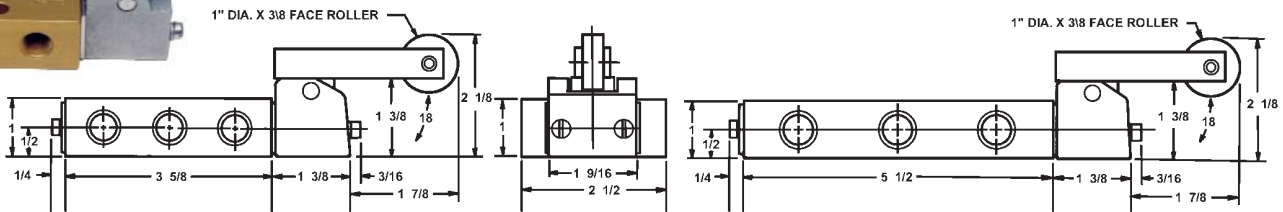
NPT
V5110 1/8", V5210 1/4"
NPT

(Spring Return)
V4309 3/8", V4409 1/2"
NPT

4-WAY ROLLER CAM VALVE



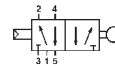
SPRING
RETURN



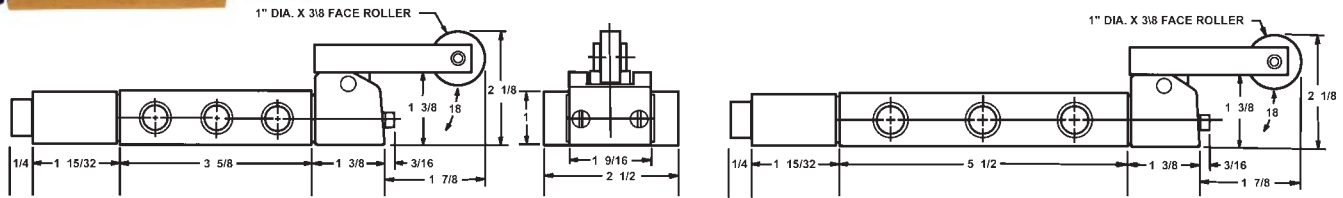
V4111 1/8", V4211 1/4"
NPT
V5111 1/8", V5211 1/4"

V4311 3/8", V4411 1/2"
NPT
V5311 3/8", V5411 1/2"

4-WAY ROLLER CAM-PILOT RETURN



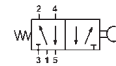
PILOT
RETURN



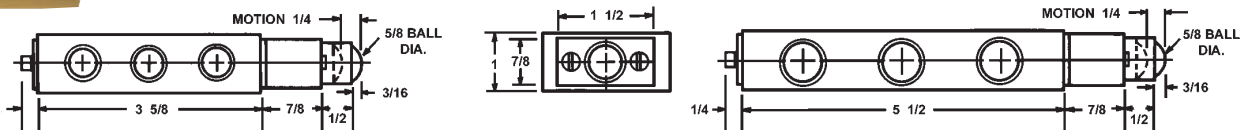
V4111P 1/8", V4211P 1/4"
NPT

V4311P 3/8", V4411P 1/2"
NPT

4-WAY BALL CAM VALVE



SPRING
RETURN



V4112 1/8", V4212 1/4"
NPT
V5112 1/8", V5212 1/4"

V4312 3/8", V4412 1/2"
NPT
V5312 3/8", V5412 1/2"

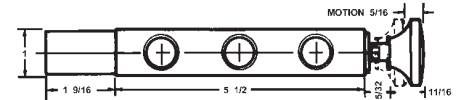
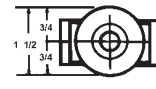
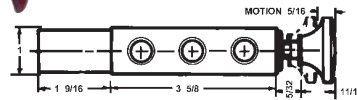
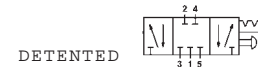
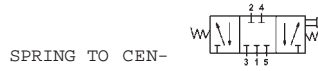
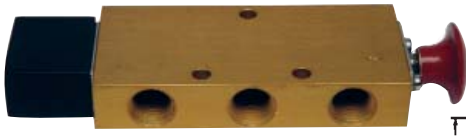
For Heavy Duty Actuators & Detented Actuators see p. 19 for "HD" & "D" suffixes.

V4-V5 SERIES 4-WAY, 3 POSITION VALVES SINGLE & DUAL INLET

CLOSED CENTER & OPEN CENTER

1/8", 1/4", 3/8", 1/2" NPT

4-WAY PALM BUTTON VALVE



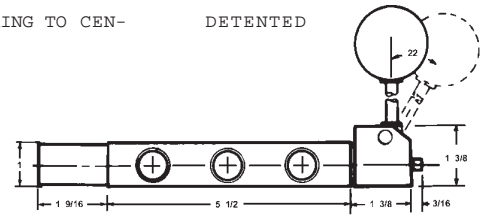
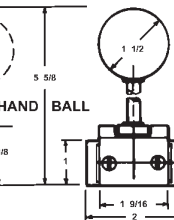
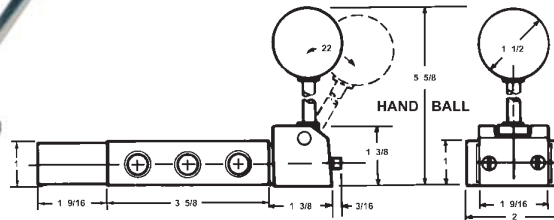
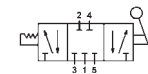
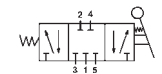
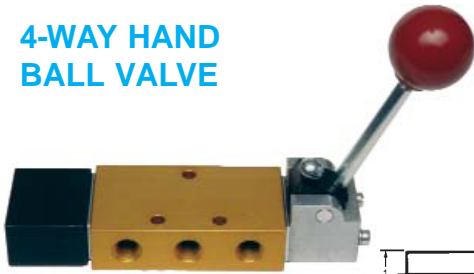
V4102-3P 1/8", V4202-3P 1/4"
NPT
(Spring Return to Center)
V5102-3P 1/8", V5202-3P 1/4"

NPT
(Spring Return to Center)
V4102-3PD 1/8", V4202-3PD 1/4"
NPT

(Detented)
V5102-3PD 1/8", V5202-3PD 1/4"
NPT
(Detented)

V4302-3P 3/8", V4402-3P 1/2"
NPT
(Spring Return to Center)
V5302-3P 3/8", V5402-3P 1/2"

4-WAY HAND BALL VALVE



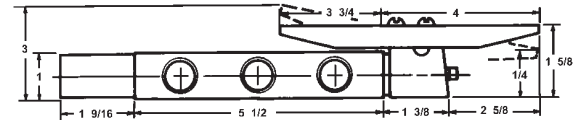
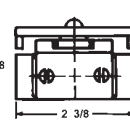
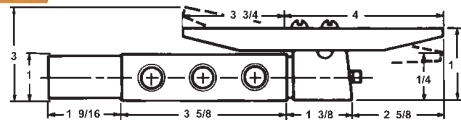
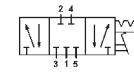
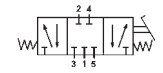
V4104-3P 1/8", V4204-3P 1/4"
NPT
(Spring Return to Center)
V5104-3P 1/8", V5204-3P 1/4"

NPT
(Spring Return to Center)
V4104-3PD 1/8", V4204-3PD 1/4"
NPT

(Detented)
V5104-3PD 1/8", V5204-3PD 1/4"
NPT
(Detented)

V4304-3P 3/8", V4404-3P 1/2"
NPT
(Spring Return to Center)
V5304-3P 3/8", V5404-3P 1/2"

4-WAY TREADLE VALVE



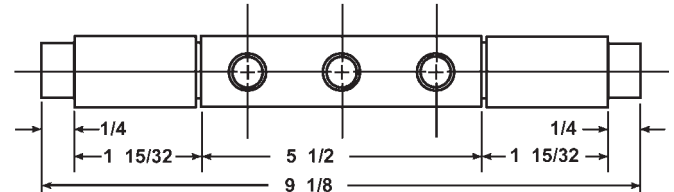
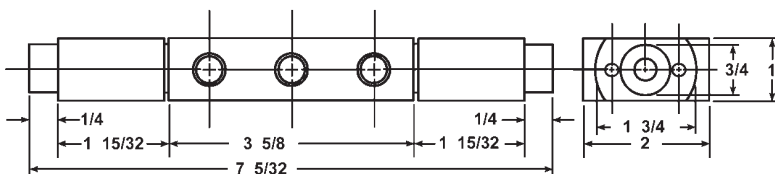
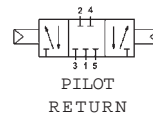
V4110-3P 1/8", V4210-3P 1/4"
NPT
(Spring Return to Center)
V5210-3P 1/8", V5210-3P 1/4"

NPT
(Spring Return to Center)
V4110-3PD 1/8", V4210-3PD 1/4"
NPT

(Detented)
V5110-3PD 1/8", V5210-3PD 1/4"
NPT
(Detented)

V4310-3P 3/8", V4410-3P 1/2"
NPT
(Spring Return to Center)
V5310-3P 3/8", V5410-3P 1/2"

4-WAY DOUBLE PILOT VALVE



V4115-3P 1/8", V4215-3P 1/4" NPT
(Pilot Return)

V4315-3P 3/8", V4415-3P 1/2" NPT
(Pilot Return)

SAFETY FOOT GUARD - FG100

The Air-Mite Safety Foot Guard provides protection against accidental tripping of foot operated, spring, manual, or pilot return valves. It can be used with all foot operated valves either 2-position or 3-position and with all port sizes 1/8", 1/4", 3/8", & 1/2" npt.

Shields & protects the valve body and actuator against damage

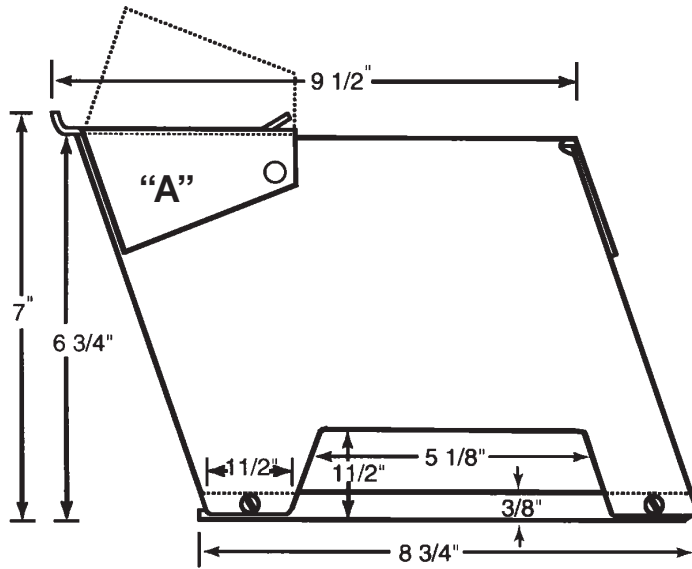
Sturdy, heavy all-steel construction withstands daily abuse in regular factory use.

May be bolted down for permanent type installations or moved about to various locations for convenient operation

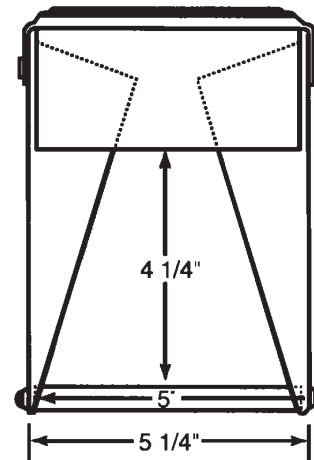
Adheres to OSHA Section 1910.217 & ANSI Section B11.1



MODEL FG 100
SAFETY FOOT GUARD



SIDE VIEW



REAR VIEW

* "A" – Flap articulates for easy entry.

INSTALLATION INSTRUCTIONS FOR SAFETY HAND & FOOT GUARD

- The bottom mounting plate of this safety hand & foot guard has two pairs of tapped mounting holes.
 - The smaller pair of holes - tapped 1/4-20 thread - are used for mounting any Air-Mite 1/8" or 1/4" NPT valve (i.e., any valves in V3100, V3200, V4100, V4200 series).
 - The larger pair of holes - tapped with 5/16-24 thread - are used for mounting any Air-Mite 3/8" or 1/2" NPT valve (i.e., any valves in the V3300, V3400, V4300, V4400 series).
- Rubber anti-skid bumpers denote bottom of the plate which should rest on the floor or other mounting base.
- Should any operator not be adequately protected by the hand & foot guard cover:
 - Simply remove screws from the mounting holes, turn bottom mounting plate 180°, and reassemble, or
 - Drill and tap new mounting holes in the bottom plate

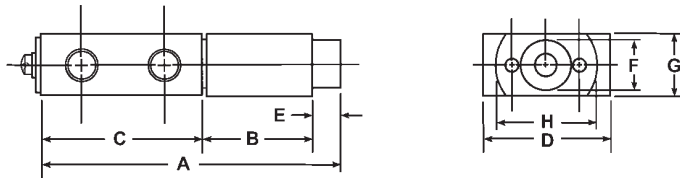
V3-V4 SERIES PILOT VALVES 3-WAY & 4-WAY, 2-POSITION SINGLE & DOUBLE PILOT

FEATURES

- Standard valves used with Series PC2500 & SC3000 Safety Controls
- Excellent for remote control, time cycles & sequence circuits
- Low silhouette design—efficient, trouble-free performance
- Differential pilot—available for all models

3 WAY SINGLE PILOT

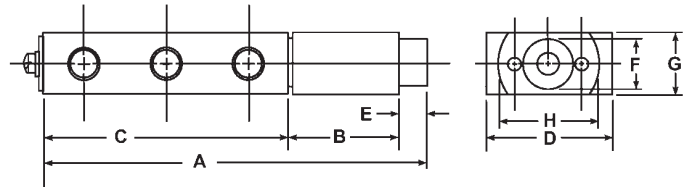
**SPRING RETURN
PILOT THREADED
1/8 NPT**



STOCK NO.	A	B	C	D	E	F	G	H	WEIGHT	HPT
V3116	4 15/32	1 15/32	2 11/16	2	1/4	3/4	1	1 3/4	.75lb.	1/8
V3216	4 15/32	1 15/32	2 11/16	2	1/4	3/4	1	1 3/4	.75lb.	1/4
V3316	5 13/16	1 15/32	4	2 1/2	1/4	3/4	1	1 3/4	1lb.	3/8
V3416	5 13/16	1 15/32	4	2 1/2	1/4	3/4	1	1 3/4	1lb.	1/2

4 WAY SINGLE PILOT

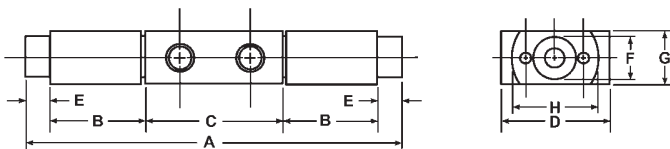
**SPRING RETURN
PILOT THREADED
1/8 NPT**



STOCK NO.	A	B	C	D	E	F	G	H	WEIGHT	HPT
V4116	5 13/32	1 15/32	3 5/8	2	1/4	3/4	1	1 3/4	.75lb.	1/8
V4216	5 13/32	1 15/32	3 5/8	2	1/4	3/4	1	1 3/4	.75lb.	1/4
V4316	7 9/32	1 15/32	5 1/2	2 1/2	1/4	3/4	1	1 3/4	1.5lbs.	3/8
V4416	7 9/32	1 15/32	5 1/2	2 1/2	1/4	3/4	1	1 3/4	1.5lbs.	1/2

3 WAY DOUBLE PILOT

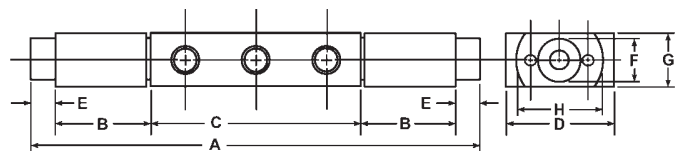
**PILOT RETURN
PILOT THREADED
1/8 NPT**



STOCK NO.	A	B	C	D	E	F	G	H	WEIGHT	HPT
V3115	6 9/32	1 15/32	2 11/16	2	1/4	3/4	1	1 3/4	1lb.	1/8
V3215	6 9/32	1 15/32	2 11/16	2	1/4	3/4	1	1 3/4	1lb.	1/4
V3315	7 19/32	1 15/32	4	2 1/2	1/4	3/4	1	1 3/4	1.5lbs.	3/8
V3415	7 19/32	1 15/32	4	2 1/2	1/4	3/4	1	1 3/4	1.5lbs.	1/2

4 WAY DOUBLE PILOT

**PILOT RETURN
PILOT THREADED
1/8 NPT**



STOCK NO.	A	B	C	D	E	F	G	H	WEIGHT	HPT
V4115	7 5/32	1 15/32	3 5/8	2	1/4	3/4	1	1 3/4	1lb.	1/8
V4215	7 5/32	1 15/32	3 5/8	2	1/4	3/4	1	1 3/4	1lb.	1/4
V4315	9 1/8	1 15/32	5 1/2	2 1/2	1/4	3/4	1	1 3/4	1.75lbs.	3/8
V4415	9 1/8	1 15/32	5 1/2	2 1/2	1/4	3/4	1	1 3/4	1.75lbs.	1/2

LOW PRESSURE PILOT—LP SERIES SINGLE & DOUBLE PILOT 3-WAY & 4-WAY 1/8", 1/4", 3/8", 1/2" NPT

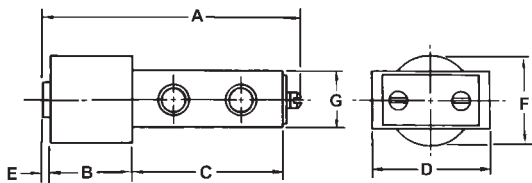
FEATURES

Minimum Operating Pressure Single pilot=15 psi Double pilot=7 psi

Note: Low pressure pilots can be supplied fully orificed for faster response

3 WAY SINGLE PILOT

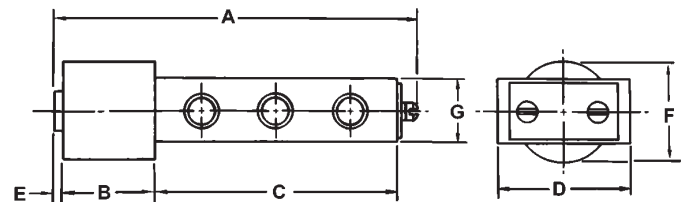
**SPRING RETURN
PILOT THREADED
1/8 NPT**



ED STOCK NO.	A	B	C	D	E	F	G	WEIGHT	THREAD-PARTS
V3116LP	4 1/2	1 3/8	2 11/16	2	3/16	1 1/2	1	1 1/2 lb	1/8 NPT
V3216LP	4 1/2	1 3/8	2 11/16	2	3/16	1 1/2	1	1 1/2 lb	1/4 NPT
V3316LP	5 7/8	1 3/8	4	2 1/2	3/16	1 1/2	1	1 1/2 lb	3/8 NPT

4 WAY SINGLE PILOT

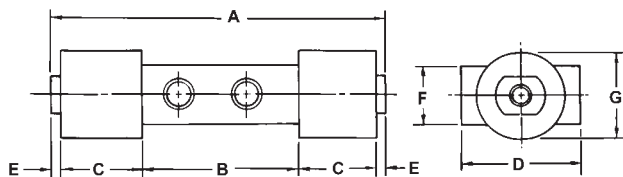
**SPRING RETURN
PILOT THREADED
1/8 NPT**



ED STOCK NO.	A	B	C	D	E	F	G	WEIGHT	THREAD-PARTS
V4116LP	5 1/2	1 3/8	3 5/8	2	3/16	1 1/2	1	1 1/2 lb	1/8 NPT
V4216LP	5 1/2	1 3/8	3 5/8	2	3/16	1 1/2	1	1 1/2 lb	1/4 NPT
V4316LP	7 3/8	1 3/8	5 1/2	2 1/2	3/16	1 1/2	1	1 1/2 lb	3/8 NPT

3 WAY DOUBLE PILOT

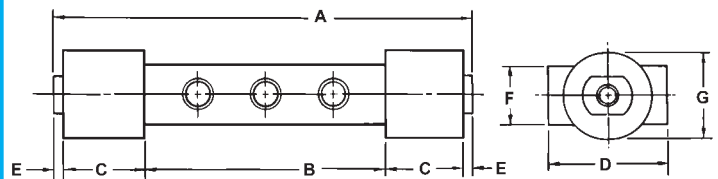
**PILOT RETURN
PILOT THREADED
1/8 NPT**



ED STOCK NO.	A	B	C	D	E	F	G	WEIGHT	THREAD-PARTS
V3115LP	5 13/16	2 11/16	1 3/8	2	3/16	1 1/2	1	3/4 lb	1/8 NPT
V3215LP	5 13/16	2 11/16	1 3/8	2	3/16	1 1/2	1	3/4 lb	1/4 NPT
V3315LP	7 3/16	4	1 3/8	2 1/2	3/16	1 1/2	1	1 1/4 lb	3/8 NPT

4 WAY DOUBLE PILOT

**PILOT RETURN
PILOT THREADED
1/8 NPT**



ED STOCK NO.	A	B	C	D	E	F	G	WEIGHT	THREAD-PARTS
V4115LP	6 1/4	3 5/8	1 3/8	2	3/16	1 1/2	1	1 1/2 lb	1/8 NPT
V4215LP	6 1/4	3 5/8	1 3/8	2	3/16	1 1/2	1	1 1/2 lb	1/4 NPT
V4315LP	8 5/8	5 1/2	1 3/8	2 1/2	3/16	1 1/2	1	1 3/4 lb	3/8 NPT

V3 & V4 SERIES 3-WAY & 4-WAY SOLENOID VALVES SINGLE & DOUBLE SOLENOID 1/8", 1/4", 3/8" & 1/2" NPT

FEATURES

Models: 3-Way Normally closed & Normally open
4-Way Single inlet, 2 position

Internally piloted valves

Operating Pressures: Single solenoid, spring ret 15-150psi
Double solenoid 7-150psi

Teflon coated Buna N Seals

Electroless nickel spools

Standard coils 120/60 & 240/60 many other voltages in stock

Explosion proof operators & high temp coils in stock

SPRING RETURN SOLENOID VALVE



DOUBLE SOLENOID VALVE



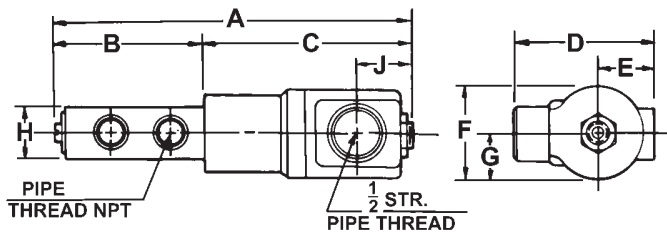
PILOT RETURN SOLENOID VALVE



Air-Mite solenoid valves are available in single solenoid, spring return, double solenoid, or pilot return. They are secondary pilot actuated and designed for pressures up to 150 psi air. These valves will operate as low as 7 psi on the double solenoid models and 15 psi on the single solenoid, spring return models.

Explosion proof operators are available at a slight extra cost. Add EX suffix when ordering.

All solenoids are available with external pilot options.

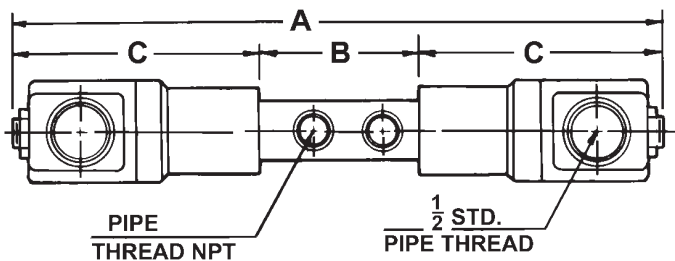


SOLENOID - SPRING RETURN - 3 WAY

STOCK NO.	A	B	C	D	E	F	G	H	J	Weight
V3113S 1/8	6 7/8	3	3 7/8	2 5/8	1	1 5/8	7/8	1	1 1/8	1 lb. 11 Oz.
V3213S 1/4	6 7/8	3	3 7/8	2 5/8	1	1 5/8	7/8	1	1 1/8	1 lb. 11 Oz.
V3313S 3/8	8 1/8	4 1/4	3 7/8	2 5/8	1 1/4	1 5/8	7/8	1	1 1/8	2 lbs.
V3413S 1/2	8 1/8	4 1/4	3 7/8	2 5/8	1 1/4	1 5/8	7/8	1	1 1/8	2 lbs.

SOLENOID - SPRING RETURN - 4 WAY

STOCK NO.	A	B	C	D	E	F	G	H	J	Weight
V4114S 1/8	7 3/4	3 7/8	3 7/8	2 5/8	1	1 5/8	7/8	1	1 1/8	1 lb. 13 Oz.
V4214S 1/4	7 3/4	3 7/8	3 7/8	2 5/8	1	1 5/8	7/8	1	1 1/8	1 lb. 13 Oz.
V4314S 3/8	9 3/4	5 3/4	3 7/8	2 5/8	1 1/4	1 5/8	7/8	1	1 1/8	2 1/4 lbs.
V4414S 1/2	9 3/4	5 3/4	3 7/8	2 5/8	1 1/4	1 5/8	7/8	1	1 1/8	2 1/4 lbs.

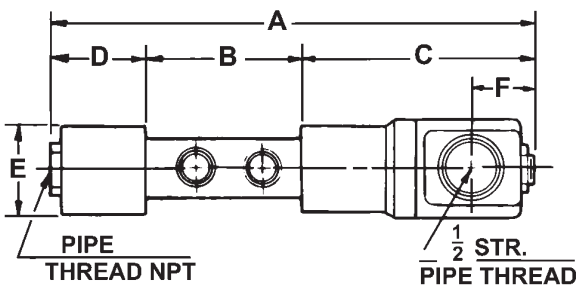


DOUBLE SOLENOID - 3 WAY

STOCK NO.	A	B	C	D	E	F	G	Weight
V3113SS 1/8	10 1/2	2 11/16	3 7/8	2 5/8	1	1 5/8	7/8	2 lbs. 6 Oz.
V3213SS 1/4	10 1/2	2 11/16	3 7/8	2 5/8	1	1 5/8	7/8	2 lbs. 6 Oz.
V3313SS 3/8	11 3/4	4	3 7/8	2 5/8	1	1 5/8	7/8	3 lbs.
V3413SS 1/2	11 3/4	4	3 7/8	2 5/8	1 1/4	1 5/8	7/8	3 lbs.

DOUBLE SOLENOID - 4 WAY

STOCK NO.	A	B	C	D	E	F	G	Weight
V4114SS 1/8	11 1/2	3 5/8	3 7/8	2 5/8	1	1 5/8	7/8	2 1/2 lbs.
V4214SS 1/4	11 1/2	3 5/8	3 7/8	2 5/8	1	1 5/8	7/8	2 1/2 lbs.
V4314SS 3/8	13 1/2	5 1/2	3 7/8	2 5/8	1 1/4	1 5/8	7/8	3 1/4 lbs.
V4414SS1/2	13 1/2	5 1/2	3 7/8	2 5/8	1 1/4	1 5/8	7/8	3 1/4 lbs.



SOLENOID - PILOT RETURN - 3 WAY

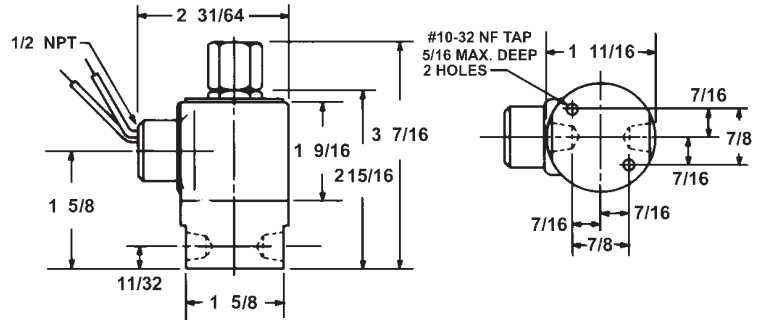
STOCK NO.	A	B	C	D	E	F	G	H	J	Weight
V3113SP 1/8	8 1/8	2 11/16	3 7/8	1 9/16	1	1 1/8	2 5/8	1 5/8	1	1 lb. 12 Oz.
V3213SP 1/4	8 1/8	2 11/16	3 7/8	1 9/16	1	1 1/8	2 5/8	1 5/8	1	1 lb. 12 Oz.
V3313SP 3/8	9 1/2	4	3 7/8	1 9/16	1	1 1/8	2 5/8	1 5/8	1 1/4	2 lbs.
V3413SP 1/2	9 1/2	4	3 7/8	1 9/16	1	1 1/8	2 5/8	1 5/8	1 1/4	2 lbs.

SOLENOID - PILOT RETURN - 4 WAY

STOCK NO.	A	B	C	D	E	F	G	H	J	Weight
V4114SP 1/8	9 1/8	3 5/8	3 7/8	1 9/16	1	1 1/8	2 5/8	1 5/8	1	2 lbs.
V4214SP 1/4	9 1/8	3 5/8	3 7/8	1 9/16	1	1 1/8	2 5/8	1 5/8	1	2 lbs.
V4314SP 3/8	11 1/16	5 1/2	3 7/8	1 9/16	1	1 1/8	2 5/8	1 5/8	1 1/4	2 1/2 lbs.
V4414SP 1/2	11 1/16	5 1/2	3 7/8	1 9/16	1	1 1/8	2 5/8	1 5/8	1 1/4	2 1/2 lbs.

S2 & S3 SERIES 2-WAY & 3-WAY 1/8" & 1/4" NPT PORTS NORMALLY CLOSED & NORMALLY OPEN

2 WAY
MODEL S 2-WAY
NORMALLY CLOSED



MODEL SO 2-WAY
NORMALLY OPEN



MODEL S VALVE SPECIFICATIONS

Two-way normally closed or normally open solenoid valves for air, steam, gas, water and oil. General purpose or safety application.

Leakage: bubble tight

Temperature: -45°F up to +185°F media and +77°F ambient

Operating speed: 600 CPM max

Life expectancy: millions of cycles depending on application, lubrication, etc.

Power consumption: 10 watts

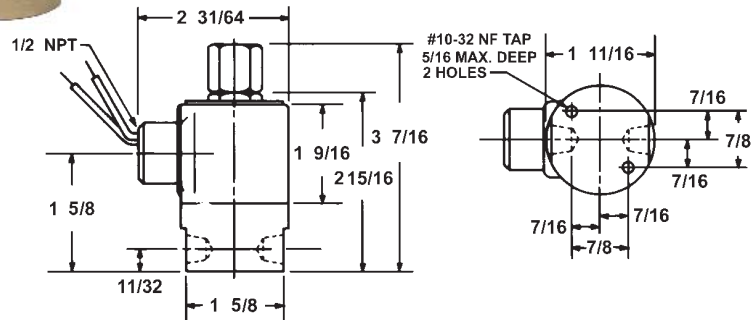
Duty cycles: continuous or intermittent

Material: body and interior parts are stainless steel

Coil currents: In Rush—260 milliamps

Burst pressure: 6000psi

3 WAY
MODEL S 3-WAY
EXHAUST TO ATMOSPHERE



MODEL S, SO, SD, SM 3-WAY
WITH PIPED EXHAUST



MODEL S, SO, SD, SM VALVE SPECIFICATIONS

Three-way solenoid valves for air, steam, gas, water and oil. General purpose or safety application.

Leakage: bubble tight

Temperature: -45°F up to +185°F media and +77°F ambient

Operating speed: 600 CPM max

Life expectancy: millions of cycles depending on application, lubrication, etc.

Power consumption: 10 watts

Duty cycles: continuous or intermittent

Material: body and interior parts are stainless steel

Burst pressure: 6000psi

Air-Mite Two- and Three-Way Solenoid valves are designed for air, steam, gas, water and oil in general purpose and safety use. Valves are bubble tight and have a built-in safety factor against leakage. Can operate at less than rated voltage when full pressure is applied. DIN connectors and/or Viton seals available upon request.

EXPLOSION PROOF VALVES AVAILABLE - Add "EX" suffix when ordering

	MAX. PRESSURE DIFF. PSI		ORIFICE SIZE		CV FACTOR	CONDUIT HOUSING		FLOW	
	A.C.	D.C.	INLET INCH	EXHAUST INCH		1/8 NPT PORTS	1/4 NPT PORTS	DE-ENERGIZED	ENERGIZED
MODEL S- 2-WAY NORMALLY CLOSED VALVES	250 200 125 100 75 50	250 200 125 100 50 25	3/64 1/16 3/32 1/8 5/32 3/16		.052 .095 .156 .214 .404 .500	S2110 S2120 S2130 S2140 S2150 S2160	S2210 S2220 S2230 S2240 S2250 S2260		
MODEL SO- 2-WAY-NORMALLY OPEN VALVES	235 150 100	235 150 100	3/64 1/16 3/32		.053 .095 .156	SO2110 SO2120 SO2130	SO2210 SO2220 SO2230		

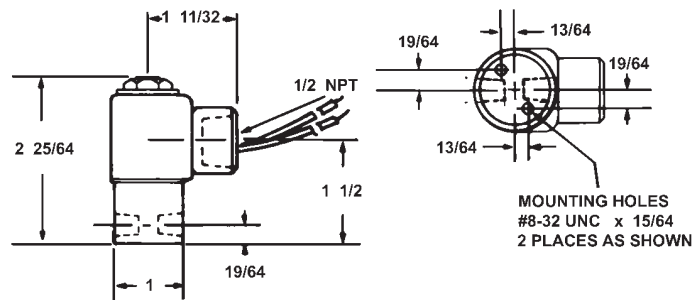
EXPLOSION PROOF VALVES AVAILABLE - Add "EX" suffix when ordering

	MAX. PRESS. DIFF. PSI		ORIFICE SIZE		CV FACTOR		CONDUIT HOUSING		FLOW	
	A.C. OR D.C.		INLET INCH	EXHAUST INCH	INLET	EXHAUST	1/8 NPT PORTS	1/4 NPT PORTS	DE-ENERGIZED	ENERGIZED
MODEL S- 3-WAY NORMALLY CLOSED VALVES -EXHAUST TO ATMOSPHERE	150 100 75 50 20		3/64 1/16 3/32 1/8 3/16	1/16 1/16 3/32 3/32 3/32	.052 .095 .156 .216 .500	.095 .095 .156 .156 .156	S3112 S3122 S3133 S3143 S3163	S3212 S3222 S3233 S3243 S3263		
MODEL S- 3-WAY NORMALLY CLOSED VALVES- PIPED EXHAUST	150 100 75 50 20		3/64 1/16 3/32 1/8 3/16	1/16 1/16 3/32 3/32 3/32	.052 .095 .156 .214 .500	.095 .095 .156 .156 .156	S3112E S3122E S3133E S3143E S3163E	S3212F S3222F S3233F S3243F S3263F		
MODEL SO - 3-WAY NORMALLY OPEN VALVES	150 100 75		3/64 1/16 3/32	1/16 1/16 1/8	.052 .095 .156	.095 .095 .214	SO3112 SO3122 SO3134	SO3212 SO3222 SO3234		
MODEL SD - DIRECTIONAL CONTROL VALVES	235 200 150 100		3/64* 1/16* 1/16* 3/32*	3/64 3/64 1/16 3/32	.052* .095* .095* .156*	.052 .052 .095 .156	SD3111 SD3121 SD3122 SD3133	SD3211 SD3221 SD3222 SD3233		
MODEL SM- 3-WAY MULTI-	150 100		3/64 1/16	3/64 1/16	.052 .095	.052 .095	SM3111 SM3122	SM3211 SM3222		

*Normally closed orifice

S5 SERIES - MINIATURE 2-WAY & 3-WAY SOLENOIDS NORMALLY CLOSED AND NORMALLY OPEN 1/8" NPT PORTS

2 WAY
MODEL S 2-WAY
NORMALLY CLOSED



MODEL SO 2-WAY
NORMALLY OPEN



MODEL S VALVE SPECIFICATIONS

Two-way normally closed or normally open solenoid valves for air, steam, gas, water and oil. General purpose or safety application.

Leakage: bubble tight

Temperature: -45°F up to +185°F media and +77°F ambient

Operating speed: 600 CPM max

Life expectancy: millions of cycles depending on application, lubrication, etc.

Power consumption: 10 watts

Duty cycles: continuous or intermittent

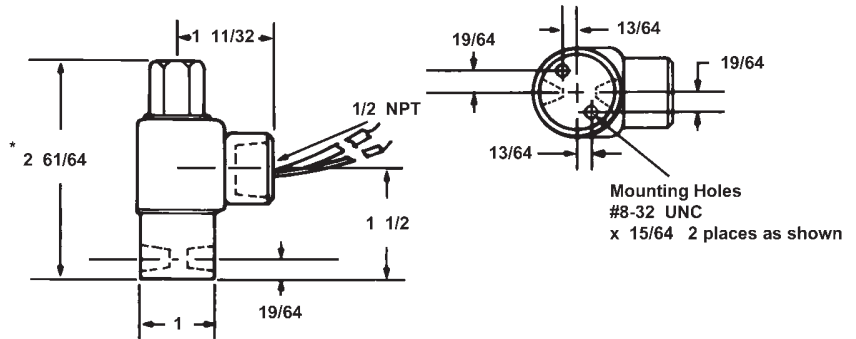
Material: body and interior parts are stainless steel

Coil currents: In Rush—260 milliamps
Holding—165 milliamps

Burst pressure: 6000psi

Coil construction: molded and non-molded

3 WAY
MODEL S 3-WAY
EXHAUST TO ATMOSPHERE



*Add .232 for Spade Terminal Coil Option

MODEL S, SO, SD, SM 3-WAY
WITH PIPED EXHAUST



MODEL S, SO, SD, SM VALVE SPECIFICATIONS

Three-way solenoid valves for air, steam, gas, water and oil. General purpose or safety application.

Leakage: bubble tight

Temperature: -45°F up to +185°F media and +77°F ambient

Operating speed: 600 CPM max

Life expectancy: millions of cycles depending on application, lubrication, etc.

Power consumption: 10 watts

Duty cycles: continuous or intermittent

Material: body and interior parts are stainless steel

Burst pressure: 6000psi

Coil construction: molded and non-molded

Air-Mite Two- and Three-Way Solenoid valves are designed for air, steam, gas, water and oil in general purpose and safety use. Valves are bubble tight and have a built-in safety factor against leakage. Can operate at less than rated voltage when full pressure is applied. DIN connectors and/or Viton seals available upon request.

EXPLOSION PROOF VALVES AVAILABLE - Add "EX" suffix when ordering

	MAX. PRESSURE DIFF. PSI		ORIFICE SIZE		CV FACTOR	CONDUIT HOUSING 1/8 NPT PORTS	FLOW	
	A.C.	D.C.					DE-ENERGIZED	ENERGIZED
MODEL S- 2-WAY NORMALLY CLOSED VALVES	500 400 200 100 75	250 150 100 45 25	1/32 3/64 1/16 3/32 1/8		.022 .055 .075 .156 .230	S5110 S5120 S5130 S5140 S5160		

MODEL SO- 2-WAY NORMALLY OPEN VALVES	400 200 125	200 100 60	1/32 3/64 1/16		.020 .048 .075	SO5110 SO5120 SO5130		
--	-------------------	------------------	----------------------	--	----------------------	----------------------------	--	--

EXPLOSION PROOF VALVES AVAILABLE - Add "EX" suffix when ordering

	MAX. PRESSURE DIFF. PSI		ORIFICE SIZE		CV FACTOR		CONDUIT HOUSING 1/8 NPT PORTS	FLOW	
	A.C.	D.C.	INLET INCH	EXHAUST INCH	INLET	EXHAUST		DE-ENERGIZED	ENERGIZED
MODEL S- 3-WAY NORMALLY CLOSED VALVES- EXHAUST TO ATMOSPHERE	200 150 100 60 30	200 150 100 60 30	1/32 3/64 1/16 3/32 1/8	1/32 1/16 1/16 1/16 1/16	.022 .055 .075 .156 .230	.020 .075 .075 .075 .075	S5310 S5320 S5330 S5340 S5360		
MODEL S- 3-WAY NORMALLY CLOSED VALVES PIPED EXHAUST	200 150 100 60 30	200 150 100 60 30	1/32 3/64 1/16 3/32 1/8	1/32 1/16 1/16 1/16 1/16	.022 .055 .075 .156 .230	.020 .075 .075 .075 .075	S5310E S5320E S5330E S5340E S5360E		
MODEL SO- 3-WAY NORMALLY OPEN VALVES	150 100 75	150 75 45	1/32 1/16 1/16	1/32 1/16 1/32	.020 .075 .075	.022 .075 .156	SO5320 SO5340 SO5360		
MODEL SM- 3-WAY MULTI- PURPOSE VALVES	125 100 65	125 100 50	1/32* 3/64* 1/16*	1/32 3/64 1/16	.022 .055 .075	.020 .048 .075	SM5320 SM5340 SM5360		

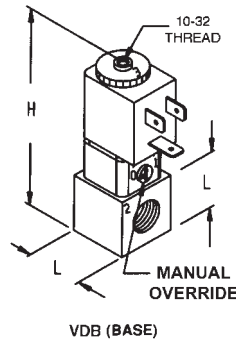
*Normally closed orifice

VDB SERIES - 2-WAY & 3-WAY SOLENOID VALVES

INDIVIDUAL & MANIFOLDED 1/8" & 1/4" NPT INLETS



VDB-01
SINGLE VALVE



FEATURES:

- 1/8" & 1/4" npt ports available
- NEMA 4 Solenoid operators
- Viton seals standard
- Manual override standard
- Plug in coils—quick installation/easy rotation
- Large voltage selection—including low wattage
- Pressure Range: Vacuum to 150 psi
- Hard coat anodized aluminum body & stainless steel internals
- Cord connectors available—see following page

DIMENSIONS MM/INCH-

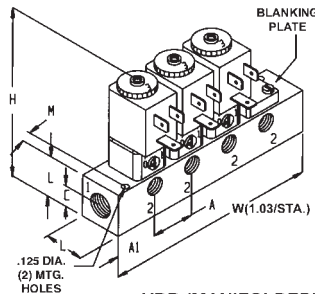
SERIES	H	L
VDB	77,8	25,4
	3.06	1.00

ELECTRICAL CHARACTERISTICS (Standard Coils)

VOLTAGE AC	CURRENT (AMP)		RESISTANCE OHMS	
	INRUSH	HOLDING		
22/50	24/60	.445	.34	26
110/50	120/60	.094	.069	600
220/50	240/60	.05	.04	2400
VOLTAGE DC				
12 VDC		.462	.462	26
24 VDC		.25	.25	96
120 VDC		.052	.052	2400



VDB-04
MANIFOLDED



DIMENSIONS INCHES

SERIES	A	C	H	H1	L	W	M
VDB	1.03	0.44	3.06	-	1.00	1.03	0.31

FEATURES:

- 2 thru 8 Stage manifolds available
- Fully assembled, ready for immediate use
- 1/4" npt inlets, 1/8" npt outlets
- Manual override standard
- 1" centers
- Choice of DIN or 12" leads in lge selection of voltages
- Blanking plate available as required

NOTE: For manifolds beyond 8 Stage or for special configurations, consult factory.

HOW TO ORDER

Individual & Manifold Valve

(1) Series	(2) # of Stations	(3) Port Size	(4) Body Type	(5) Voltages	(6) Options
VDB	01=individual valve	1=1/8" npt	2NC=2 way NC	SS=120/60AC	4=10-32 to 1/8" adapter
	02=2 station	2=1/4" npt	2NO=2 way NO	TT=240/60AC	5=Ex mufflers
	03=3 station		3NC=3 way NC	UU=24 v AC	6=12" leads
	04=4 station		3NO=3 way NO	VV=6 v DC	7=Indicator light
	05=5 station			XX=12 v DC	8=Blanking plate
	06=6 station			YY=24 v DC	
	07=7 station				
	08=8 station				

Note: Consult factory for ordering manifolds beyond 8 station models.

Note: On NO models, exhaust port becomes air inlet.

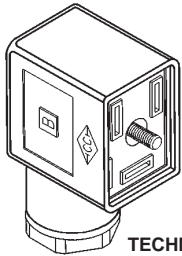
Example:

(1) Series	(2) # of Stations	(3) Port Size	(4) Body Type	(5) Voltages	(6) Options
VDB	01	1	3NC	SS	6
VDB	04	1	3NO	YY	

Sample model number to order: VDB-01-1-3NC-SS-6 (Individual valve with 1/8" ports)
VDB-04-1-3NO-YY (Manifolded valve)

Note: 3-5-7 Station manifolds will be assembled with next larger size body & with Blanking Plate (Option #8).

CONNECTORS FOR VDB SERIES VALVES



Mini Strain Relief Connector (MSR)

Connectors for VDB Series Valve - All connectors are used by general industry as self-contained junction boxes. Simple installation. Quick disconnect design permits easy installation and service. Lighted version provides visual indication of energized state.

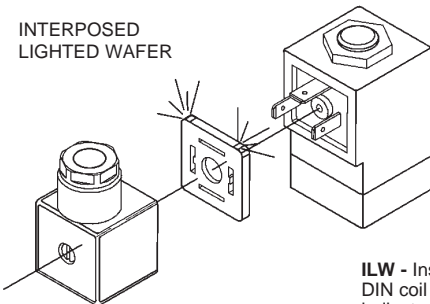
TECHNICAL DATA

Color: Black or translucent (lighted version)
Rated Voltage Max: 300VDC/250 VAC 50/60 HZ
Maximum Approved Current: 10 Amps
Meets NEMA 4 Classification:

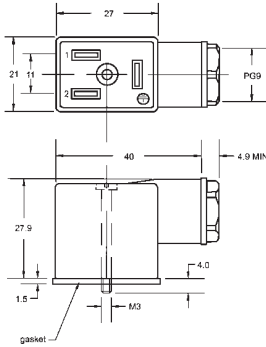
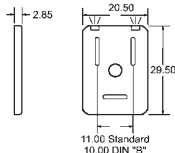
MODEL NUMBERS

MSR 1 - Unlighted, unwired version (for user wiring)
MSR 2 - Lighted version for 6-48 VDC, unwired
MSR 3 - Lighted version for 100-240 VAC, unwired

INTERPOSED
LIGHTED WAFER



ILW - Install between DIN coil & connector - indicates energized state



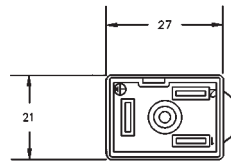
MODEL NUMBERS

ILW12 - 12-24 VDC/VAC 50/60 HZ
ILW120 - 120 - VAC 50/60 HZ
ILW240 - 240 - VAC 50/60 HZ

Interface Type	DIMENSIONS			
	A	B	C	D
Mini Standard	2.38	20.50	29.56	11.00

DIMENSIONAL DATA
ALL DIMENSIONS ARE MILLIMETERS UNLESS OTHERWISE NOTED

Mini molded Connectors (MMC) with Pre-wired Cables

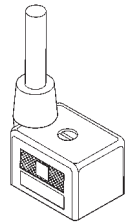
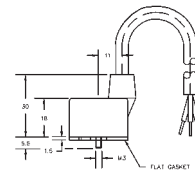


TECHNICAL DATA

Cable outlet molded-in: 3' or 67' lengths
Wire Gauge: 18 AWG
Color: Black
Rated Voltage Max: 250 VAC/300 VAC
Rated Current Max: 10 Amps
NEMA 4 Classification: Dustproof & Water Resistant
Maximum Rated Temp for Standard

MODEL NUMBERS

MMC300U - molded with 3' cables, unlighted
MMC300 - molded with 3' cables, lighted 6-48 VDC/VAC 50/60 HZ
MMC600U - molded with 6' cables, unlighted
MMC600 - molded with 6' cables, lighted 100-240 VAC 50/60 HZ



OTHER CONNECTORS

Micro Circuit Relays (MCR)
Micro Latching Connectors (MLC)
Micro Protective Connectors

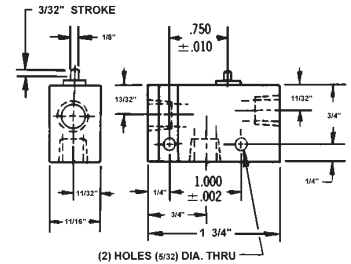
Consult factory for more information on these useful connectors.

MV2 SERIES - 3-WAY MINIATURE CONTROL VALVES

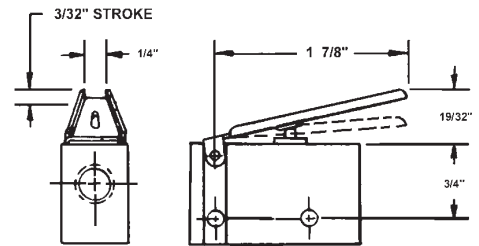
FEATURES

- Normally Closed & Normally Open
- Snap Action response
- Pressure Range: 30-150 psi
- Rugged aluminum die-cast body
- Stainless steel spools—standard
- Buna N seals—teflon coated
- Mounting holes on standard 1" centers

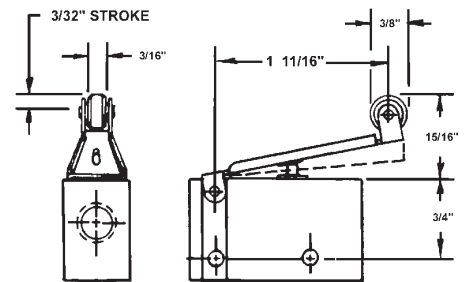
MV2-A BASIC VALVE



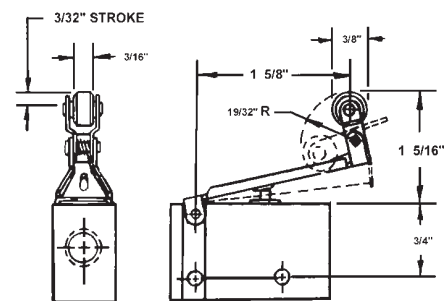
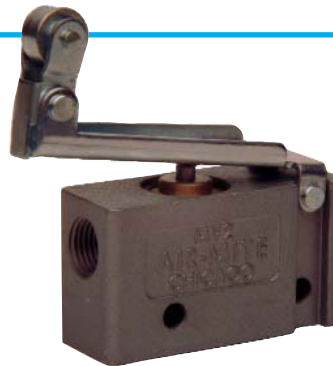
MV2-B LEVER



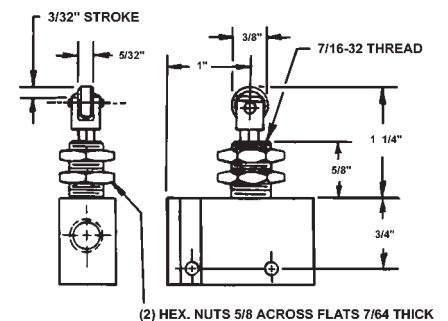
MV2-C ROLLER LEAF



MV2-D ONE WAY ROLLER LEAF



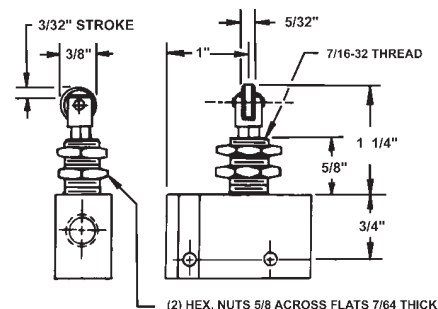
MV2-E ROLLER PLUNGER (Panel Mounted)



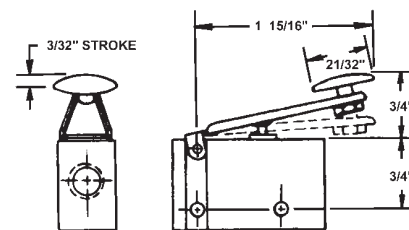
(2) HEX. NUTS 5/8 ACROSS FLATS 7/64 THICK

Air-Mite's Model MV2 Series offers 3-way miniature valves in normally closed or normally open styles. The valve body is rugged die cast aluminum. Valves are easily repaired in the field by simply removing the snap ring in the center section & replacing the o-ring seals. MV2 miniature valves have the same mounting centers as electrical switches and all ports are tapped 1/8" npt.

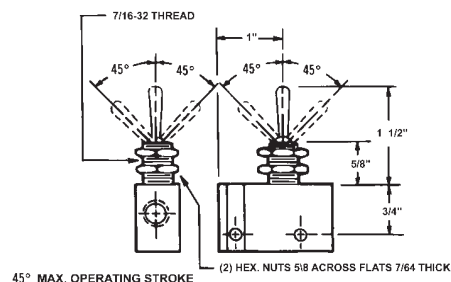
MV2-F CROSS ROLLER PLUNGER
(Panel Mounted)



MV2-G FINGERTIP LEVER

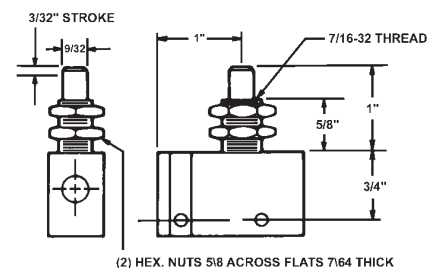


MV2-H TOGGLE
(45° Any Direction)
(Panel Mounted)

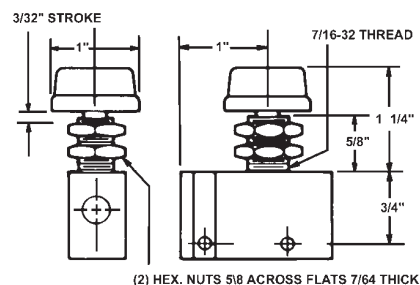


MV2-L STRAIGHT LINE TOGGLE
(45°—Two Directions)
(Panel Mounted)

MV2-J PLUNGER
(Panel Mounted)



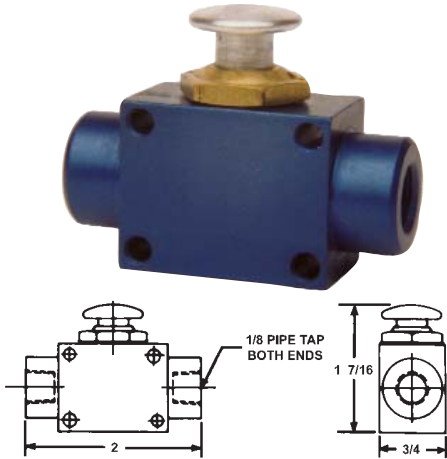
MV2-K KNOB
(Panel Mounted)



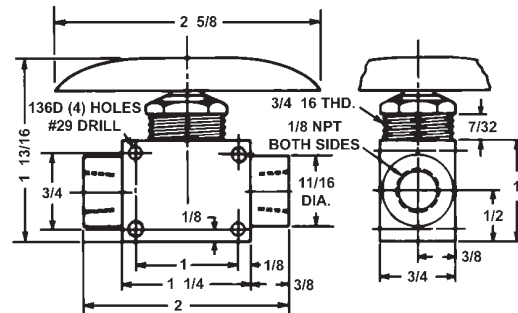
MV3 & MV3-P SERIES - MINIATURE VALVE - POPPET DESIGN

3 WAY VALVES FEATURES

- 3-way normally closed with 1/8" npt ports
- High flow POPPET design
- Anodized aluminum body
- Valve Insert Screw-in cartridge assy. for easy mounting, repair & maintenance
- Large palm button model MV3-P assures easy actuation
- RMV3 & RMV3-P repair kits assure easy repair or replacement



MV3P - PALM BUTTON



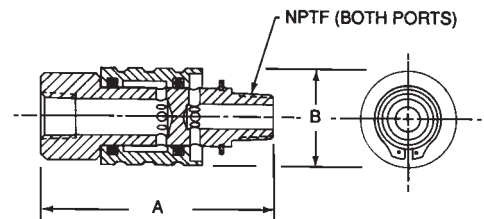
AIR-MITE DEVICES, INC. SLIDE VALVES • QUICK EXHAUST VALVES

SLIDE VALVES



The Slide Valve is a manually operated, two-position, three-way valve for pneumatic applications. Permits instant gauge reading, with gauge vented to atmosphere with valve sleeve in other position. Aluminum sleeve assures ease of control and positive action. Provides a positive shutdown when modifying or performing maintenance to air press circuitry.

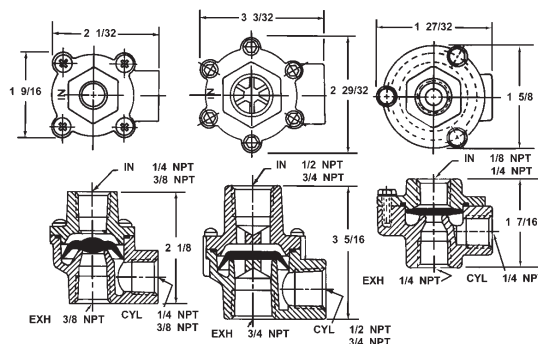
Maximum Operating Pressure: 250PSI
Material: Body-Steel (Black Oxide)
 Sleeve Aluminum
 Retaining Ring-Steel
 O-Ring - Buna N
Temperature Range: -40°F to +212°F (O-Ring)



DIMENSIONS

VALVE NO.	SIZE	A	B	C
SV125	1/8	2 1/2	7/8 DIA.	.98
SV250	1/4	2 3/4	1 1/8 DIA.	1.53
SV375	3/8	2 13/16	1 1/8 DIA.	1.78
SV500	1/2	3 3/4	1 1/2 DIA.	3.26

QUICK EXHAUST VALVES



QV250
QV375

QV500

QV125

Fast air dumping action permits use of smaller valves and piping
 Increases system efficiency & speeds
 Quick Exhaust Valve design gives instantaneous and complete venting of the exhaust air of cylinders, air

DIMENSIONS

MODEL NUMBER	INLET PORT	INLET CV	CYLINDER PORT	EXHAUST PORT	EXHAUST CV
QV125	1/8	.50	1/4	1/4	1.0
QV250	1/4	1.3	1/4	3/8	1.4
QV375	3/8	2.31	3/8	3/8	2.86
QV500	1/2	3.48	1/2	3/4	5.45

Operating Pressure: Min. 20 PSI; Max. 125 PSI.
 Maximum ΔP to shift diaphragm is 5-8 PSI. † 5 psi

FLOW CONTROL - NEEDLE - CHECK VALVES

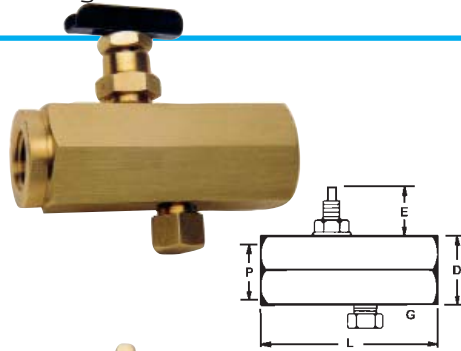
SPECIFICATIONS:

Minimum Operating Pressure: all models 5 psi
 Maximum Operating Pressure: All models 2000 psi
 Viton O-Ring seals standard
 Housing, Plug, Body Brass Hexagon

Needle Brass
 Tamperproof key Cadmium plated steel
 Ball & Retainer Stainless steel
 Poppet Brass with Viton O-ring

FLOW CONTROL VALVE

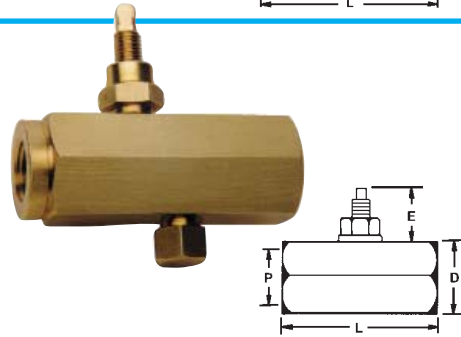
Combines an adjustable needle valve for flow control in one direction, with a ball check which opens for full flow in the opposite direction. It's compact stem has wrench flats for adjusting flow setting.



VALVE NO.	P PIPE SIZE	D HEX.	L	E	G	C _v
F-125	1/8	.687	1.750	1/2	9/32	.23
F-250	1/4	.875	2.375	5/8	5/16	.54
F-375	3/8	1.062	2.750	3/4	11/32	.83
F-500	1/2	1.312	3.187	1	3/8	1.47
F-750	3/4	1.625	3.562	1 1/8	15/32	1.90

NEEDLE VALVE

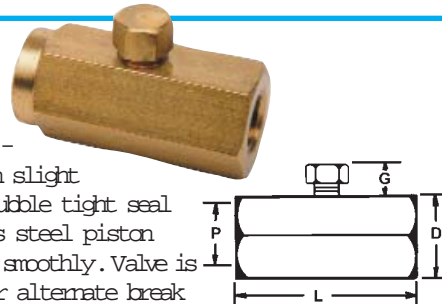
Extremely efficient flow restrictor featuring compact design, fast stem adjustment, and durable stem packing.



VALVE NO.	P PIPE SIZE	D HEX.	L	E	C _v
N-125	1/8	.687	1.5	1/2	.20
N-250	1/4	.875	2.0	5/8	.43
N-375	3/8	1.062	2.250	3/4	.78
N-500	1/2	1.312	2.656	1	1.24
N-750	3/4	1.625	2.937	1 5/8	1.93

CHECK VALVE

Advanced piston type design permits mounting horizontally or vertically without affecting operation. Soft-seat piston operates on slight differential pressure, closes to bubble tight seal to assure zero leakage. Stainless steel piston and light helical spring operate smoothly. Valve is available with special springs for alternate break pressures. (Contact factory)



VALVE NO.	P PIPE SIZE	D HEX.	L	E	C _v
PC-125	1/8	.687	1.5	9/32	.23
PC-250	1/4	.875	2.0	5/16	.54
PC-375	3/8	1.062	2.25	11/32	.83
PC-500	1/2	1.312	2.656	3/8	1.47
PC-750	3/4	1.625	3.00	15/32	1.90

EASY READ—FLOW-NEEDLE-CHECK VALVES With Numerical Readout

FLOW VALVE



CHECK VALVE



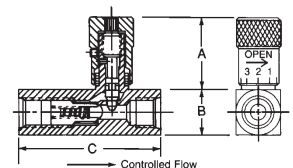
FEATURES:

- Specifications see above top of page
- Metal Setting knob & stem
- Positive position setting for precise flow control & readout
- Accurate adjustment to within fraction of a turn

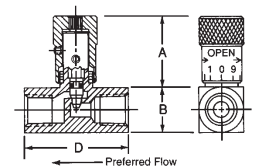
Flow control & Needle valves: Provide controlled flow in one direction, free flow in opposite direction. Flow adjustment can be made under pressure. Knob setting can be locked in any desired position.

Check Valves operate on slight differential pressure. Full flow is permitted in the direction of the arrow, positive check in the

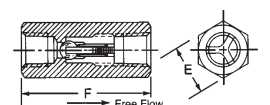
SIZE	A OPEN	A CLOSED	B SQUARE	C	D	E HEX	F
1/8	1 5/8	1 15/32	5/8	1 15/16	1 7/16	-	1 11/16
1/4	1 31/32	1 3/4	3/4	2 13/32	1 3/4	-	2
3/8	2 1/4	2	1	2 7/8	2 1/16	-	2 1/2
1/2	2 13/16	2 15/32	1 1/8	3 7/16	2 1/2	-	2 15/16
3/4	3 3/16	2 13/16	1 3/8	3 3/4	2 3/4	-	3 1/4
1	6 1/8	5 3/4	-	4 1/2	4 1/2	1 3/4	4 1/2



EF Series



EN Series



EPC Series

PC2500 SERIES TWO HAND SAFETY CONTROLS

SELF CONTAINED UNIT



The AIR-MITE 2500 SERIES includes 10 positive two hand non tie-down systems in two basic styles. These compact, easy to install units fit virtually any pneumatic or electric industrial machine. Every component in the 2500 SERIES has proven reliable over years of service.

One style of control station (shown above) has integral push buttons which permit the simplest possible installation. For applications where the controller might interfere with machine loading or productivity, a second style of 2500 SERIES control (shown below) is supplied as a kit with palm buttons designed to be mounted remote from the controller.

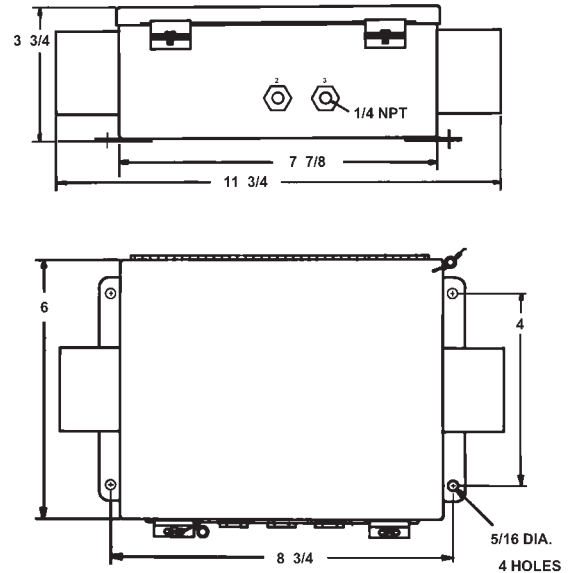
MODULAR UNIT



PC2502 (shown above) allows for an adjustable distance between its deep set buttons. Buttons can be placed very close together or very wide apart to minimize fatigue in handling parts.

After being properly installed and tested on the machine, the 2500 SERIES control units meet the requirements of part 1910 of OSHA, section 217.

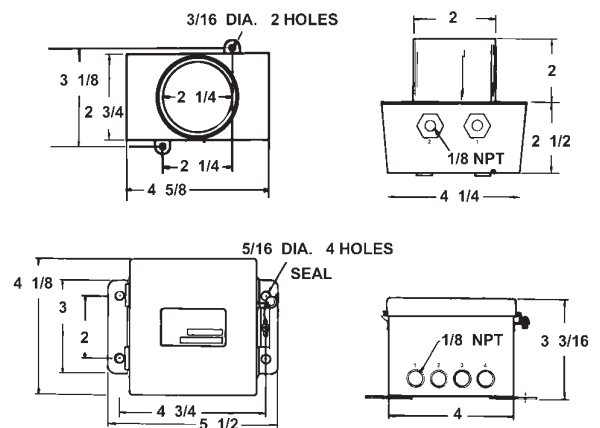
PC2601



These safety controls in the High Flow 2600 Series have been designed specifically for use with AIR-MITE Air Arbor presses. Standard on all these controls are special low-force push buttons which require only a 2 oz. (55) activation pressure and significantly reduce operator fatigue.

Among the options available in the 2500 SERIES are: 3 or 4 way continuous output; hand or foot operated systems; and systems with electrical output.

PC2502



WARNING to designers, purchasers, assembles, and user. *Do not modify this control under any circumstances.* Air-Mite cannot determine exactly how the PC2500 SERIES and its accessories are applied on any particular type of equipment. Additional components may be required to prevent repeat machine cycles occurring from a single actuation.

Supply Pressure: 80 PSI

Operating Temperature: 35°F - 125°F

Operating Force: 2 oz each button

Button Diameter: 2"

Pneumatic Connections:

1/8" NPT — PC2502

1/4" NPT — PC2601

Electrical Output: 15 AMP, 115 or
250 VAC SPDT

Lubrication: None (Dry air only)

Filtration: 5 Micron

Pneumatic Output*:

8 CFM @ 70 PSI

20 CFM @ 70 PSI – avail

Electrical Connections:

6" leads through 1/2" conduit connections

FEATURES

- **3-way Output—std 4-way—available**
- **Low Fatigue**—deep set buttons require only 2 oz. activation force
- **True non-tie down**—buttons must be depressed within .4 seconds
- **Rugged construction**—Hoffman steel box standard
- **Safe** - Units meet the requirements of OSHA 1910 Sec 217 with proper installation
- **Customized for use with Air-Mite components**—either pneumatic or electrical output

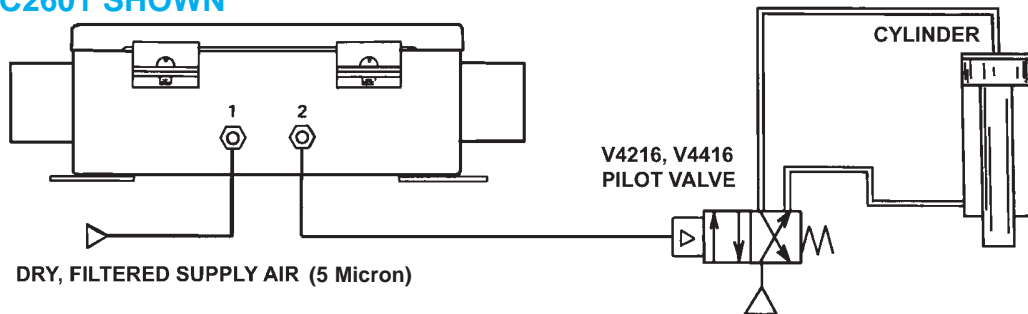
PIPING LAYOUTS FOR 2500 SERIES CONTROLS

3 WAY PNEUMATIC OUTPUT

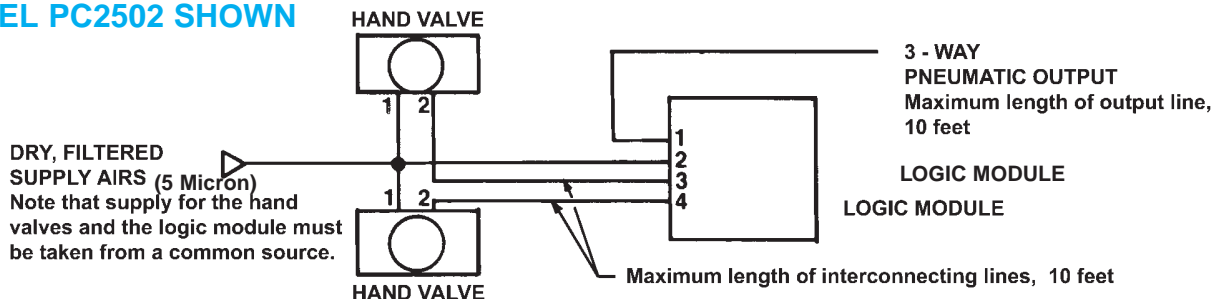
Systems will provide a sustained 3 way pneumatic output when both palm buttons are depressed. Units are ideal for operating small spring returned or double-acting air cylinders

by piloting remote air or hydraulic valves as shown below. Please refer to the specifications above.

MODEL PC2601 SHOWN



MODEL PC2502 SHOWN



SC3000 SERIES TWO HAND SAFETY CONTROLS—STAND ALONE MODELS

The SC3000 Series represents the newest addition to Air-Mite two hand safety controls. The SC3000 provides versatility—with stand alone and press ready models—and economy in a compact package.

3-Way Output—standard
OAL—13-1/4"-std 9-1/2"-avail
Supply Pressure: 60-100 psi
Filtration: 5 Micron

Connections: 5/32" instant fittings
Lubrication: None allowed
Operating Force: 5 oz. (each button)
Button Diameter: 1-3/8"

FEATURES

- **Safe**—Meets requirements of OSHA 1910 Sec 217
- **Quick & Easy Installation**
- **Retrofit Air-Mite presses**—specifically designed to simply retrofit with existing presses in the field or to work with any type of new equipment



Model SC3000

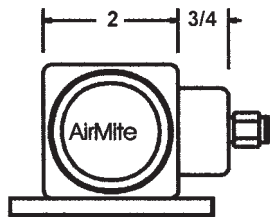


Model SC3400
(Includes Reset Button)

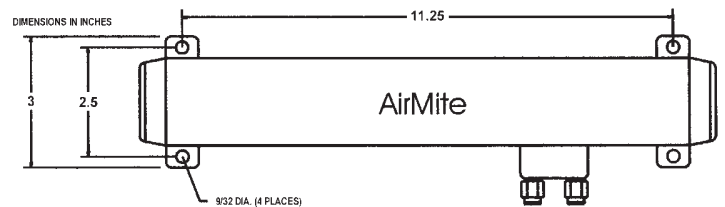
Other Models:

SC4000 includes SC3400 & logic for clamp circuit + MV2 limit valve

SC4500 includes SC3400 & 1-30 sec timer for sequential timing circuits

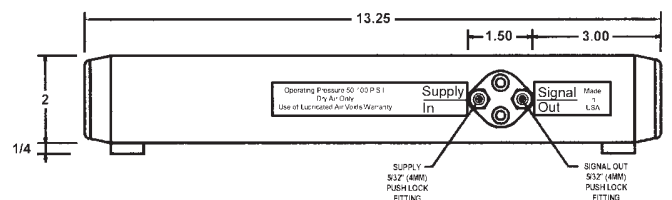


End View



SC3000 - Top View

WARNING: ALL AIR-MITE CONTROLS ARE DESIGNED TO OPERATE PNEUMATIC VALVES AND CYLINDERS. THEY ARE NOT TO BE USED WITH FLYWHEEL PRESSES, BRAKE PRESSES OR SIMILAR DEVICES. IT IS THE BUYERS RESPONSIBILITY TO DETERMINE THE USE AND MOUNTING LOCATION OF THIS DEVICE. THIS EQUIPMENT PERFORMS THE FUNCTION OF A TWO HAND NO TIE DOWN CONTROL ONLY. ALL OTHER PRESCRIBED SAFETY DEVICES, INCLUDING GUARDING, MUST BE USED WITH THIS EQUIPMENT. IT IS THE BUYERS RESPONSIBILITY TO DETERMINE THE PROPER APPLICATION, LOCATION AND USE OF THIS EQUIPMENT.



SC3000 - Rear View

SC3300 SERIES TWO HAND SAFETY CONTROLS – PRESS READY MODELS

Air-Mite SC3300 Press Ready controls are specifically designed to flush mount with our custom machined press bases. The SC3300 provides a clean silhouette with tubing routed under the base. These controls combine all the features of our stand alone models – see facing page – plus a complete package of safety control, valve & bracket, and fittings for easy installation.



ORDERING INFORMATION

- (1) Select the appropriate press from those noted on catalog pages 4-5 – choose the complete model number & stroke
- (2) Place any press modifications – such as longer columns, machined rods, etc. – after press number between ().
- (3) Add “33” after brackets to signify SC3300 safety package – includes two-hand control, mtg bracket, power valve & fittings

NOTE: If no modifications, simply add -33 to complete press numbers

**Press ready versions of SC3400, SC4000 & SC4500 – furnished as needed

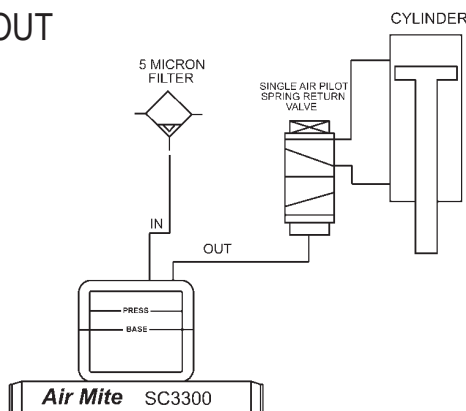
Press Ready Packages

Examples: AP7-2" (3" extra column) -33 = AP7-2" stroke press with extra column & SC3300 control package

DAP38-2" (1-14" threaded rod)-33 = DAP38-2" stroke press with machined rod & SC3300 control package

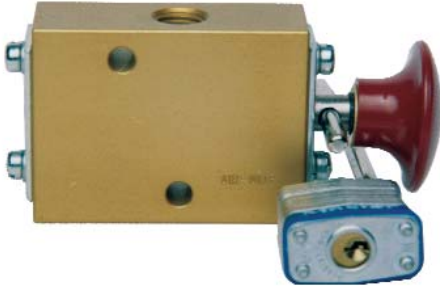
DAP19DR-2"-33 – includes control package adder – no modifications

PIPING LAYOUT



SAFETY LOCK OUT VALVES— LV3 SERIES

Models LV3101 1/8", LV3201 1/4", LV3301 3/8",
LV3401 1/2", LV3601 3/4"



Valve will be locked in Normally Closed position to prevent accidental operation.

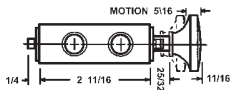
Satisfies OSHA Standard 29 CFR 1910-Control Hazardous Energy Sources.

Protects employees performing service, maintenance or repairs of equipment powered by pneumatic, hydraulic or electrical energy.

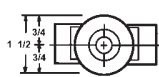
- Suitable for applications up to 150 psi air, 300 psi hydraulic
- Entry from right or left side
- Exhaust inlet same size for faster shutdown
- Supplied with lock & key—specify keyed alike or keyed different

FEATURES

- Anodized aluminum body
- Electroless nickel spools
- Teflon coated Buna N O-rings—Viton optional



LV3101, LV3201



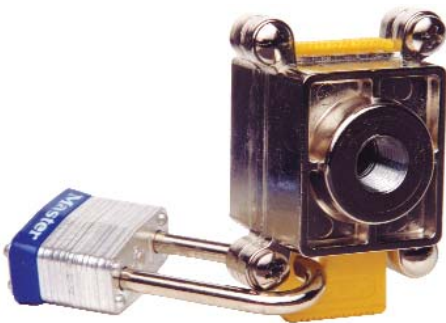
LV3301, LV3401, LV3601

LOCKOUT SLIDE VALVES 2-WAY & 3-WAY

Satisfies OSHA Standard 29 CFR 1910-Control Hazardous Energy Sources.

FEATURES

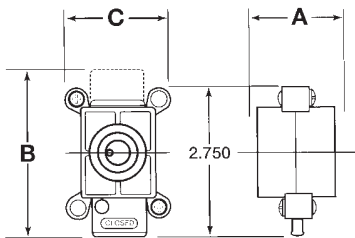
- Nickel plated housing ideal for medical, chemical & food
- Lock in OFF-EXHAUST position only (OSHA requirement)
- Slide of high impact plastic—safety yellow for quick identification
- Slide cannot be removed when valve is locked (OSHA requirement)
- High air flow—minimal pressure drop
- Controlled exhaust rate muffles noise and prevents rupture of precise filter elements due to high back flow



V102

Valve is locked in closed position in photo.

Protects employees performing service, maintenance or repairs to equipment powered by pneumatic, hydraulic or electrical energy. OSHA regulation requires machines and equipment to be locked out from the energy source when service or maintenance is performed.



Materials and Specifications:

- Body: Nickel plated zinc
- Slide: Safety yellow, 15% Teflon, high-impact plastic
- Seals: Pre-lubricated Buna O-Rings
- Screws: Nickel plated steel
- Temperature Range: 40-150° F
- Pressure Range: 0-250 PSIG
- Exhaust Bleed at 100 PSI: 7 SCFM

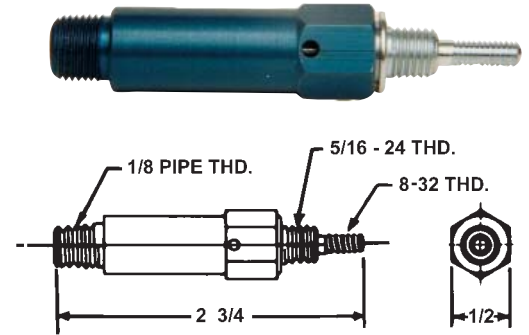
PORTS NPTF	MODEL NUMBER		AVG. CV	DIMENSIONS			W T. OZ.
				A	B	C	
	2-way	3-way		inches			
1/4"	V102	V202	2.7	1.7	3.1	1.92	6.5
3/8"	V103	V203	6.4	1.7	3.1	1.92	6.5
1/2"	V104	V204	6.4	1.7	3.1	1.92	6.5

CYLINDERS

AIR-MITE Miniaturized 3/8" bore, 1/2" stroke, spring return, single-acting air cylinders are machined from solid hexagon aluminum bar stock and have an anodized finish. The piston, ram and end cap are machined from cold rolled steel. Design of the cylinder permits quick, easy packing replacement if necessary.

Simple, practical design of cylinder makes it readily adaptable for a wide variety of uses. When desired, a number of cylinders can be ganged on the i-port manifold, or the cylinder may be screwed directly into the 3-way Valve designed especially for these cylinders.

MODEL No. MC1 1/8 PIPE THD.



MANIFOLDS

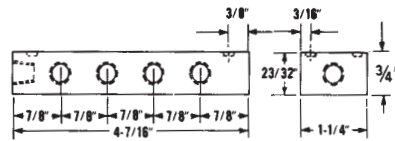
The Miniaturized 8-Port Manifold is machined from aluminum alloy bar stock and anodized. Air inlet and the 8 ports are 1/8-27 pipe thread. Two mounting holes are 5/32" diameter. Careful machining and accurately threaded openings assure fast, easy installation. In applications requiring more than 8 outlets, manifolds may be coupled in tandem with a coupling.

This Manifold is designed for use in applications requiring multiple miniature cylinder actuations from a single source. Unusually large air passages also permit its use with large cylinders and components.

MODEL No. MM1 1/8 PIPE TAP - 9 HOLES

F25 MANIFOLD

The F25 is used in applications requiring up to 8 outlets 1/4" taper pipe threads. Mounting holes are 3/16" diameter. The 8 side inlet ports and 2 end ports are 1/4" npt.



MODEL No. F25 1/4 PIPE TAP - 10 HOLES

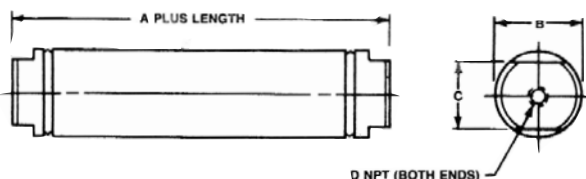
AIR VOLUME CHAMBERS

Easy to connect, mount & use

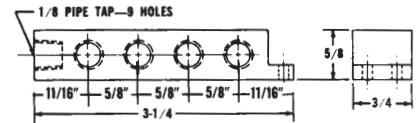
- Series BVC: All brass construction
- Series AVC: All anodized aluminum construction
- 10 Different sizes
- Maximum Pressure—150 psi
- Larger Capacities—available upon request

Air-Mite volume chambers are useful in many applications and are especially suited for use in time delay circuits and for volume storage.

Each volume chamber has threaded ports at each end for easy installation. See chart at right for bore sizes, volume capacities & dimensions of each different chamber.



MM1



F25



AVC 125-1
VOLUME CHAMBER

BVC 100-3
VOLUME CHAMBER

AVC 125-3
VOLUME CHAMBER

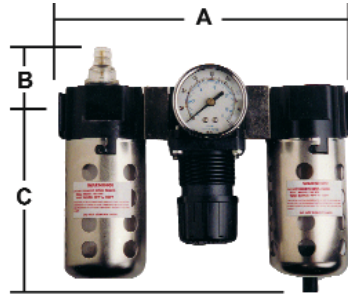
BVC 100-5
VOLUME CHAMBER

BORE	PART NO.	VOLUME/CU. IN.	A	B	C	D
1.00	BVC100-1	.883	1 7/8	1.250	.625	1/8-27
1.00	BVC100-2	1.225	2 5/16	1.250	.625	1/8-27
1.00	BVC100-3	1.508	3 7/16	1.250	.625	1/8-27
1.00	BVC100-4	2.356	4 7/16	1.250	.625	1/8-27
1.00	BVC100-5	3.142	5 7/16	1.250	.625	1/8-27
1.00	BVC100-6	3.927	6 7/16	1.250	.625	1/8-27
1.00	BVC100-7	4.721	7 7/16	1.250	.625	1/8-27
1.250	AVC125-1	1.687	2 9/16	1.500	.625	1/8-27
1.250	AVC125-2	2.914	3 9/16	1.500	.625	1/8-27
1.250	AVC125-3	4.414	4 9/16	1.500	.625	1/8-27

AIR-MITE DEVICES, INC.

MODULAR FILTER/ REGULATOR/LUBRICATOR

New modular filter, regulator, lubricator of fers simple & convenient assembly with advanced engineering benefits. The fog type lubricator sends all metered air downline in fog droplets accommodating a wide line of applications. The modular filter delivers superior flow performance up to 100 SCFM. Individual units can be installed or removed on-line without disturbing existing piping. Piping size needed is accomplished quickly by use of separate 1/4", 3/8", and 1/2" insert pipe ports.



MODULAR

MODEL NO.	DIMENSIONS			BOWL CAPACITY	NET WT. POUNDS
	A	B	C		
C33352	11 1/2	3 3/4	5 7/16	5 oz.	4
C33353	11 1/2	3 3/4	5 7/16	5 oz.	4
C33354	11 1/2	3 3/4	5 7/16	5 oz.	4

STANDARD FILTER/ REGULATOR/LUBRICATOR

Standard filter, regulator, lubricator combination units are designed to provide a clean, filtered flow of properly lubricated, precisely regulated, pressurized air. All units are equipped with bowl guards as standard equipment. These units assure improved reliability of air circuits and extend service life and performance of all air powered tools and

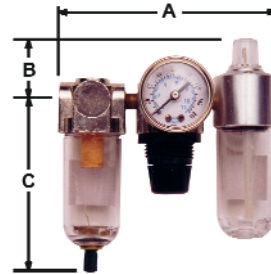


STANDARD FILTER/REGULATOR/LUBRI-

MODEL NO.	DIMENSIONS			BOWL CAPACITY	NET WT. POUNDS
	A	B	B		
8672BGT	10 3/4	1 3/4	5 11/16	9 oz.	4.5
8673BGT	10 3/4	1 3/4	5 11/16	9 oz.	4.5
3564-8BG	11	1 3/4	5 11/16	9 oz.	5.5

MINIATURE FILTER/REGULATOR/ LUBRICATOR

Series 7681, small air regulators designed for applications where space is a factor. Series 7682 two-way regulator has extra low pressure side connection. Maximum supply pressure 200 PSI. Compact assemblies of Air-Mite Miniature Filters, Regulators and Lubricators are especially suited for applications where space or low flow requirement is



MINIATURE CONTROLS

Filter-Regulator w/Gauge-Lubricator

MODEL NO.	PIPE SIZE	DIMENSIONS			BOWL CAPACITY	NET WT. POUNDS
		A	B	C		
7681	1/8	5 1/4	2 1/4	3	1 oz.	1.3
7682	1/4	5 1/4	2 1/4	3	1 oz.	1.3

All Filters, Regulators or Lubricators are available as single units in both standard and miniature sizes. Please consult factory for details.

FILTER/REGULATOR COMBINATION (DUO)

Combination unit incorporating the superior flow performance of our standard filter with the precise control capability of our compact, highly balanced regulator. Regulator contains disc assembly which minimizes the effect of supply pressure variations. This combination is ideally suited for high flow industrial requirements, as well as those requiring precise pressure control. Available in 1/4", 3/8",

Max. pressure:
150 psi
Temp. rated:
40°F to 120°F
Flow Rates:
Up to 100 SCFM



FILTER-REGULATOR R

MODEL NO.	DIMENSIONS			BOWL CAPACITY	NET WT. POUNDS
	A	B	B		
N70352	6	1 1/4	5 11/16	9 oz.	3.2
N70353	6	1 1/4	5 11/16	9 oz.	3.2
N70354	6	1 1/4	5 11/16	9 oz.	3.2
3506MS	9 1/8	1 1/2	8 3/8	29 oz.	8

INTEGRAL FILTER REGULATOR 8600 SERIES

The Air-Mite Integral filter/regulator acts as a dual stage system. Its first stage is that of a filter to eliminate condensed moisture, pipe scale, dirt and rust from the air line. Its second stage is that of a high performance regulator. Finally, this integral unit features a triple stage baffle, a cleanable, porous bronze 40 micron element and a plastic



INTEGRAL FILTER/REGULATOR R

MODEL NO.	INLET/OUTLET
Plastic Bowl & Bowl Guard	
B752	1/4 NPT
B753	3/8 NPT
B754	1/2 NPT

PIGGY-BACK MODEL

All of the features of the mini regulator plus the space saving convenience of an integral filter and regulator combined in one unit. The 20 micron, screw in, porous bronze filter element is cleanable, and can be drained by depressing tire valve.



PIGGY-BACK MODEL

MODEL	PIPE SIZE	NET. WT. POUNDS*
B741	1/8	5
B742	1/4	5

*Add .1 lb for gauge

STANDARD AIR FILTERS

No moving parts. Fully automatic. Maximum pressure drop. Guards air supply from grit, rust, scale or any excessive moisture. Bronze Element 40 Micron Mesh .001-.002 particles Filtration.

Baffle Plate prevents liquids from re-entering air line. Transparent bowl of high tensile strength gives clear view of filtration. Element is easily removed for cleaning.



FILTER

MODEL	PIPE SIZE	SCFM	BOWL CAPACITY
F352	1/4	60	9 oz.
F353	3/8	90	9 oz.
F354	1/2	105	9 oz.
F329-06	3/4	260	29 oz.
F329-08	1	300	29 oz.

NOTE: All filters available with 5 micron filter for safety cir -

STANDARD LUBRICATORS

Completely automatic dispenses lubrication immediately, but only when air flows. Uniform, controlled injection of pre-atomized oil directly into the air stream ensures maximum lubrication and protection for air operated devices. Adjusting needle permits MICRO adjustment to prevent flooding.



LUBRICATOR

MODEL NUMBER	PIPE SIZE	BOWL CAPACITY
L352	1/4	9 oz.
L353	3/8	9 oz.
L354	1/2	9 oz.
L376W	3/4	29 oz.

STANDARD REGULATORS

Regulators are now available in 1/4, 3/8 and 1/2 inch sizes for air flows up to 100 SCFM. Engineered as high performance units with compact size, all regulators provide a sensitivity of diaphragm operation for repeated accuracy. A highly balanced disc assembly minimizes the effect of supply pressure variations, and an inserted brass seat and molded disc adds stability and efficient aspiration for minimal droop.

Optional gauge available. Add "G" suffix



REGULATOR

MODEL	PIPE SIZE	MAX. FLOW SCFM	APPROX. WT-LBS
R352T	1/4	50	1.5
R353T	3/8	80	1.5
R354T	1/2	100	1.5
R356	3/4	240	3.0
1588	1	240	3.0

MINIATURE FILTERS

Incoming compressed air enters through permanent ports machined into the head that directs flow on to sides of bowl in a spinning motion where all harmful matter drains to bowl bottom for eventual removal. Air also passes through 20 micron porous bronze screw-in filter element for final filtering.



MINIATURE FILTER

MODEL NO.	PIPE SIZE	NOMINAL FLOW SCFM	BOWL CAPACITY
F300-01	1/8	27	1 oz.
F300-02	1/4	27	1 oz.

NOTE: All filters available with 5 micron filter for safety cir -

MINIATURE LUBRICATORS

This lubricator is designed for low air flow applications where space considerations dictate a compact lubricator. Ideal for packaging machinery, clamping cylinders, small automated equipment.

As air flows through lubricator, oil is fed to visible plastic dome and dropped into the air stream where it is atomized and carried



MINIATURE LUBRICATOR

MODEL NO.	PIPE SIZE	APPROX. WT. LBS.
L181	1/8	5
L182	1/4	5

MINIATURE REGULATORS

Have been developed to fill the need for high performance, low flow applications requiring compact design. Both air and water service models are available. Sensitive diaphragms deliver high accuracy and performance. Rugged valves with brass and zinc bodies, molded rubber seats and stainless stems make these mini regulators the most durable on the market.



MINIATURE REGULATOR

MODEL NO.	PIPE SIZE	MAX. FLOW SCFM	MAX FLOW (G.P.M.)	APPROX. W T. LBS.
R161	1/8	20	-	.375
R162	1/4	20	-	.375
2612	1/4	20	5.0	.125
2613*	1/4	20	5.0	.125

*WATER SERVICE WITH STAINLESS STEEL

PRESSURE GAUGES

Dependable, accurate gauge for all types of industrial applications. Gauge has bronze movement and dual scale.



PRESSURE GAUGES

Part Number	Description	Pressure Range	Used On
1481	2 Face, 1/4 Center Back Mount	0-160PSI	Std. Regulators
1481A	2 face, 1/4 Center Back Mount	0-60 PSI	Std. Regulators
1681	1 1/2 Face, 1/8 Center Back Mount	0-160 PSI	Mini Regulators
1681A	1 1/2 Face, 1/8 Center Back Mount	0-60 PSI	Mini Regulators

Model #33 SINGLE VENTURI

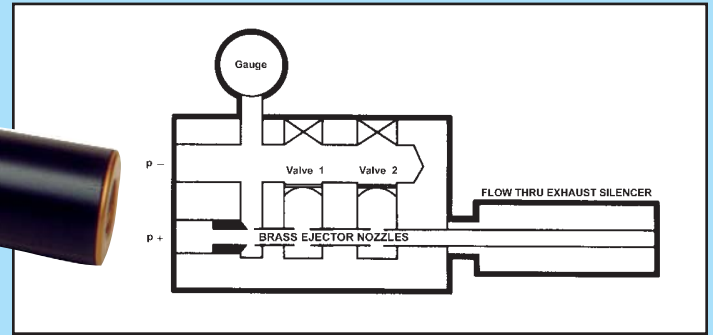


Air-Mite Model 33 single-venturi vacuum pump uses standard compressed air to develop a vacuum flow through the pump. The small size and light weight of this model ensures good response time and low operating cost. As with our line of multiple-venturi pumps, the Model 33 pump can be used with packaging machinery, laboratory equipment, dental equipment, printing machinery, textile machinery, and tank evacuation as well as scores of other applications in various industries.

The multi-venturi vacuum pump is ideal for explosion-proof applications and a wide range of other applications in robotics, automated machinery, control of equipment in the packaging, printing, dairy, and commercial candy-making industries, as well as for mail inserting and glass handling equipment and for medical, dental, and research laboratories.



**AIR-MITE POWERVAC
MULTIPLE-VENTURI VACUUM PUMPS**
Efficient, Reliable Straight-Thru Design



When compressed air is forced through a conical nozzle, its velocity increases and a decrease in pressure occurs. This principle, discovered by 189th century physicist G.B. Venturi, can be used to generate vacuum economically without a single moving part.

Multi Venturi Design

AIR-MITE'S PowerVac design of vacuum generators incorporates a series of Venturi nozzles. Each nozzle has a progressively larger orifice selected to

extract the maximum amount of energy from the compressed air while optimizing the levels of vacuum generated. Normally, no special prefilters are required because the Venturi nozzles are aligned to allow "straight through" air flow. Thus, any air line contaminants easily clear the generator without clogging or building up.

Ten Important Design Features:

n Compressed Air Driven

PowerVac Pumps are easy to install. They operate efficiently on shop air (20 to 90 PSI) and are well suited to explosion-proof applications. And there's no RF noise generated to affect electrical/electronic systems either.

n Economical to Operate

The innovative PowerVac multi-Venturi design uses less compressed air, yet delivers three to four times more vacuum flow than single Venturi units.

n Compact Size

Allows pump placement closer to the point of use. Shorter air lines cost less and quicken response.

n Light Weight Construction

Most models weight less than two pounds providing maximum flexibility and mounting ease.

n Superior Control

Vacuum levels are controlled by adjusting inlet pressure. Pumps can be cycled on & off by controlling inlet pressure rather than the vacuum line. Thus, there's no wasted energy.

n No moving parts

Expect extra long pump life with no lubrication required.

n Quiet Operation

Pumps come equipped with exhaust silencers, resulting in low noise levels in the 60-65 dB range.

n Low Cost

Pricing that's well below foreign imports is only part of the picture. Combined with ease of installation, it means that your total investment is far less when you use AIR-MITE'S PowerVac.

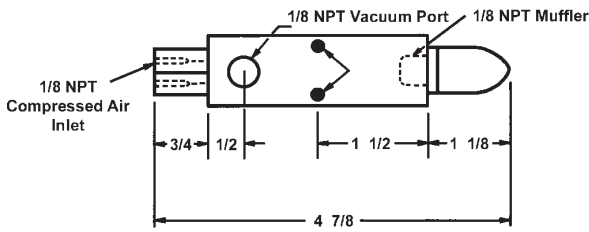
n All Metal Construction

Viton valves standard.

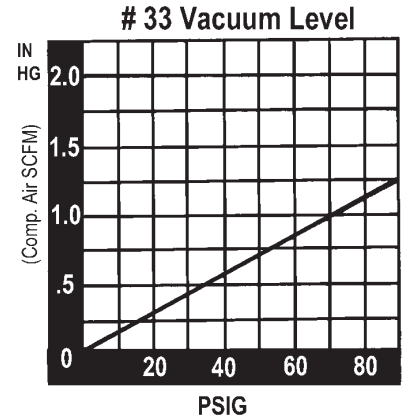
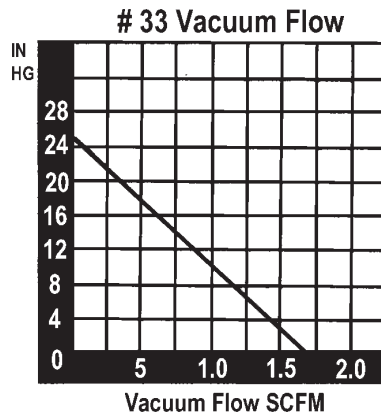
n Quick Change Valves

Valves can be replaced using only a screw driver and without removing the pump from its mounting.

Model #33 VACUUM PUMP SPECIFICATIONS



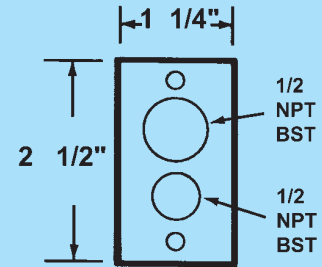
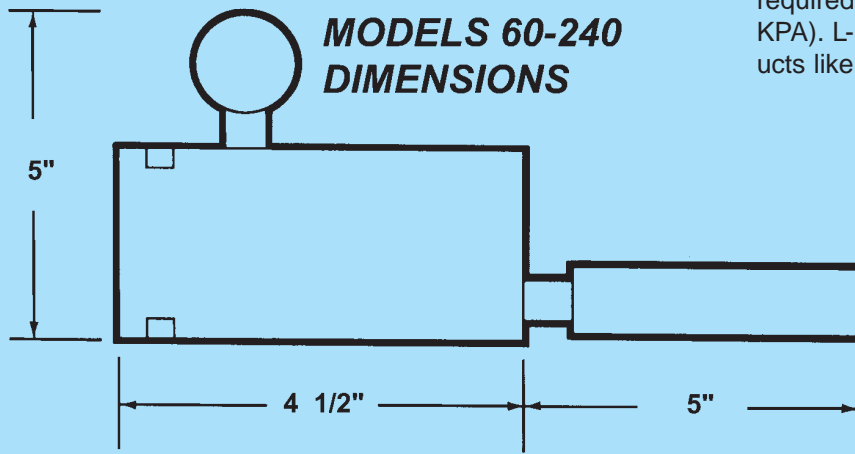
CONSTRUCTION: ALUMINUM BODY 1" SQUARE
BRASS INLET NOZZLE 5/8" HEX
POLYETHYLENE MUFFLER 5/8" DIA.
WEIGHT 3 OUNCES



Offer TWO SERIES Of Vacuum Ejectors

Standard Series Should be used when higher vacuum levels are required (maximum 27" Hg-90 KPA). For application when lifting nonporous materials like sheet metal, glass or laminates.

L-High Flow Series Should be used where more flow is required and maximum vacuum level is (21" Hg-70 KPA). L-Series performs better on handling porous products like cardboard, paper, wood or fabrics.



AIR-MITE VACUUM GENERATORS PERFORMANCE TABLES

Induced Flow At Inches Hg CFM

MODEL NO.	1.5"	3"	6"	9"	12"	15"	18"	21"	24"	AIR CONSUMPTION CFM	OPTIMUM PSI WORKING PRES
SURE											
60	5.0	3.0	1.9	.8	.6	.4	.3	.2	.1	2.4	68
60L	9.0	6.1	4.0	2.0	1.8	1.0	.7	.2		3.3	86
120	9.0	6.1	4.0	1.6	1.2	.8	.6	.4	.2	4.6	68
120L	17.0	9.0	5.5	3.2	2.4	1.6	.4	.2		5.4	86
180	13.0	9.0	5.5	2.4	1.9	1.2	.9	.5	.25	6.7	68
180L	21.0	15.0	9.0	4.2	3.2	2.2	1.5	1.0		9.2	86

EVACUATION TABLES

Time In Seconds To Evacuate One Cubic Foot To Desired Hg

MODEL NO.	1.5"	3.0"	6.0"	9"	12"	15"	18"	21"	24"
60	5	1.3	4	9	18	27	45	70	130
60L	.3	.7	1.8	4	7	12	19	33	
120	3	.6	2	5	9	15	21	38	70
120L	2	3	1.5	3	5	10	33		
180	1	2	5	1.4	2.5	4	6	11	45
180L	1	2	.4	1.2	2	3	4	9	
240	1	2	.8	2	4	6	10	19	33

Note: For Vacuum Electric Switches, see page 53.

ROTO FLO SPEED CONTROLS – ROTATING IN-PORT CONTROLS – 1/8", 1/4", 3/8", 1/2" NPT



Provides precise control of actuator speed
Full 360 swivel permits best alignment of tubing
Saves space & cost of buying separate valve & fitting
Available in both npt & instant tube fittings

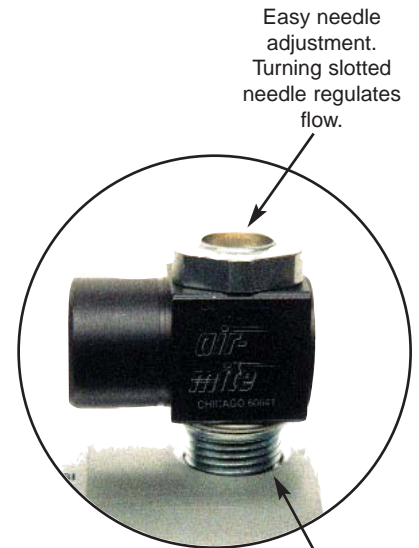
FEATURES

- Body corrosion resistant, anodized aluminum swivel
- Stainless steel needle & springs
- Max Operating Pressure 150 psig Cracking pressure 7.5 psig

ORDERING INFORMATION

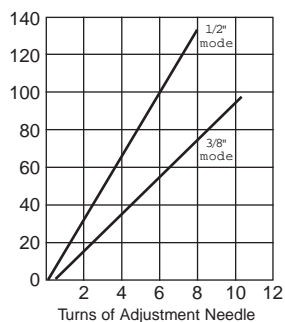
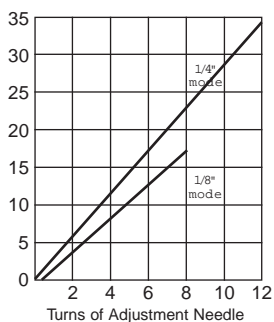
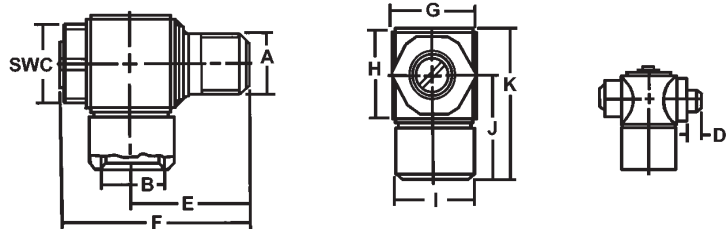
Model Number	Description	Pipe Thread (Male x Female)
RFT2-2 (RF125)	Threaded fitting, slotted needle	1/8" x 1/8" npt
RFT4-4 (RF250)	Threaded fitting, slotted needle	1/4" x 1/4" npt
RFT6-6 (RF375)	Threaded fitting, slotted needle	3/8" x 3/8" npt
RFT8-8 (RF500)	Threaded fitting, slotted needle	1/2" x 1/2" npt

		Tube Size	Pipe Thread
RFI5/32-2	Instant fitting, slotted needle	5/32"	1/8" npt
RFI4-2	Instant fitting, slotted needle	1/4"	1/8" npt
RFI4-4	Instant fitting, slotted needle	1/4"	1/4" npt
RFI6-4	Instant fitting, slotted needle	3/8"	1/4" npt
RFI6-6	Instant fitting, slotted needle	3/8"	3/8" npt



Easy needle adjustment. Turning slotted needle regulates flow.

Flow control can be installed at factory for no additional charge.



PORT SIZE	"C" inches	"D" inches	"E" inches	"F" inches	27/32 "A" & "B"	"G" inches	"H" inches	"I" inches	"J" inches
1/8	1/2	0	25/32	1-	2-9/32	19/32	19/32	33/64	47/64
1/4	43/64	0	1-1/64	1-	17/64	3/4	3/4	23/32	7/8
3/8	7/8	0	1-9/64	39/64	1-	29/32	29/32	29/32	1-1/8
1/2	1-1/16	0	1-	1-	27/64	1-7/64	1-7/64	63/64	1-7/32

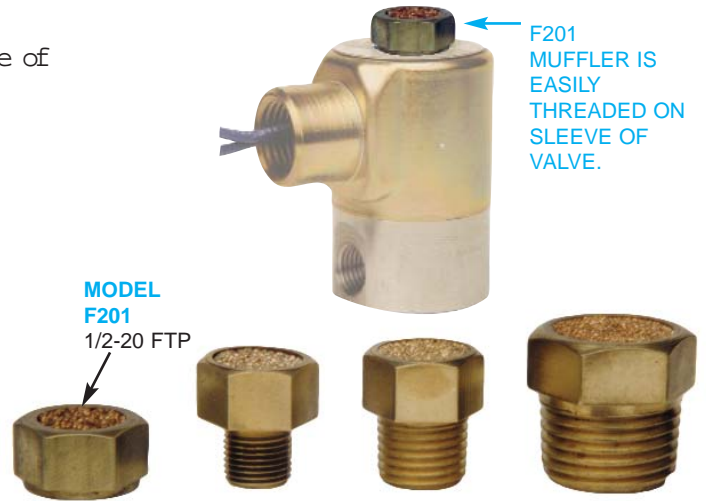
AIR-MITE Exhaust Silencers and Dust Filters

Effectively silences air in atmosphere and prohibits dust and/or dust particles from entering valves. Low silhouette of the unit makes it suitable for various types of mounting.



The Speed Control Silencer, a combination Exhaust Silencer and Dust Filter, have a simple needle adjustment for regulating speed and air control. Simple construction and non-corrosive brass and bronze materials are used to provide durable simple, easy to maintain and clean unit. Units are easily cleaned with cleaning solvent or agent such as gasoline, or carbon tetrachloride, etc.

- SCS 1/8" NPT SCS 3/8" NPT SCS 3/4" NPT
- SCS 1/4" NPT SCS 1/2" NPT SCS 1" NPT



Fits most valves. Two piece construction of non-corrosive brass and bronze materials. Easily cleaned in cleaning solvent or agent, such as gasoline, carbon tetrachloride, or by simply reversing piece and blowing air thru it.

- X201 1/8" NPT X201 3/8" NPT X201 3/4" NPT
- X201 1/4" NPT X201 1/2" NPT X201 1" NPT

U.S. Pat. No. 3,163,256

- LOW COST • EXCELLENT REPEATABILITY • SNAP ACTION • FAST RESPONSE

F-4000-X Series



with cover

w/o cover

The switches have three electrical terminals: Normally Open, Normally Closed and Common. 15-amp switches are standard.

SPECIFICATIONS
ELECTRICAL

Switch Action: Single pole, double throw
Electrical Rating: 15 amp, 125 or 250 volts AC
Electric Switch: UL Approved
Electrical Connections: .187" quick-connect terminal

MECHANICAL

Operating Speed: 25 milliseconds
Signal Pressure: 30" Hg. max.

The F-4000-X Series Standard Vacuum/Electric Switches interface from vacuum to electrical systems. Ideal for precise vacuum sensing. The F-4000-X has adjustments for controlling the ON and OFF operating points. The switch is adjustable 4.0 to 15" Hg.

The F-4200-X Series Vacuum/Electric Switches interface from vacuum to electrical control circuits. Ideal for low differential vacuum applications. The switch is adjustable from 0-29.9" Hg. Standard 1/8"

MATERIALS
Temperature Limits: 40° to 120°F (4° to 49°C)

Housing: Polysulfone
Diaphragm: Polyurethane
Spring: Stainless Steel

MOUNTING

F-4000-X Series Flush mount—mounting hole. 125" diameter, use No. 6 screw.
F-4200-X Series Panel mount—mounting hole size 7/16" diameter.

F-4200-X Series



Panel Mount

Subminiature Size
Low Differential

PORT CONNECTIONS

F-4000-X Series - 10-32 threads furnished with 10-32 x 1/16" I.D. barbed fitting.
F-4200-X Series - 10-32 threads x 1/16" or 1/8" I.D. barbed fitting

ADJUSTMENT RANGE

F-4000-X Series 4.0 to 15" Hg. Max.
F-4200-X Series 0 to 29.9" Hg. Max
Special Operating Ranges on Request.

AIR HOLDING FIXTURES

- Versatile • Fast Acting • Provides Secure Grip

can be used with Brown and Sharpe type collets

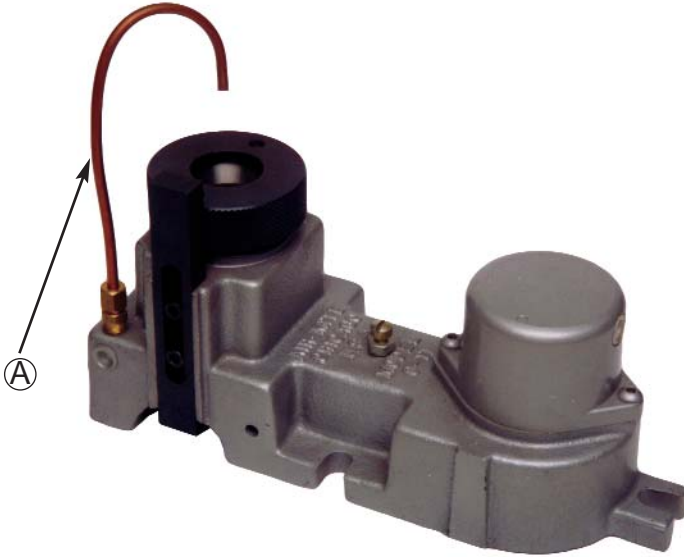


Air-Mite air holding fixture provides compound leverage and holding power to assure secure grip on part regardless of shape.

Force is applied evenly over the entire surface of the collet. Smooth round objects as well as various shaped work pieces are held firmly and securely during machining or assembling operation without the risk of causing scratches or distortion.

The air-holding fixture will accommodate any shape to which a collet will conform. The device also serves as an accurate positioner, precisely maintaining the desired location as succeeding work pieces are loaded and requiring negligible operator dexterity.

Chip blower (A) maintains intermittent outward flow, preventing chips or particles from entering and fouling the collet's expanding slots. Flow of liquid also serves to effectively cool the machining area. A mechanical spring ejector for parts is available as an option if desired. See picture below.



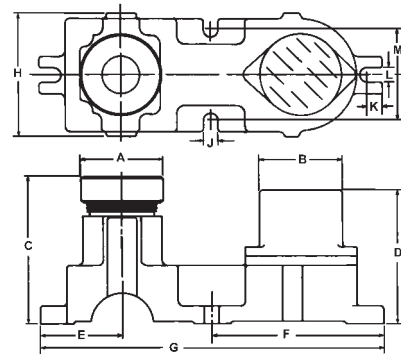
VERSATILE – Unique design permits using unit upright or positioned on its side with same maximum efficiency.

- 3 Model Sizes—1/16" thru 1-1/4" capacities

Air-Mite 00-10 Air Holding Device is small, compact, especially suited for use with small milling machines or wherever limited clearance exists between the bed and the spindle of the machine. Can be used with Brown & Sharpe type collets with a capacity from 1/16" to 9/16" in rounds. Square: 3/16" to 13/32". Hexagon: 3/16" to 1/2".

Air-Mite 2-22 Air Holding Device is designed for use with those jobs requiring extra holding pressure. Use with Hardinge 2-22 collets or similar. Capacity Round to 1-1/4" – Square 7/8" and Hexagon 1-1/16".

The three Air-Mite Holding Devices available each use a different collet and have varying capacities. All models use the same type of stationary collets that prevent depth and center variances of work being held.



Air-Mite 0-11 Air Holding Device is generally recommended for use with work under 1". Used with Brown & Sharpe type collets No. 11 with a capacity from 1/16" to 7/8" in rounds. Square 3/16" to 19/32". Hexagon: 3/16" to 3/4".



DRILL BUSHING BAR (OPTIONAL)
This drill bushing bar may be used with a slip renewable bushing for drilling, tapping or reaming, etc., and can also be utilized as a depth stop.



SPRING EJECTOR STOP ASSEMBLY
Using Brown & Sharpe type of stop collet, an effective means of mechanical ejection can be incorporated by just screwing the AIR-MITE Spring Ejector Stop Assembly into the bottom of the stop collet. This unit serves as a stop assembly and can be easily adjusted to obtain the stroke necessary to eject the part.

MV2-L MINIATURE VALVE STRAIGHT LINE TOGGLE (45° – Two Directions) – Optional Accessory – Shown at right.
The AIR-MITE miniature three-way valve shown can be used in a normally closed or normally open position. Serves dual purpose. It operates the collet fixture and provides blast of air necessary to clear any chips resulting from drilling operations, etc.



NOTE: V3200 ROTORAM® VALVE can also be used to operate AIR-MITE air-holding fixture.

Model	A	B	C	D	E	F	G	H	J	K	L	M	Approx. Weights
00-10	2 3/16	2 11/16	3 3/4	3 5/8	2 3/8	4 1/2	9	3 3/4	1/2	1/2	1/2	2 1/4	9 lbs.
0-11	2 3/4	2 11/16	5 1/8	4 3/16	2 3/4	5 3/4	11 1/2	4	1/2	1/2	1/2	3 1/16	16 lbs.
2-22	3 1/2	3 1/2	6 1/8	4 9/16	3 5/16	6 1/8	13 1/2	5 1/8	1/2	1/2	1/2	3 3/4	28 lbs.

PUSH-IN BRASS TUBE FITTINGS

Brass push-in connectors reduce installation time up to 75% . . . just push nylon or poly tubing into the connector for positive, no-leak sealing. To remove the tubing, hold back the connector release ring and pull the tubing free.

UNION 62PL

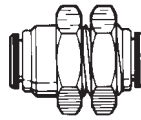
PART NO.	TUBE SIZE	O.D.	L	CIRCLIPS ID.*	FLOW DIA. D
62PL-2	1/8	.39	1.22	.39	.078
62PL-4	1/4	.47	1.26	.47	.177
62PL-6	3/8	.67	1.61	.67	.295



*Unions can be used as bulkhead unions, it is only necessary to mount two

BULKHEAD UNION 62PLBH

PART NO.	TUBE SIZE	B	C HEX	P MAX.	L	FLOW DIA. D
62PLBH-2	1/8	.43	5/8	.24	1.22	.078
62PLBH-4	1/4	.55	3/4	.24	1.26	.177
62PLBH-6	3/8	.71	7/8	.35	1.63	.295



FEMALE CONNECTOR 66PL

PART NO.	TUBE SIZE	PIPE THREAD (NPTF)	L	FLOW DIA. D
66PL-2-2	1/8	1/8	1.16	.078
66PL-4-2	1/4	1/8	1.22	.177
66PL-4-4	1/4	1/4	1.34	.177
66PL-6-4	3/8	1/4	1.50	.295



MALE CONNECTOR 68PL*

PART NO.	TUBE SIZE	THREAD PIPE (NPTF)	C HEX	L	M	FLOW DIA. D
68PL-2-2	1/8	1/8	3/8	.81	.41	.078
68PL-4-2	1/4	1/8	1/2	.96	.57	.188
68PL-4-4	1/4	1/4	9/16	.94	.39	.188
68PL-6-2	3/8	1/8	11/16	1.22	.83	.187



NOTE Also available with 5/32" tube x 1/8" rpt.

MALE CONNECTOR 68PL-2*

PART NO.	TUBE SIZE	PIPE THREAD (NPTF)	C HEX	L	M	FLOW DIA. D
68PL-2-10X32	1/8	10-32	3/8	.83	.69	.098
68PL-5/32-10X32	5/32	10-32	3/8	.87	.71	.098
68PL-4-10X32	1/4	10-32	1/2	.87	.73	.098



*All straight male connectors have an internal hex for the use of an Allen Key to allow the fitting to be mounted in any position. This also permits close porting not possible with a standard wrench.

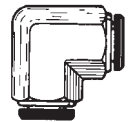
UNION TEE 164PL

PART NO.	TUBE SIZE	L	FLOW DIA. D
164PL-2	1/8	.69	.078
164PL-4	1/4	.73	.177
164PL-6	3/8	.98	.295
164PL-8	1/2	1.16	.393



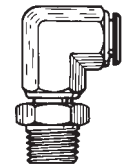
UNION ELBOW 165PL

PART NO.	TUBE SIZE	L	FLOW DIA. D
165PL-2	1/8	.68	.078
165PL-4	1/4	.73	.177
165PL-6	3/8	.98	.295
165PL-8	1/2	1.16	.393



MALE ELBOW SWIVEL 90 169PL

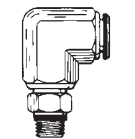
PART NO.	TUBE SIZE	PIPE THREAD (NPTF)	C HEX	L	M	FLOW DIA.
169PL-2-2	1/8	1/8	7/16	.69	1.16	.078
169PL-4-2	1/4	1/8	7/16	.73	1.20	.177
169PL-4-4	1/4	1/4	9/16	.73	1.38	.177
196PL-4-6	1/4	3/8	3/4	.71	1.42	.177
196PL-6-2	3/8	1/8	5/8	.98	1.38	.197
196PL-6-4	3/8	1/4	5/8	.98	1.57	.295
196PL-8-4	1/2	1/4	3/4	1.16	1.73	.312



NOTE Also available with 5/32" tube x 1/8" rpt.

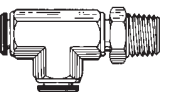
90MALE ELBOW SWIVEL 90 169PLNS

PART NO.	TUBE SIZE	PIPE THREAD (NPTF)	L	N	FLOW DIA.
169PLNS-2-2	1/8	1/8	.67	.87	.078
169PLNS-4-2	1/4	1/8	.73	.87	.177
169PLNS-4-4	1/4	1/4	.73	1.08	.177
169PLNS-6-4	3/8	1/4	.98	1.14	.295
169PLNS-8-6	1/2	3/8	1.10	1.29	.394



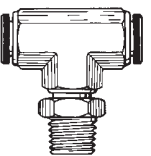
MALE RUN TEE SWIVEL 171PL

PART NO.	TUBE SIZE	PIPE THREAD (NPTF)	C HEX	L	M	FLOW DIA.
171PL-2-2	1/8	1/8	7/16	.69	1.16	.078
171PL-4-2	1/4	1/8	7/16	.73	1.2	.177
171PL-4-4	1/4	1/4	9/16	.73	1.38	.177
171PL-6-4	3/8	1/4	5/8	.98	1.57	.295
171PL-6-6	3/8	3/8	3/4	.98	1.59	.295
171PL-8-6	1/2	3/8	3/4	1.16	1.73	.393



MALE BRANCH TEE SWIVEL 172PL

PART NO.	TUBE SIZE	PIPE THREAD (NPTF)	C HEX	L	M	FLOW DIA.
172PL-2-2	1/8	1/8	7/16	.69	1.16	.078
172PL-4-2	1/4	1/8	7/16	.73	1.20	.177
172PL-4-4	1/4	1/4	9/16	.73	1.38	.177
172PL-6-4	3/8	1/4	5/8	.98	1.57	.295
172PL-6-6	3/8	3/8	3/4	.98	1.59	.295



THEORETICAL POWER CONVERSION TABLE

AIR-MITE CYLINDERS are built to give the maximum in holding power. However, some uses require a regulated and controlled pressure. This table is furnished to act as a quick reference in power control. By referring to the

diameter of the cylinder to be used in the left column of the table and reading across, the line pressure required to give exactly the desired amount of force may be readily calculated.

Cylinder Diameter Inches	Power Factor & Bore Area Square Inches	Line Pressure, Lbs.										
		50 Lbs.	60 Lbs.	70 Lbs.	80 Lbs.	90 Lbs.	100 Lbs.	110 Lbs.	120 Lbs.	130 Lbs.	140 Lbs.	150 Lbs.
3/8	0.110	5.5	6.6	7.7	8.8	9.9	11.0	12	13	14	15	16.5
1/2	0.190	9.5	11.5	13.3	15.5	17	19	21.9	22.8	25	26.6	28.5
3/4	0.440	22	26.5	30.8	35	40	44	48.5	53	57	61.7	66
1	0.785	39	46.5	54.9	62.8	70.6	78.5	86	94	102	109.9	117.7
1 1/8	.0994	50	59	70	80	89	99	109	119	129	139	149
1 1/4	1.22	61	74	86	98	110	122	134	146	159	171	183
1 1/2	1.76	88	106	123	141	158	176	194	211	229	246	265
1 5/8	2.07	103.5	124	145	165.5	186	207	228	248	269	290	310.5
2	3.14	157	188	220	250	283	314	346	377	408	439	470
2 1/4	3.98	199	229	278	318	358	398	438	477	517	557	597
2 1/2	4.91	242	290	338	387	432	483	530	580	638	687	724
3	7.07	353	424	494	565	635	707	777	847	918	988	1060
4	12.56	628	754	879	1005	1130	1256	1382	1507	1633	1758	1885
5	19.63	982	1178	1374	1571	1767	1963	2159	2356	2552	2745	2945

* To obtain push pull force for 550 Series Tandem Cylinders double the figures noted above for the 5" bore. For the 580 Triplex Series, triple the figures noted.

Rod Dia. Thread	Full Thread (NF)	Reduced Thread	Female
	CC	RR	FF
1/4"	1/4-28	1/8-27	6-32
5/16"	5/16-24	1/4-28	8-32
3/8"	3/8-24	5/16-24	10-32
1/2"	1/2-20	7/16-20	1/4-28
3/4"	3/4-16	1/2-20	3/8-24
1"	1-14	3/4-16	1/2-20

**Identify appropriate rod diameter for requested cylinder. Add the corresponding letter—CC, RR or FF—after model number to obtain desired thread style. Threads noted at left are suggested as standard. In addition to those noted, we can furnish any other threads upon request.

NOTE: To order wrench flats on rod ends, simply add WF after model number.

GUARANTEE

AIR MITE CYLINDERS or VALVES are guaranteed against defective workmanship and material for a period of 60 days from date of purchase. In event of defect, a cylinder or valve returned PREPAID will be replaced NO CHARGE, F.O.B. our factory. No products can be returned for credit after 6 months.

SPECIAL SERVICE OFFER

Natural wear as a result of constant and unlimited use of the AIR-MITE CYLINDER may give cause for parts replacement.

NOTE: No Air-Mite products may be returned without obtaining an authorized RGA number. Credit will only be issued for unused or unmarked current standard catalog items.

Restocking charge 20% on all authorized returns.