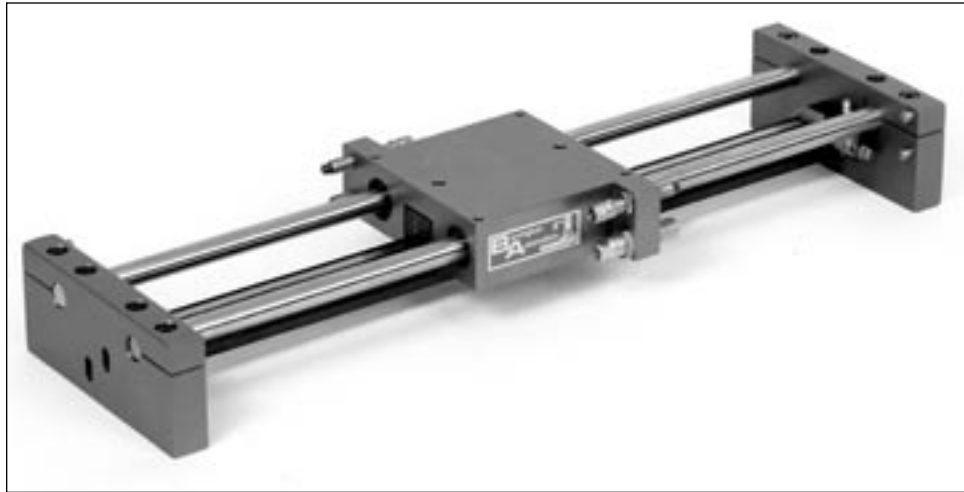
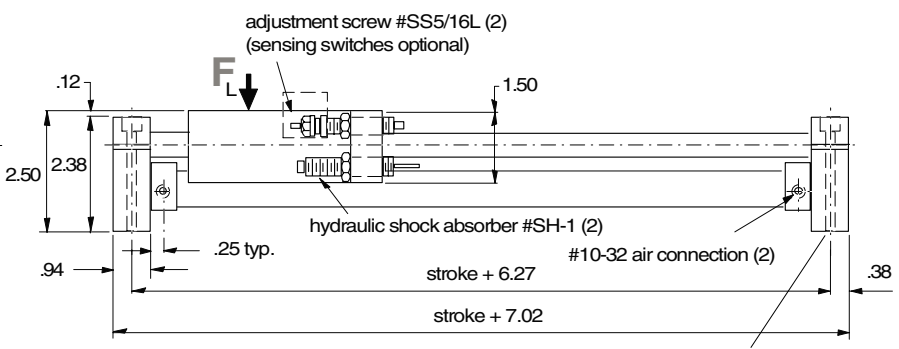
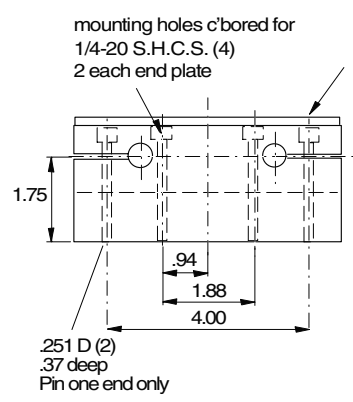
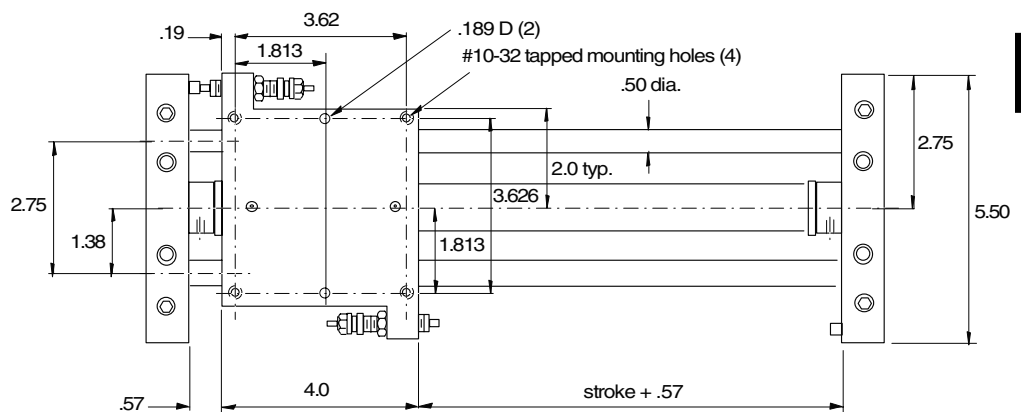


TS-2 Table Slide Mini



Optional sensing switches available. See pages 143-149



Note: Pin one end only

Order:

TS-2-(stroke)

Force at 80 psi: 22 lbs

F_L = 5 lbs

Bore = .6

Weight = 6 lbs (based on TS-2-12)

Available strokes = up to 16" in 1" increments

Technical data		Operating medium	Compressed air
-Stroke designed with built in stopscrews with fine threads		Operating pressure	60-100 psi
-The stopscrews can be used with sensing switches		Repeat accuracy	±0.0005 in
-Designed for production rates and long life		Air connection	10-32
-Seal kits and rebuilt kits available.			