

9/16" BORE BRASS MINIMATIC® CYLINDER



9PS-3/4

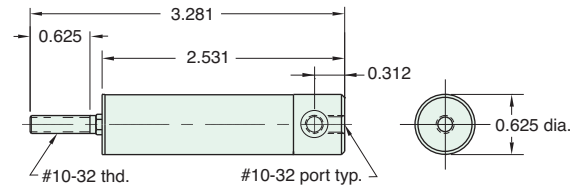
Mount: Body

Type: Single Acting
Spring Return

Available Stroke Lengths: 3/4"

Non-Rotating Shaft

Add **-N** to the end of the part number for a non-threaded rod



Rod nut included, but not shown on drawing

9BS-□

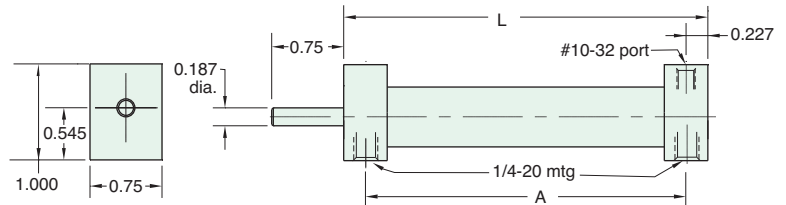
Mount: Block

Type: Single Acting
Spring Return

Stroke Length "L"	3/4"	1 1/2"	2 1/4"	3"
"A"	2.750	4.218	5.593	6.937
	2.298	3.764	5.139	6.483

To order: Add stroke length to the end of the part number

Add **-T** to the end of the part number after stroke for a #10-32 x 1/2" rod thread



9SS-□

Mount: Stud

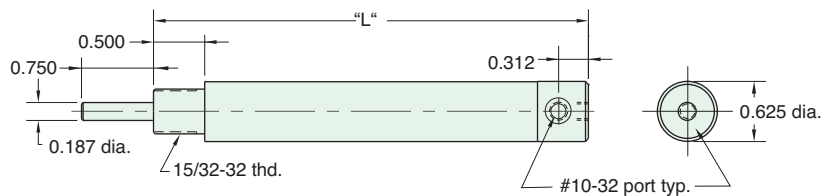
Type: Single Acting
Spring Return

Stroke Length "L"	3/4"*	1 1/2"***	2 1/4"***	3"***
	3.031	4.531	5.875	7.250

To order: Add stroke length to the end of the part number

* Provided threaded standard

** Add **-T** to the end of the part number after stroke for a #10-32 x 1/2" rod thread



Rod nut included, but not shown on drawing

Note: On 3/4" stroke rod is hexagonal stainless steel (non-rotating) and threaded #10-32 x 5/8

9CS-□

Mount: Clevis

Type: Single Acting
Spring Return

Stroke Length "L"	3/4"	1 1/2"	2 1/4"	3"
	3.343	4.703	6.062	7.421

To order: Add stroke length to the end of the part number

Add **-T** to the end of the part number after stroke for a #10-32 x 1/2" rod thread

