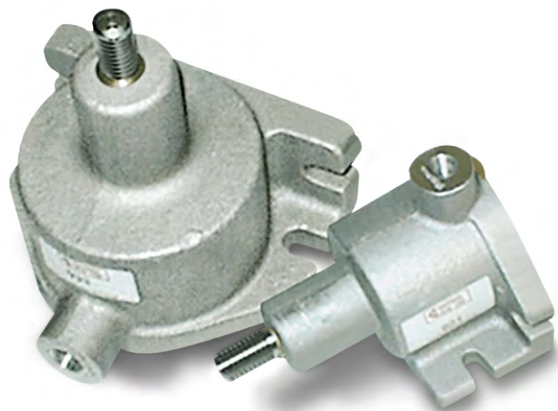


Series 900 Clamping Cylinders

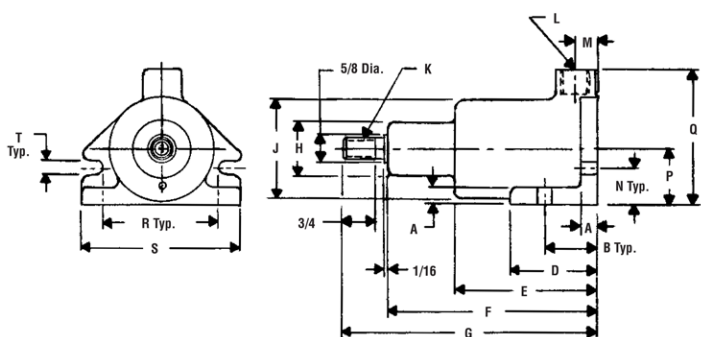


Application Information

- Single acting, spring return cylinder available in 2", 3" or 4" bore sizes in 1" and 2" stroke lengths.
- Cast aluminum body is corrosion resistant.
- Body is designed for horizontal or vertical mounting. Slotted mounting holes permit fast and easy installation or relocation.
- For air service up to 150 PSI.
- Stress proof steel chrome plated piston rod.
- Available with threaded and non-threaded piston rods.

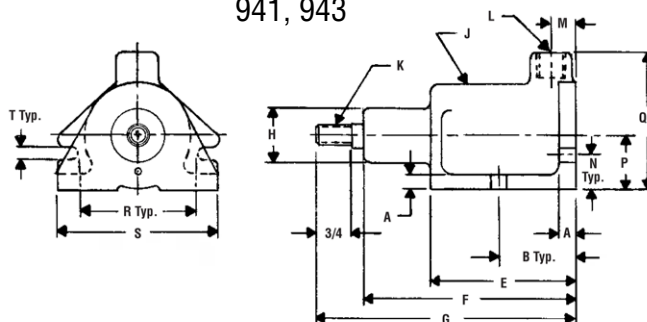
Models

921, 922, 923, 924, 931, 932, 933, 934



Models

941, 943

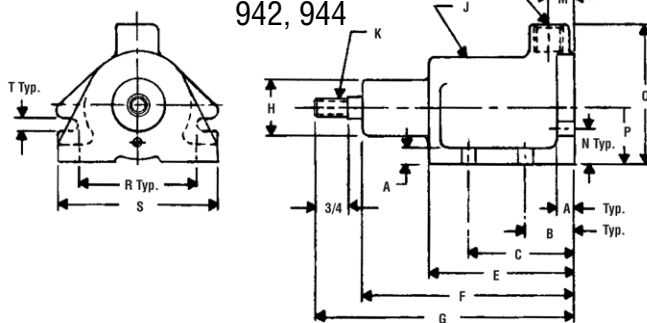


Repair Kits

Models	No.
921, 922, 923, 924	7021
931, 932, 933, 934	7023
941, 942, 943, 944	7025

Models

942, 944



Dimensions

Th'd Rod Model No.	Non-Th'd Rod Model No.	Bore Dia. In.	Stroke In.	Spring Force Lbs.	A	B	C	D	E	F	G	H Dia.	J Dia.	K Th'd.	L NPTF	M	N	P	Q	R	S	T
921	923	2	1	9-18	3/8	1-3/16	-	2	2-1/8	3-3/4	4-3/4	1-1/4	2-3/8	1/2-13	1/8-27	35/64	27/32	1-9/32	3-7/32	2-5/8	3-5/8	9/32
931	933	3	1	20-38	1/2	1-1/4	-	2-1/16	2-3/8	4-3/16	5-3/16	1-3/8	3-3/8	1/2-13	1/4-18	19/32	1-7/32	1-27/32	4-11/32	3-5/8	4-7/8	13/32
932	934	3	2	20-55	1/2	1-1/4	-	2-1/16	3-3/8	5-3/16	6-3/16	1-3/8	3-3/8	1/2-13	1/4-18	19/32	1-7/32	1-27/32	4-11/32	3-5/8	4-7/8	13/32
941	943	4	1	25-30	1/2	1-11/16	-	-	2-23/32	5-13/32	6-13/32	2	4-1/2	3/4-10	1/4-18	3/4	1-3/8	2-3/8	5-5/16	4-11/16	6	7/16
942	944	4	2	20-30	1/2	1-3/16	2-5/8	-	3-23/32	6-13/32	7-13/32	2	4-1/2	3/4-10	1/4-18	3/4	1-3/8	2-3/8	5-5/16	4-11/16	6	7/16



Air Engineering and Supply

7521 Commerce Lane NE, PO Box 32397, Fridley, MN 55432
800.332.4181 | 612.332.4181 | www.airengr.com

