



FLEXPipe

AN **80/20** BRAND





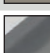






**MODULAR
PIPE & JOINT
SYSTEM**



Modular Material Handling System

Pipe & Joint Framing System

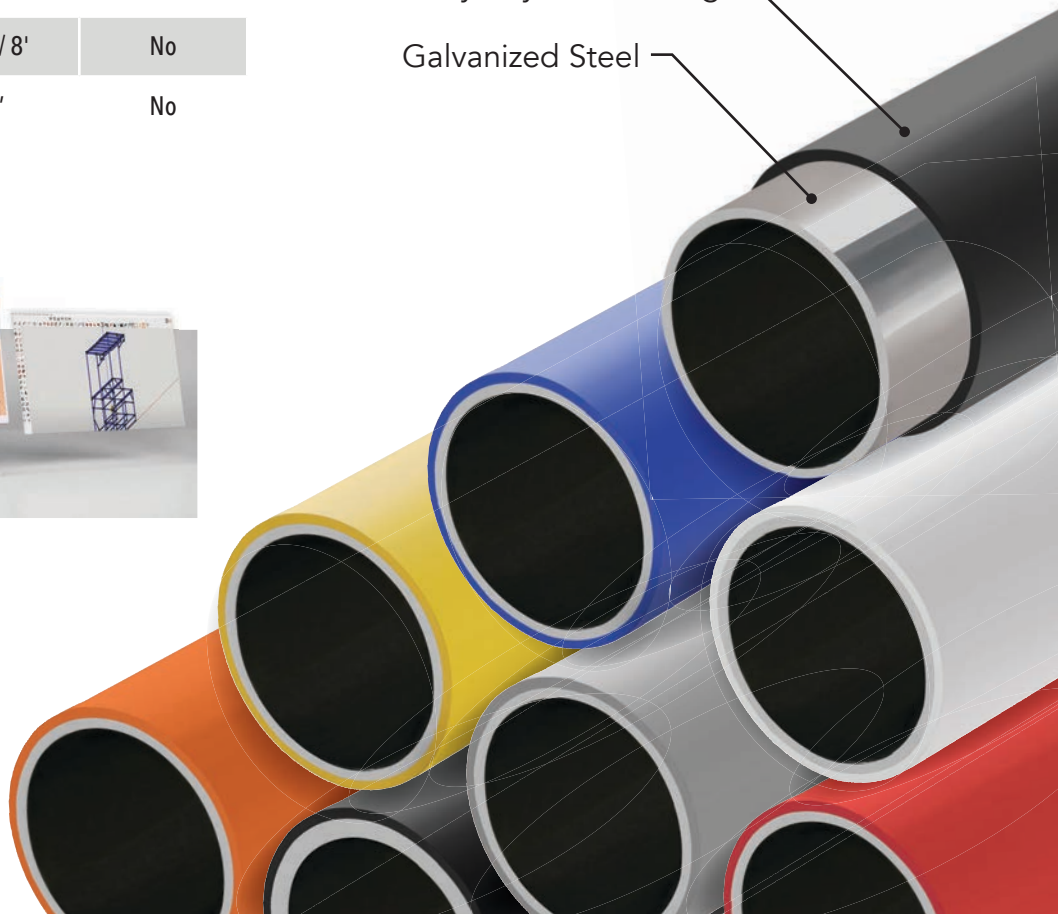
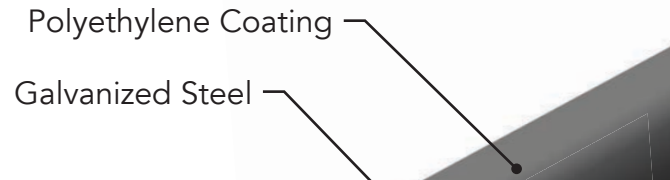
The Flexpipe modular system offers a versatile and adaptable solution for your material handling needs. Easy to assemble with simple hand tools, it allows for quick modifications and expansions. The system's low-cost and durable design makes it an ideal choice for optimizing your processes and reducing equipment expenses.

Pipe Color	Steel Thickness	Length	Electric Conductivity
 White	1mm / 2mm	8'	No
 Black	1mm / 2mm	4m / 8'	Yes
 Light Gray	1mm	8'	Yes
 Gray	1mm	8'	No
 Stainless	0.7mm	4m / 8'	Yes
 Ivory	1mm	4m / 8'	No
 Yellow	1mm	8'	No
 Orange	1mm	8'	No
 Green	1mm	4'	No
 Blue	1mm / 2mm	4m / 8'	No
 Red	1mm	8'	No

- 2mm pipe available only in 8' length
- 4 meter pipes available in U.S. Only
- Stainless has no coating

Flexpipe offers galvanized steel pipes coated with colored polyethylene and have a 1.0625" (28mm) external diameter. A variety of colors are available at 1mm thickness. Blue, white and black pipes are also available in 2mm.

All pipes come 8 feet (2,438mm) in length with options of 4 meter lengths in the U.S. Electric conductive pipe and joint options are available for those needing to meet ESD standards.



How Much Weight Can It Support?

When designing a modular structure, it's crucial to keep specific loading capacity guidelines in mind to ensure it will support its intended load. See below how much weight Flexpipe can carry on a single load point.



PIPE SPAN	0.7 MM stainless pipe	1 MM regular steel pipe	2 MM thick steel pipe
12"	444 lb	867 lb	1474 lb
24"	282 lb	449 lb	831 lb
36"	198 lb	324 lb	571 lb
48"	155 lb	246 lb	561 lb
60"	137 lb	220 lb	402 lb





Custom Structures to Fit Your Needs

Ideal for Flow Racks, Carts, Workstations and More

With a modular system, the possibilities are endless. Each component can be used in multiple ways to solve any number of problems. Flexpipe structures are ideal for creating tailored and ergonomic solutions to fit your needs.



Workstation



Display



Mobile Cart



Material Handling Cart



Storage Rack

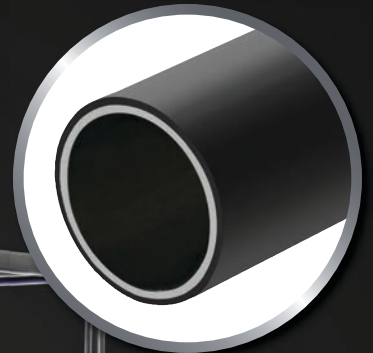


Flow Rack

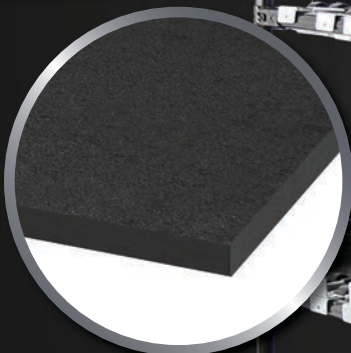
All the Pieces For Your Solution



Joints



**Steel
Pipes**



Panels



**Roller
Track**



Casters



**Drawer
Slides**



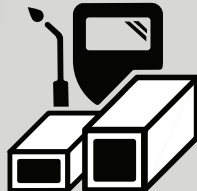




How Does It Stack Up?

Weigh the Cost vs Value of Popular Material Options

Cost is at the forefront of any project and maximizing your money while getting a reliable product is always a challenge. Flexpipe gives you the quality of a lightweight and durable framing system without the expense incurred with popular materials like wood, steel and others.

		
Flexpipe	Wood	Steel
<p data-bbox="316 961 373 1018">\$</p> <ul style="list-style-type: none"> <li data-bbox="175 1066 381 1113">✓ Strength <li data-bbox="175 1140 381 1186">✓ Modular <li data-bbox="175 1213 462 1260">✓ Customizable <li data-bbox="175 1287 438 1333">✓ Lightweight <li data-bbox="175 1360 479 1407">✓ Easy Assembly <li data-bbox="175 1434 365 1480">✓ Quality <li data-bbox="175 1507 527 1554">✓ Low Maintenance 	<p data-bbox="747 961 868 1018">\$ \$</p> <ul style="list-style-type: none"> <li data-bbox="641 1066 847 1113">× Strength <li data-bbox="641 1140 847 1186">× Modular <li data-bbox="641 1213 925 1260">✓ Customizable <li data-bbox="641 1287 901 1333">× Lightweight <li data-bbox="641 1360 941 1407">✓ Easy Assembly <li data-bbox="641 1434 828 1480">× Quality <li data-bbox="641 1507 990 1554">× Low Maintenance 	<p data-bbox="1177 961 1380 1018">\$ \$ \$</p> <ul style="list-style-type: none"> <li data-bbox="1104 1066 1310 1113">✓ Strength <li data-bbox="1104 1140 1310 1186">× Modular <li data-bbox="1104 1213 1388 1260">✓ Customizable <li data-bbox="1104 1287 1372 1333">× Lightweight <li data-bbox="1104 1360 1404 1407">× Easy Assembly <li data-bbox="1104 1434 1291 1480">✓ Quality <li data-bbox="1104 1507 1453 1554">× Low Maintenance

Use Flexpipe & 80/20 Together

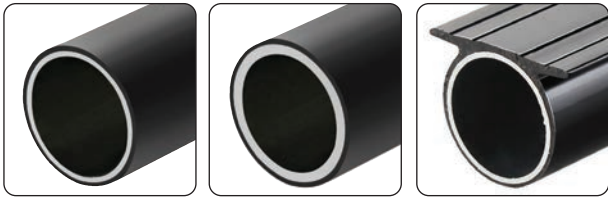
With Flexpipe you don't have to build alone. Gain the benefits of incorporating 80/20 aluminum T-slot profiles. A simple joint connects pipes to the T-slot to introduce elements like flow racks and shelves.

Add large, heavy duty profiles with 80/20 or cut weight without compromising strength by introducing lightweight pipes from Flexpipe.





Steel Pipe (See page 2 for color options) 1.0625" (28mm) diameter



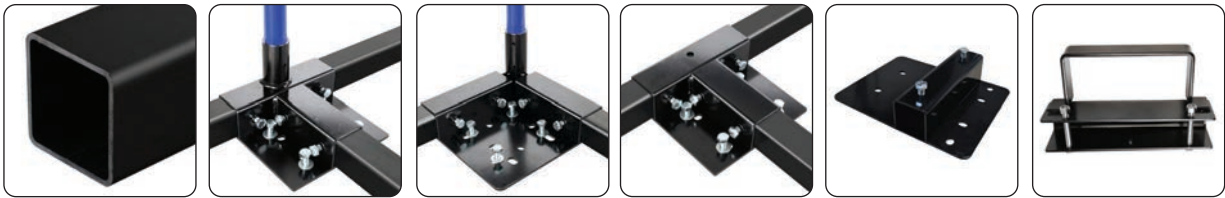
1mm Thick Steel Pipe

2mm Thick Steel Pipe

Flat Steel Pipe

If you have additional questions, please contact Air Engineering and Supply. www.airengr.com

Steel Square Tube 1.575" x 1.575" (40mm x 40mm)



Square Steel Tube

Center Plate with Pipe

Corner Plate with Pipe

Center Plate

Tow Bar Assembly Plate

Fork Guide Plate

Roller Tracks



Narrow Roller Track

Flanged Roller Track

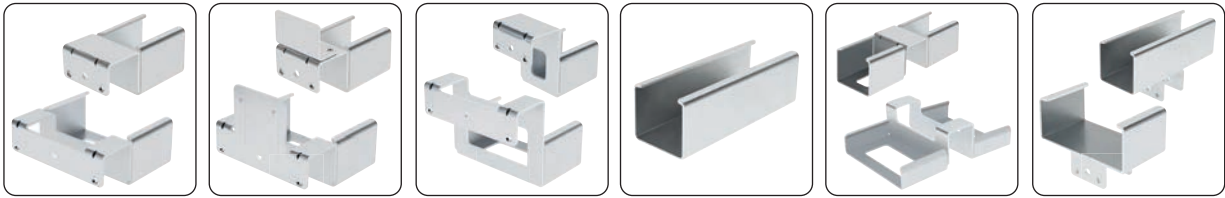
Wide Roller Track

Straight Roller Guide

Lateral Roller Guide

Center Roller Guide

Roller Decelerator



Track Mount Start

Track Mount Tab Stop

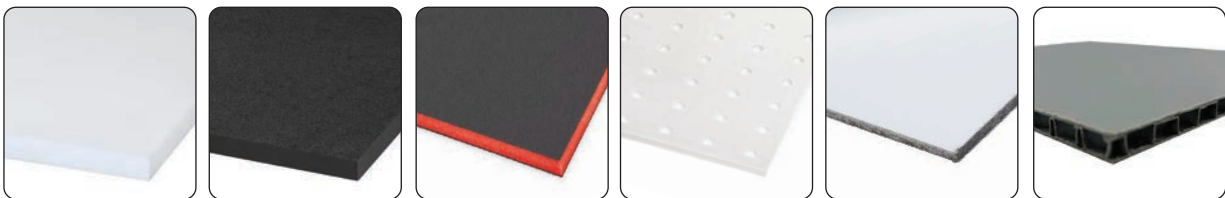
Track Mount Drop Stop

Track Connector

Track Union

Track Mount Stabilizer

Panels



1/4" & 1/2" White HDPE

1/4" & 1/2" Black HDPE

Kaizen Foam

White HDPE Pegboard

White Aluminum Composite

Rigid Honeycomb Board

Joints Chrome (ESD) Available for Select Joints



Tee Joint



Corner Joint



3 Way Cross Joint



4 Way Cross joint



5 Way Cross Joint



Pivot Tee Joint



Extended Pivot Tee Joint



Intersection Joint



Intersection Open Joint



Side Anchor Joint



Flat Anchor Joint



Flat Clamp Hinge



Tee Hinge Joint



Parallel Joint



Double Pivot Joint



Flat Clamp Joint



45 Degree Fix Angle Joint



Flat Pipe Joint



Double Tee Joint



Double Pipe Single Hinge



Cross Hinge Joint



Round Angle Joint



Pipe Mount Start



Pipe Mount Drop Stop



Hinge Bracket



Aluminum Hinge Bracket

Casters (ESD) Available for Select Casters



3" & 4" Stem Swivel Caster Brake



3" & 4" Stem Rigid Caster



3" Stem Swivel Caster



4" Swivel Plate Caster Brake



4" Rigid Plate Caster



6" Swivel Plate Caster



6" Rigid Plate Caster



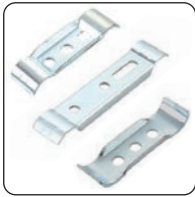
6" Swivel HD Plate Caster



6" Rigid HD Plate Caster



Foot Brake for 4" & 6" Casters



Brackets for Casters



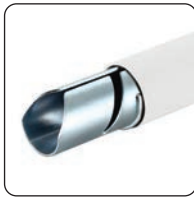
Caster Plates



Accessories



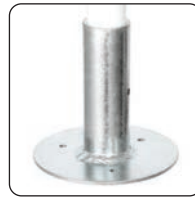
End Cap



Pipe Connector



Pipe Connector for Stainless



Stanchion Mount



Stanchion Mount Small



Adjustable Inner Foot



Adjustable Outer Foot



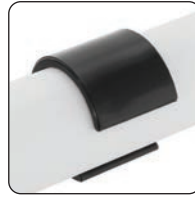
Rubber Foot



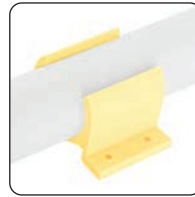
Adjustable Non-Slip Outer Foot



Stacking Cap



Shim for Surface Leveling



Surface Clip



Pipe Clamp Single Mount



Pipe Clamp Double Mount



Separator



Corner Bracket



Embed Bracket Support



Embed Pipe Support



Hanger End Cap



Open Sleeve Hanger



Corner Stacking Support



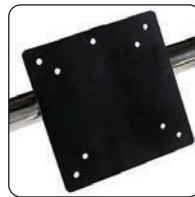
Swivel Stopper



Pipe Rest



C Pipe Rest



Monitor Mount Plate



Quick Release Latch



Label Holders



Corner Bumper



Front Hook



Roller Double Hook



Small Bin Hanger



Tool Holder



Slides Bracket



Drawer Slides



Lift Kit Systems



Workstation Light



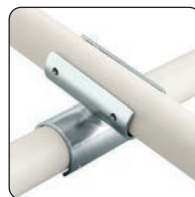
Male/Female Leg Wrapper Tow Bar



Male/Female Spring Loaded Tow Bar



Wire Duct



Swivel Cross Union



Protection Tape



Foam Pipe Protector

Fasteners

Chrome Available for Joint Hardware



Joint Bolt



Joint Nut



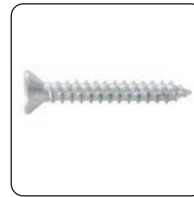
Bolt Threadlock



Bolt Quick Release



Self Drilling Screws #8



Counter Screws #8



Square Screws #8



Steel Pipe Bushing



Washer for 6" Casters



Lock Nut for Casters



Bolt for 4" & 6" Casters



Machine Screw



10-32 Lock Nut

Tools



Pipe Cutter



2x blades Pipe Cutter



Hand Deburring Tool



5x blades Deburring Tool



Inner-Outer Pipe Reamer



Bit #2 Robertson Head Screw



5x Hex Drill Bits 5mm



Stem Caster Wrench



5mm Allen Wrench



Foam Spinner



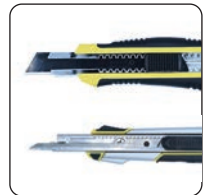
Foam Scraper



Foam Knife Sled



Markers



Utility Knives / Blades

Offered Services



Cutting Service
Don't have the tools to cut your product? We can do it.



Assembly Support
Save time with expert builders. Have it ready at your door.



Design Assistance
Meet your specific needs with help from Flexpipe experts.



Bulk Components
Prepare for the future and have inventory on hand.



Starter Kits
Learn Flexpipe with parts and plans for multiple structures.



Order Online
Quickly and easily order products and get them fast.

If you have additional
questions, please contact
Air Engineering and Supply.
www.airengr.com



Air Engineering and Supply

www.airengr.com

Phone: 612.332.4181

Toll Free: 1.800.332.4181